

Anti-HO-2 antibody ab90515

★★★★☆ [3 Abreviews](#) [5 References](#) [画像数 2](#)

製品の概要

製品名	Anti-HO-2 antibody
製品の詳細	Rabbit polyclonal to HO-2
由来種	Rabbit
アプリケーション	適用あり: WB, ICC/IF, IHC-P, IP, ELISA
種交差性	交差種: Mouse, Rat, Hamster, Dog, Human, Pig, Monkey
免疫原	Synthetic peptide corresponding to Human HO-2 (N terminal).
特記事項	<p>The Life Science industry has been in the grips of a reproducibility crisis for a number of years. Abcam is leading the way in addressing this with our range of recombinant monoclonal antibodies and knockout edited cell lines for gold-standard validation. Please check that this product meets your needs before purchasing.</p> <p>If you have any questions, special requirements or concerns, please send us an inquiry and/or contact our Support team ahead of purchase. Recommended alternatives for this product can be found below, along with publications, customer reviews and Q&As</p>

製品の特性

製品の状態	Liquid
保存方法	Shipped at 4°C. Upon delivery aliquot and store at -20°C. Avoid repeated freeze / thaw cycles.
バッファー	Preservative: 0.09% Sodium azide Constituents: PBS, 50% Glycerol (glycerin, glycerine)
精製度	Protein A purified
ポリ/モノ	ポリクローナル
アイソタイプ	IgG

アプリケーション

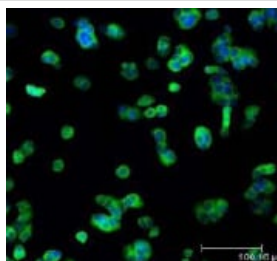
The Abpromise guarantee **Abpromise保証は、** 次のテスト済みアプリケーションにおけるab90515の使用に適用されます
アプリケーションノートには、推奨の開始希釈率がありますが、適切な希釈率につきましてはご検討ください。

アプリケーション	Abreviews	特記事項
WB	★★★★★ (3)	1/1000. Predicted molecular weight: 36 kDa.
ICC/IF		Use at an assay dependent concentration.
IHC-P		Use at an assay dependent concentration.
IP		Use at an assay dependent concentration.
ELISA		Use at an assay dependent concentration.

ターゲット情報

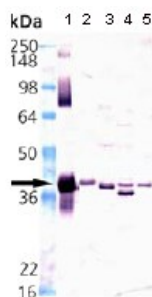
機能	Heme oxygenase cleaves the heme ring at the alpha methene bridge to form biliverdin. Biliverdin is subsequently converted to bilirubin by biliverdin reductase. Under physiological conditions, the activity of heme oxygenase is highest in the spleen, where senescent erythrocytes are sequestered and destroyed. Heme oxygenase 2 could be implicated in the production of carbon monoxide in brain where it could act as a neurotransmitter.
配列類似性	Belongs to the heme oxygenase family. Contains 2 HRM (heme regulatory motif) repeats.
細胞内局在	Microsome. Endoplasmic reticulum.

画像



ab90515 staining HO-2 in MCF7 cells by Immunofluorescence (green). Nuclei are stained in blue pseudocolor using DRAQ5.

Immunocytochemistry/ Immunofluorescence - Anti-HO-2 antibody (ab90515)



All lanes : Anti-HO-2 antibody (ab90515) at 1/1000 dilution

Lane 1 : HO-2 Recombinant Human Protein

Lane 2 : Human Liver Microsome Extract

Lane 3 : Mouse Liver Microsome Extract

Lane 4 : Rat Liver Microsome Extract

Lane 5 : Dog Liver Microsome Extract

Western blot - Anti-HO-2 antibody (ab90515)

Predicted band size: 36 kDa

Please note: All products are "FOR RESEARCH USE ONLY. NOT FOR USE IN DIAGNOSTIC PROCEDURES"

Our Abpromise to you: Quality guaranteed and expert technical support

- Replacement or refund for products not performing as stated on the datasheet
- Valid for 12 months from date of delivery
- Response to your inquiry within 24 hours
- We provide support in Chinese, English, French, German, Japanese and Spanish
- Extensive multi-media technical resources to help you
- We investigate all quality concerns to ensure our products perform to the highest standards

If the product does not perform as described on this datasheet, we will offer a refund or replacement. For full details of the Abpromise, please visit <https://www.abcam.co.jp/abpromise> or contact our technical team.

Terms and conditions

- Guarantee only valid for products bought direct from Abcam or one of our authorized distributors