


Anti-HMGA1a / HMGA1b antibody ab4078

★★★★★ **2 Abreviews** **28 References** 画像数 3

製品の概要

製品名	Anti-HMGA1a / HMGA1b antibody
製品の詳細	Rabbit polyclonal to HMGA1a / HMGA1b
由来種	Rabbit
特異性	This antibody detects, by Western blot on human GFP fusion proteins in cell lysate, both HMGA1a and the splice variant HMGA1b, but does not detect HMGA2 (see review and Western blot picture). The antibody has not yet been successfully used to detect endogenous protein.
アプリケーション	適用あり: WB, IHC-P, ChIP, ICC/IF
種交差性	交差種: Mouse, Human, Zebrafish 交差が予測される動物種: Rat, Chicken, Neurospora crassa, Chinese hamster 
免疫原	Synthetic peptide. This information is proprietary to Abcam and/or its suppliers.
ポジティブ・コントロール	This antibody gave a positive result in human placenta FFPE tissue sections
特記事項	<p>The Life Science industry has been in the grips of a reproducibility crisis for a number of years. Abcam is leading the way in addressing this with our range of recombinant monoclonal antibodies and knockout edited cell lines for gold-standard validation. Please check that this product meets your needs before purchasing.</p> <p>If you have any questions, special requirements or concerns, please send us an inquiry and/or contact our Support team ahead of purchase. Recommended alternatives for this product can be found below, along with publications, customer reviews and Q&As</p>

製品の特性

製品の状態	Liquid
保存方法	Shipped at 4°C. Store at +4°C short term (1-2 weeks). Upon delivery aliquot. Store at -20°C or -80°C. Avoid freeze / thaw cycle.
バッファー	pH: 7.40 Preservative: 0.02% Sodium azide Constituent: PBS
	Batches of this product that have a concentration < 1mg/ml may have BSA added as a stabilising agent. If you would like information about the formulation of a specific lot, please contact our scientific support team who will be happy to help.

精製度	Immunogen affinity purified
ポリ/モノ	ポリクローナル
アイソタイプ	IgG

アプリケーション

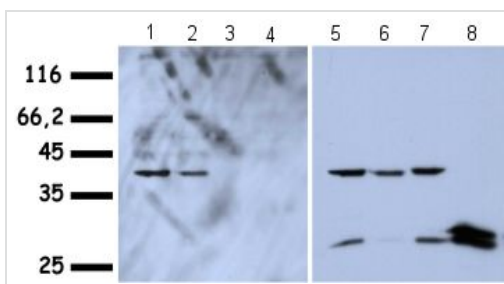
The Abpromise guarantee **Abpromise保証は、次のテスト済みアプリケーションにおけるab4078の使用に適用されます**
 アプリケーションノートには、推奨の開始希釈率がありますが、適切な希釈率につきましてはご検討ください。

アプリケーション	Abreviews	特記事項
WB	★★★★★ (1)	1/1000. Detects a band of approximately 11 kDa (predicted molecular weight: 11.5 kDa).
IHC-P		Use at an assay dependent concentration.
ChIP	★★★★★ (1)	Use at an assay dependent concentration. See Abreview submitted on 15 December 2009.
ICC/IF		1/250 - 1/500. Although this antibody gives a specific signal in Immunofluorescence, we have had suggestions that strong background signals are seen. See review by Robert Hock and IF picture below.

ターゲット情報

機能	HMG-I/Y bind preferentially to the minor groove of A+T rich regions in double stranded DNA. It is suggested that these proteins could function in nucleosome phasing and in the 3'-end processing of mRNA transcripts. They are also involved in the transcription regulation of genes containing, or in close proximity to A+T-rich regions.
関連疾患	Note=A chromosomal aberration involving HMGA1 is found in pulmonary chondroid hamartoma. Translocation t(6;14)(p21;q23-24) with RAD51L1.
配列類似性	Belongs to the HMGA family. Contains 3 A.T hook DNA-binding domains.
翻訳後修飾	Constitutively phosphorylated on two or three sites. Phosphorylated upon DNA damage, probably by ATM or ATR. Hyperphosphorylated at early stages of apoptosis, followed by dephosphorylation and methylation, which coincides with chromatin condensation. Isoform HMG-Y can be phosphorylated by HIPK2. HMG-Y is not methylated. Methylation at Arg-58 is mutually exclusive with methylation at Arg-60.
細胞内局在	Nucleus. Chromosome.

画像



Western blot - Anti-HMGA1a / HMGA1b antibody (ab4078)

This image is courtesy of Mbnika Harrer

Lanes 1-4 : Anti-HMGA1a / HMGA1b antibody (ab4078) at 1/1000 dilution

Lanes 5-8 : Anti-GFP

Lane 1 : Whole cell lysate from HepG2 cells transfected with plasmids coding for hHMGA1a GFP fusion proteins.

Lanes 2 & 6 : Whole cell lysate from HepG2 cells transfected with plasmids coding for hHMGA1b-GFP fusion proteins

Lanes 3 & 7 : Whole cell lysate from HepG2 cells transfected with plasmids coding for hHMGA2-GFP fusion proteins

Lane 4 : Whole cell lysate from HepG2 cells transfected with plasmids coding for NLS-GFP fusion proteins

Lane 5 : Whole cell lysate from HepG2 cells transfected with plasmids coding for hHMGA1a-GFP fusion proteins

Lane 8 : Whole cell lysate from HepG2 cells transfected with plasmids coding for NLS-GFP fusion proteins

Secondary

All lanes : Anti-rabbit HRP at 1/10000 dilution

Performed under reducing conditions.

Predicted band size: 11.5 kDa

Western blot using ab4078.

Whole cell lysate from HepG2 cells transfected with plasmids coding for hHMGA1a-, hHMGA1b-, hHMGA2- or NLS- (nuclear localisation signal) GFP fusion proteins.

ab4078 was diluted 1/1000 in 5% milk/TBS and incubated for 1 hr at room temperature. Secondary HRP anti-rabbit antibody was diluted 1/10000 in 5% milk/TBS and incubated for 1 hr at room temperature.

Lane 1: hHMGA1a-GFP (ab4078)

Lane 2: hHMGA1b-GFP (ab4078)

Lane 3: hHMGA2-GFP (ab4078)

Lane 4: NLS-GFP (ab4078)

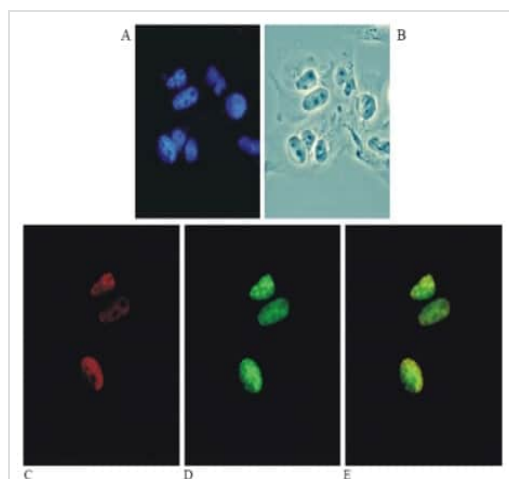
Lane 5: hHMGA1a-GFP (anti-GFP)

Lane 6: hHMGA1b-GFP (anti-GFP)

Lane 7: hHMGA2-GFP (anti-GFP)

Lane 8: NLS-GFP (anti-GFP)

The detected size is that expected for the fusion of an 11kD and 26kD protein (GFP).



Immunocytochemistry/ Immunofluorescence - Anti-HMGA1a / HMGA1b antibody (ab4078)

This image is courtesy of Robert Hock

Immunofluorescence on MCF-7 cells transfected with human HMGA1a-GFP using ab4078.

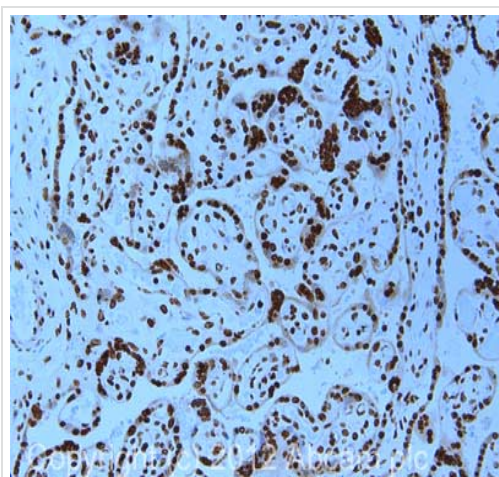
A: Hoechst stain

B: Phasecontrast

C: TexasRed HMG-I/HMG-Y (ab4078)

D: HMGA1a-GFP

E: Merge



Immunohistochemistry (Formalin/PFA-fixed paraffin-embedded sections) - Anti-HMGA1a / HMGA1b antibody (ab4078)

IHC image of ab4078 staining in human placenta formalin fixed paraffin embedded tissue section, performed on a Leica Bond™ system using the standard protocol F. The section was pre-treated using heat mediated antigen retrieval with sodium citrate buffer (pH6, epitope retrieval solution 1) for 20 mins. The section was then incubated with ab4078, 1µg/ml, for 15 mins at room temperature and detected using an HRP conjugated compact polymer system. DAB was used as the chromogen. The section was then counterstained with haematoxylin and mounted with DPX.

For other IHC staining systems (automated and non-automated) customers should optimize variable parameters such as antigen retrieval conditions, primary antibody concentration and antibody incubation times.

Please note: All products are "FOR RESEARCH USE ONLY. NOT FOR USE IN DIAGNOSTIC PROCEDURES"

Our Abpromise to you: Quality guaranteed and expert technical support

- Replacement or refund for products not performing as stated on the datasheet
- Valid for 12 months from date of delivery
- Response to your inquiry within 24 hours
- We provide support in Chinese, English, French, German, Japanese and Spanish
- Extensive multi-media technical resources to help you

- We investigate all quality concerns to ensure our products perform to the highest standards

If the product does not perform as described on this datasheet, we will offer a refund or replacement. For full details of the Abpromise, please visit <https://www.abcam.co.jp/abpromise> or contact our technical team.

Terms and conditions

- Guarantee only valid for products bought direct from Abcam or one of our authorized distributors