

Anti-HLA E antibody [MEM-E/07] ab11820

★★★★★ [3 Abreviews](#) [7 References](#) [画像数 2](#)

製品の概要

| | |
|--------------|-----------------------------------------------------------------------------------------------------------------------------------------------------------------------------------------------------------------------------------------------------------------------------------------------------------------------------------------------------------------------------------------------------------------------------------------------------------------------------------------------------------------------------------------------------------------------------------------------------------------|
| 製品名 | Anti-HLA E antibody [MEM-E/07] |
| 製品の詳細 | Mouse monoclonal [MEM-E/07] to HLA E |
| 由来種 | Mouse |
| 特異性 | The antibody recognized native surface-expressed HLA E, but not denaturated heavy chain of HLA E. The published results revealed that the antibody cross-reacts with some classical MHC Class I molecules: HLA B7 (strongly), HLA B8 (moderately), HLA B27, HLA-B44 (weakly). |
| アプリケーション | 適用あり: Flow Cyt, IHC-P |
| 種交差性 | 交差種: Human |
| 免疫原 | Recombinant full length protein corresponding to HLA E. The epitope is extracellular. The antibody reacts only with native epitope, not denatured. Database link: P13747 |
| ポジティブ・コントロール | IHC-P: Human spleen tissue. |
| 特記事項 | <p>The Life Science industry has been in the grips of a reproducibility crisis for a number of years. Abcam is leading the way in addressing this with our range of recombinant monoclonal antibodies and knockout edited cell lines for gold-standard validation. Please check that this product meets your needs before purchasing.</p> <p>If you have any questions, special requirements or concerns, please send us an inquiry and/or contact our Support team ahead of purchase. Recommended alternatives for this product can be found below, along with publications, customer reviews and Q&As</p> |

製品の特性

| | |
|----------|---------------------------------------------------------------------------------------|
| 製品の状態 | Liquid |
| 保存方法 | Shipped at 4°C. Upon delivery aliquot and store at -20°C. Avoid freeze / thaw cycles. |
| バッファー | pH: 7.40 Preservative: 0.097% Sodium azide Constituent: PBS |
| 精製度 | Protein A purified |
| 特記事項(精製) | Purified from hybridoma culture supernatant by protein A-affinity chromatography. |
| ポリ/モノ | モノクローナル |

クローン名 MEM-E/07
アイソタイプ IgG1

アプリケーション

The Abpromise guarantee **Abpromise保証は、次のテスト済みアプリケーションにおけるab11820の使用に適用されず**
アプリケーションノートには、推奨の開始希釈率がありますが、適切な希釈率につきましてはご検討ください。

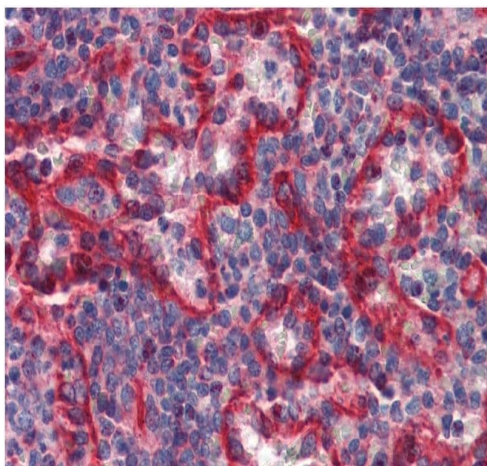
| アプリケーション | Abreviews | 特記事項 |
|----------|-----------|-------------------------------------|
| Flow Cyt | ★★★★★ (1) | Use a concentration of 1 - 4 µg/ml. |
| IHC-P | | Use a concentration of 10 µg/ml. |

ターゲット情報

関連性 HLA E belongs to the HLA class I heavy chain paralogues. This class I molecule is a heterodimer consisting of a heavy chain and a light chain (beta-2 microglobulin). The heavy chain is anchored in the membrane. HLA E binds a restricted subset of peptides derived from the leader peptides of other class I molecules.

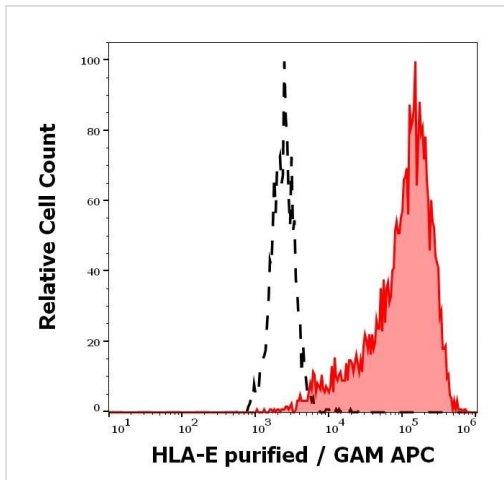
細胞内局在 Membrane; Single-pass type I membrane protein

画像



Immunohistochemistry paraffin embedded sections staining of human spleen tissue using ab11820.

Immunohistochemistry (Formalin/PFA-fixed paraffin-embedded sections) - Anti-HLA E antibody [MEM-E/07] (ab11820)



Flow cytometry analysis showing separation of HLA-E transfected LCL cells stained using ab11820 (concentration in sample 2 µg/ml, red-filled) from HLA-E transfected LCL cells stained using mouse IgG1 isotype control purified antibody (concentration in sample 2 µg/ml, same as HLA-E purified antibody concentration, black-dashed).

Flow Cytometry - Anti-HLA E antibody [MEM-E/07]
(ab11820)

Please note: All products are "FOR RESEARCH USE ONLY. NOT FOR USE IN DIAGNOSTIC PROCEDURES"

Our Abpromise to you: Quality guaranteed and expert technical support

- Replacement or refund for products not performing as stated on the datasheet
- Valid for 12 months from date of delivery
- Response to your inquiry within 24 hours
- We provide support in Chinese, English, French, German, Japanese and Spanish
- Extensive multi-media technical resources to help you
- We investigate all quality concerns to ensure our products perform to the highest standards

If the product does not perform as described on this datasheet, we will offer a refund or replacement. For full details of the Abpromise, please visit <https://www.abcam.co.jp/abpromise> or contact our technical team.

Terms and conditions

- Guarantee only valid for products bought direct from Abcam or one of our authorized distributors