

### Anti-HLA Class I antibody [YTH862.2] ab33252

★★★★★ **3 Abreviews** [画像数 1](#)

#### 製品の概要

製品名	Anti-HLA Class I antibody [YTH862.2]
製品の詳細	Rat monoclonal [YTH862.2] to HLA Class I
由来種	Rat
特異性	ab33252 recognises a monomorphic determinant on the human HLA Class I heavy chain. We have data to indicate that this antibody may not cross react with Mouse. However, this has not been conclusively tested and expression levels may vary in certain cell lines/tissues.
アプリケーション	<b>適用あり:</b> Flow Cyt
種交差性	<b>交差種:</b> Human
免疫原	Tissue, cells or virus corresponding to Human HLA Class I. PHA activated human peripheral blood lymphocytes.
エピトープ	ab33252 reacts with an epitope located in the alpha1 domain of HLA class I molecules.
ポジティブ・コントロール	Human peripheral blood lymphocytes
特記事項	<p>Fusion Partners: Spleen cells from immunised DA rats were fused with cells of the rat Y3 myeloma cell line.</p> <p>The Life Science industry has been in the grips of a reproducibility crisis for a number of years. Abcam is leading the way in addressing this with our range of recombinant monoclonal antibodies and knockout edited cell lines for gold-standard validation. Please check that this product meets your needs before purchasing.</p> <p>If you have any questions, special requirements or concerns, please send us an inquiry and/or contact our Support team ahead of purchase. Recommended alternatives for this product can be found below, along with publications, customer reviews and Q&amp;As</p>

#### 製品の特性

製品の状態	Liquid
保存方法	Shipped at 4°C. Store at +4°C short term (1-2 weeks). Upon delivery aliquot. Store at -20°C or -80°C. Avoid freeze / thaw cycle.
バッファー	<p>pH: 7.40</p> <p>Preservative: 0.09% Sodium azide</p> <p>Constituent: PBS</p>
精製度	Protein G purified

特記事項(精製)	ab33252 was purified from tissue culture supernatant.
ポリ/モノ	モノクローナル
クローン名	YTH862.2
アイソタイプ	IgG2b

## アプリケーション

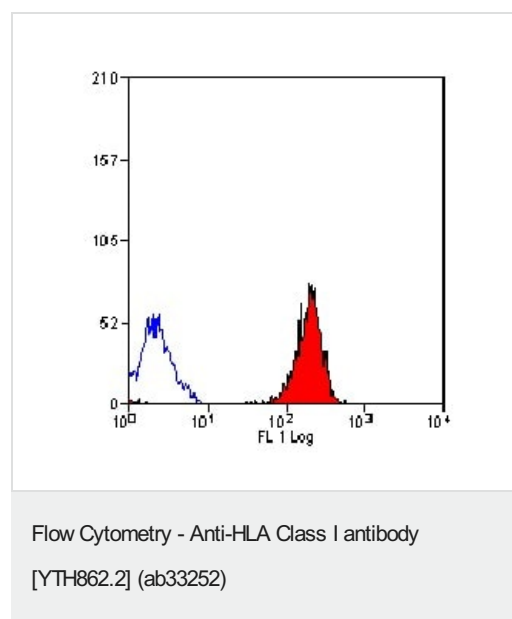
**The Abpromise guarantee**      **Abpromise保証は、**次のテスト済みアプリケーションにおけるab33252の使用に適用されます  
アプリケーションノートには、推奨の開始希釈率がありますが、適切な希釈率につきましてはご検討ください。

アプリケーション	Abreviews	特記事項
Flow Cyt		1/50 - 1/100. Use 10µl of the suggested working dilution to label 10 <sup>6</sup> cells in 100µl.

## ターゲット情報

関連性	HLA Class I is involved in the presentation of foreign antigens to the immune system.
細胞内局在	Plasma membrane

## 画像



FACS analysis of HLA class I expressing cells in human peripheral blood lymphocytes using ab33252.

**Please note:** All products are "FOR RESEARCH USE ONLY. NOT FOR USE IN DIAGNOSTIC PROCEDURES"

## **Our Abpromise to you: Quality guaranteed and expert technical support**

---

- Replacement or refund for products not performing as stated on the datasheet
- Valid for 12 months from date of delivery
- Response to your inquiry within 24 hours
  
- We provide support in Chinese, English, French, German, Japanese and Spanish
- Extensive multi-media technical resources to help you
- We investigate all quality concerns to ensure our products perform to the highest standards

If the product does not perform as described on this datasheet, we will offer a refund or replacement. For full details of the Abpromise, please visit <https://www.abcam.co.jp/abpromise> or contact our technical team.

## **Terms and conditions**

---

- Guarantee only valid for products bought direct from Abcam or one of our authorized distributors