

Anti-HIVEP2 antibody [2418C2a] ab70599

1 References [画像数 1](#)

製品の概要

製品名	Anti-HIVEP2 antibody [2418C2a]
製品の詳細	Mouse monoclonal [2418C2a] to HIVEP2
由来種	Mouse
アプリケーション	適用あり: WB
種交差性	交差種: Recombinant fragment
免疫原	Recombinant fragment of human HIVEP2 from near the C terminus.
ポジティブ・コントロール	Recombinant human HIVEP2.
特記事項	<p>The Life Science industry has been in the grips of a reproducibility crisis for a number of years. Abcam is leading the way in addressing this with our range of recombinant monoclonal antibodies and knockout edited cell lines for gold-standard validation. Please check that this product meets your needs before purchasing.</p> <p>If you have any questions, special requirements or concerns, please send us an inquiry and/or contact our Support team ahead of purchase. Recommended alternatives for this product can be found below, along with publications, customer reviews and Q&As</p>

製品の特性

製品の状態	Liquid
保存方法	Shipped at 4°C. Upon delivery aliquot and store at -20°C. Avoid freeze / thaw cycles.
バッファー	<p>pH: 7.40</p> <p>Preservative: 0.05% Sodium azide</p> <p>Constituents: 0.1136% Dibasic monohydrogen sodium phosphate, 1% BSA, 0.03% Potassium phosphate, 0.812% Sodium chloride, 0.1312% Sodium phosphate, 0.0225% Potassium chloride, 0.0204% Monobasic dihydrogen potassium phosphate</p>
精製度	Protein G purified
特記事項 (精製)	ab70599 was purified using protein G column chromatography from culture supernatant of hybridoma cultured in a medium containing bovine IgG-depleted (approximately 95%) fetal bovine serum and filtered through a 0.22µm membrane.
ポリ/モノ	モノクローナル
クローン名	2418C2a

アプリケーション

The Abpromise guarantee

Abpromise保証は、次のテスト済みアプリケーションにおけるab70599の使用に適用されます

アプリケーションノートには、推奨の開始希釈率がありますが、適切な希釈率につきましてはご検討ください。

アプリケーション	Abreviews	特記事項
WB		

追加情報

Dot: Use at an assay dependent dilution.

WB: Use at an assay dependent dilution. Detects bands of approximately 35 and 39 kDa (predicted molecular weight: 269 kDa).

Not yet tested in other applications.

Optimal dilutions/concentrations should be determined by the end user.

ターゲット情報

機能

This protein specifically binds to the DNA sequence 5'-GGGACTTTCC-3' which is found in the enhancer elements of numerous viral promoters such as those of SV40, CMV, or HIV1. In addition, related sequences are found in the enhancer elements of a number of cellular promoters, including those of the class I MHC, interleukin-2 receptor, somatostatin receptor II, and interferon-beta genes. It may act in T-cell activation.

組織特異性

Expressed in brain and skeletal muscle.

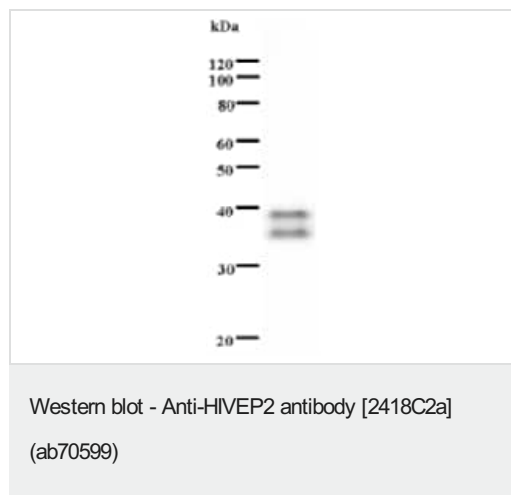
配列類似性

Contains 4 C2H2-type zinc fingers.

細胞内局在

Nucleus.

画像



Anti-HIVEP2 antibody [2418C2a] (ab70599) + immunising recombinant protein

Predicted band size: 269 kDa

Observed band size: 35,39 kDa

The molecular weight of the bands on the western blot does not correspond to the molecular weight of the natural protein because only a fragment of the protein was used.

Our Abpromise to you: Quality guaranteed and expert technical support

- Replacement or refund for products not performing as stated on the datasheet
- Valid for 12 months from date of delivery
- Response to your inquiry within 24 hours
- We provide support in Chinese, English, French, German, Japanese and Spanish
- Extensive multi-media technical resources to help you
- We investigate all quality concerns to ensure our products perform to the highest standards

If the product does not perform as described on this datasheet, we will offer a refund or replacement. For full details of the Abpromise, please visit <https://www.abcam.co.jp/abpromise> or contact our technical team.

Terms and conditions

- Guarantee only valid for products bought direct from Abcam or one of our authorized distributors