

# Anti-HIV1 tat antibody [N1] ab42360

画像数 1

### 製品の概要

---

製品名	Anti-HIV1 tat antibody [N1]
製品の詳細	Mouse monoclonal [N1] to HIV1 tat
由来種	Mouse
アプリケーション	<b>適用あり:</b> ELISA, WB
種交差性	<b>交差種:</b> Human immunodeficiency virus
免疫原	Recombinant full length protein corresponding to HIV1 tat.
エピトープ	Mapped to amino acids 71-81 (KQPASQPRGDP) - B subtype aa consensus).
特記事項	Also known as clone 02-012.  The Life Science industry has been in the grips of a reproducibility crisis for a number of years. Abcam is leading the way in addressing this with our range of recombinant monoclonal antibodies and knockout edited cell lines for gold-standard validation. Please check that this product meets your needs before purchasing.  If you have any questions, special requirements or concerns, please send us an inquiry and/or contact our Support team ahead of purchase. Recommended alternatives for this product can be found below, along with publications, customer reviews and Q&As

### 製品の特性

---

製品の状態	Liquid
保存方法	Shipped at 4°C. Upon delivery aliquot and store at -20°C or -80°C. Avoid repeated freeze / thaw cycles.
バッファー	pH: 7.40 Preservative: 0.1% Sodium azide Constituent: PBS
精製度	Protein G purified
ポリ/モノ	モノクローナル
クローン名	N1
アイソタイプ	IgG3

### アプリケーション

## The Abpromise guarantee

**Abpromise保証は、次のテスト済みアプリケーションにおけるab42360の使用に適用されます**

アプリケーションノートには、推奨の開始希釈率がありますが、適切な希釈率につきましてはご検討ください。

アプリケーション	Abreviews	特記事項
ELISA		
WB		

## 追加情報

ELISA: 1/500 - 1/5000.

WB: 1/500 - 1/5000. Predicted molecular weight: 59 kDa.

This product reacts in ELISA and WB with HIV1 Tat of the HxB2, BH10, IIIIB, HAN strains.

Not yet tested in other applications.

Optimal dilutions/concentrations should be determined by the end user.

## ターゲット情報

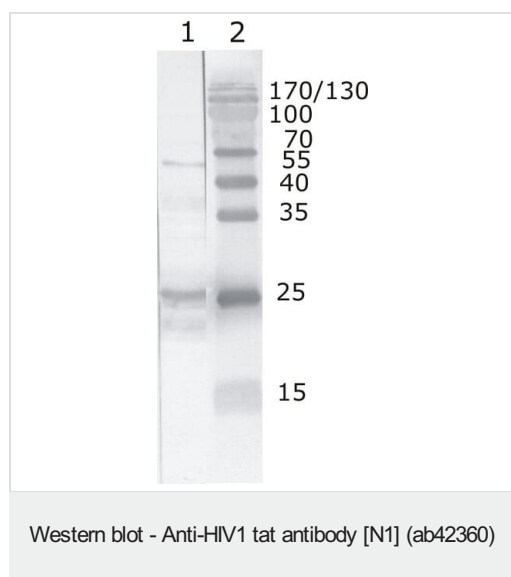
### 関連性

HIV1 tat (Transactivator of Transcription) protein is a pleiotropic factor that induces a broad range of biological effects in numerous cell types. At the HIV promoter, tat is a powerful transactivator of gene expression which acts by inducing chromatin remodeling and by recruiting elongation-competent transcriptional complexes on to the viral LTR.

### 細胞内局在

Nuclear. Upon stimulation with EDN1, it is exported from the nucleus to the perinuclear region.

## 画像



**Lane 1** : Anti-HIV1 tat antibody [N1] (ab42360)

**Lane 1** : Recombinant HIV1 Tat (B subtype)

**Lane 2** : Protein size marker

**Predicted band size:** 59 kDa

**Please note:** All products are "FOR RESEARCH USE ONLY. NOT FOR USE IN DIAGNOSTIC PROCEDURES"

## **Our Abpromise to you: Quality guaranteed and expert technical support**

---

- Replacement or refund for products not performing as stated on the datasheet
- Valid for 12 months from date of delivery
- Response to your inquiry within 24 hours
  
- We provide support in Chinese, English, French, German, Japanese and Spanish
- Extensive multi-media technical resources to help you
- We investigate all quality concerns to ensure our products perform to the highest standards

If the product does not perform as described on this datasheet, we will offer a refund or replacement. For full details of the Abpromise, please visit <https://www.abcam.co.jp/abpromise> or contact our technical team.

## **Terms and conditions**

---

- Guarantee only valid for products bought direct from Abcam or one of our authorized distributors