

Anti-HIV1 tat antibody [1] ab42359

11 References [画像数 1](#)

製品の概要

製品名	Anti-HIV1 tat antibody [1]
製品の詳細	Mouse monoclonal [1] to HIV1 tat
由来種	Mouse
特異性	This antibody reacts with the rTat consensus sequences of HIV1 subtypes A (DPVDPNLE), B (EPVDPRLE) and C (EPVDPNLE).
アプリケーション	適用あり: Radioimmunoprecipitation, IHC-P, ELISA, WB
種交差性	交差種: Human immunodeficiency virus
免疫原	Recombinant fragment corresponding to HIV-1 HIV1 tat.
エピトープ	Mapped to amino acids 2-9 (EPVDPRLE - B subtype consensus).
特記事項	Also known as clone 02-001. The Life Science industry has been in the grips of a reproducibility crisis for a number of years. Abcam is leading the way in addressing this with our range of recombinant monoclonal antibodies and knockout edited cell lines for gold-standard validation. Please check that this product meets your needs before purchasing. If you have any questions, special requirements or concerns, please send us an inquiry and/or contact our Support team ahead of purchase. Recommended alternatives for this product can be found below, along with publications, customer reviews and Q&As

製品の特性

製品の状態	Liquid
保存方法	Shipped at 4°C. Store at +4°C short term (1-2 weeks). Upon delivery aliquot. Store at -20°C or -80°C. Avoid freeze / thaw cycle.
バッファー	pH: 7.40 Preservative: 0.1% Sodium azide Constituent: PBS
精製度	Protein G purified
ポリ/モノ	モノクローナル
クローン名	1
アイソタイプ	IgG1

アプリケーション

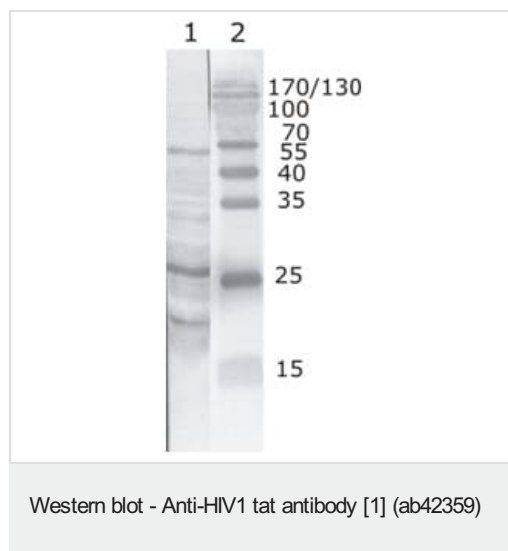
The Abpromise guarantee Abpromise保証は、 次のテスト済みアプリケーションにおけるab42359の使用に適用されます
アプリケーションノートには、推奨の開始希釈率がありますが、適切な希釈率につきましてはご検討ください。

アプリケーション	Abreviews	特記事項
Radioimmunoprecipitation		Use at an assay dependent concentration.
IHC-P		Use at an assay dependent concentration.
ELISA		Use a concentration of 0.02 - 0.05 µg/ml.
WB		Use a concentration of 1 - 2 µg/ml.

ターゲット情報

関連性	HIV1 tat (Transactivator of Transcription) protein is a pleiotropic factor that induces a broad range of biological effects in numerous cell types. At the HIV promoter, tat is a powerful transactivator of gene expression which acts by inducing chromatin remodeling and by recruiting elongation-competent transcriptional complexes on to the viral LTR.
細胞内局在	Nuclear. Upon stimulation with EDN1, it is exported from the nucleus to the perinuclear region.

画像



Lane 1 : Anti-HIV1 tat antibody [1] (ab42359)

Lane 1 : Recombinant HIV1 Tat (B subtype)

Lane 2 : Protein size marker

Please note: All products are "FOR RESEARCH USE ONLY. NOT FOR USE IN DIAGNOSTIC PROCEDURES"

Our Abpromise to you: Quality guaranteed and expert technical support

- Replacement or refund for products not performing as stated on the datasheet
- Valid for 12 months from date of delivery

- Response to your inquiry within 24 hours
- We provide support in Chinese, English, French, German, Japanese and Spanish
- Extensive multi-media technical resources to help you
- We investigate all quality concerns to ensure our products perform to the highest standards

If the product does not perform as described on this datasheet, we will offer a refund or replacement. For full details of the Abpromise, please visit <https://www.abcam.co.jp/abpromise> or contact our technical team.

Terms and conditions

- Guarantee only valid for products bought direct from Abcam or one of our authorized distributors