

Anti-HIV1 p55 + p24 + p17 antibody ab63917

★★★★★ **2 Abreviews** **30 References** 画像数 2

製品の概要

製品名	Anti-HIV1 p55 + p24 + p17 antibody
製品の詳細	Rabbit polyclonal to HIV1 p55 + p24 + p17
由来種	Rabbit
アプリケーション	適用あり: WB, ELISA
種交差性	交差種: Human immunodeficiency virus
免疫原	Recombinant protein p55 over-expressed in E.coli using a plasmid carrying the Gag p55 coding region of HIV1 virus.
ポジティブ・コントロール	Extract of MT4 cells infected with HIV1 (LAI strain); HeLa whole cell lysate transfected with a plasmid expressing HIV1 gag.
特記事項	<p>The Life Science industry has been in the grips of a reproducibility crisis for a number of years. Abcam is leading the way in addressing this with our range of recombinant monoclonal antibodies and knockout edited cell lines for gold-standard validation. Please check that this product meets your needs before purchasing.</p> <p>If you have any questions, special requirements or concerns, please send us an inquiry and/or contact our Support team ahead of purchase. Recommended alternatives for this product can be found below, along with publications, customer reviews and Q&As</p>

製品の特性

製品の状態	Liquid
保存方法	Shipped at 4°C. Store at +4°C short term (1-2 weeks). Store at -20°C or -80°C. Avoid freeze / thaw cycle.
バッファー	<p>pH: 6</p> <p>Preservative: 0.09% Sodium azide</p> <p>Constituent: Whole serum</p>
精製度	Whole antiserum
ポリ/モノ	ポリクローナル
アイソタイプ	IgG

アプリケーション

The Abpromise guarantee

Abpromise保証は、次のテスト済みアプリケーションにおけるab63917の使用に適用されます

アプリケーションノートには、推奨の開始希釈率がありますが、適切な希釈率につきましてはご検討ください。

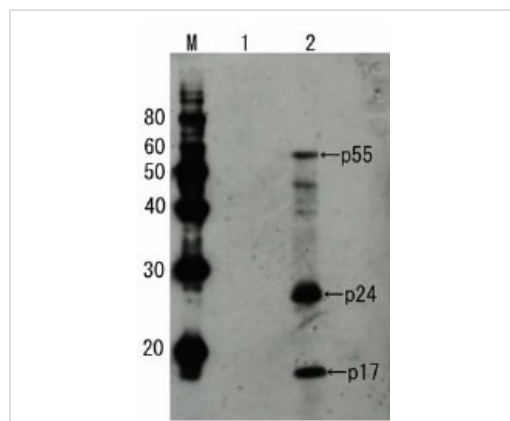
アプリケーション	Abreviews	特記事項
WB	★★★★★ (2)	1/2000. Detects a band of approximately 17,24,55 kDa.
ELISA		Use at an assay dependent concentration.

ターゲット情報

関連性

HIV1 performs highly complex orchestrated tasks during the assembly, budding, maturation and infection stages of the viral replication cycle. During viral assembly, the proteins form membrane associations and self-associations that ultimately result in budding of an immature virion from the infected cell. Gag precursors also function during viral assembly to selectively bind and package two plus strands of genomic RNA. p55 is digested by HIV1 protease into intermediate products p41 and p15. p41 is further digested into matrix protein p17 and capsid protein p24. Likewise, p15 is further digested into nucleocapsid protein p7 and to p6 and p1.

画像



Western blot - Anti-HIV1 p55 + p24 + p17 antibody (ab63917)

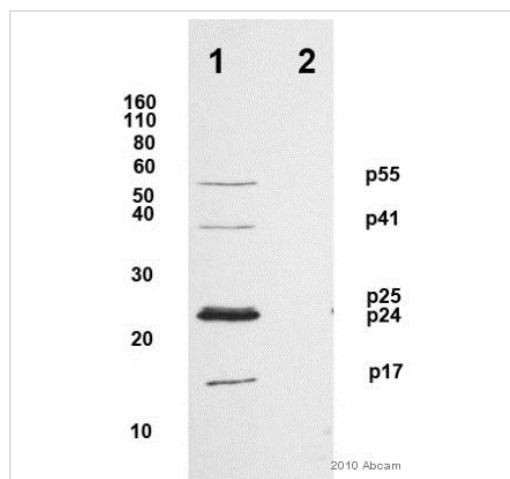
All lanes : Anti-HIV1 p55 + p24 + p17 antibody (ab63917) at 1/2000 dilution

Lane 1 : Extract of MT4 cells

Lane 2 : Extract of MT4 cells infected with HIV1 (LAI strain)

Observed band size: 17,24,55 kDa

Additional bands at: 39 kDa, 45 kDa. We are unsure as to the identity of these extra bands.



Western blot - Anti-HIV1 p55 + p24 + p17 antibody (ab63917)

This image is courtesy of an Abreview submitted by David Carpentier.

All lanes : Anti-HIV1 p55 + p24 + p17 antibody (ab63917) at 1/2000 dilution

Lane 1 : HeLa (human epithelial cell line from cervix adenocarcinoma) whole cell lysate transfected with a plasmid expressing HIV1 gag

Lane 2 : Untransfected HeLa whole cell lysate

Secondary

All lanes : Goat anti-rabbit IgG (whole molecule) HRP polymer at 1/50000 dilution

Please note: All products are "FOR RESEARCH USE ONLY. NOT FOR USE IN DIAGNOSTIC PROCEDURES"

Our Abpromise to you: Quality guaranteed and expert technical support

- Replacement or refund for products not performing as stated on the datasheet
- Valid for 12 months from date of delivery
- Response to your inquiry within 24 hours
- We provide support in Chinese, English, French, German, Japanese and Spanish
- Extensive multi-media technical resources to help you
- We investigate all quality concerns to ensure our products perform to the highest standards

If the product does not perform as described on this datasheet, we will offer a refund or replacement. For full details of the Abpromise, please visit <https://www.abcam.co.jp/abpromise> or contact our technical team.

Terms and conditions

- Guarantee only valid for products bought direct from Abcam or one of our authorized distributors