

### Anti-HIV1 p24 antibody [5] ab63958

★★★★★ [2 Abreviews](#) [1 References](#) [画像数 1](#)

#### 製品の概要

製品名	Anti-HIV1 p24 antibody [5]
製品の詳細	Mouse monoclonal [5] to HIV1 p24
由来種	Mouse
特異性	Reacts with HIV1 native p24 as well rp24 expressed in bacteria and Cos-7 cells. Reacts with rNef of HIV1 subtype B, C and A.
アプリケーション	<b>適用あり:</b> ELISA, WB, ICC/IF, Radioimmunoprecipitation
種交差性	<b>交差種:</b> Human immunodeficiency virus
免疫原	Synthetic peptide: TPQDLNTMLNTVGGH , corresponding to amino acids 48-62 of HIV1 HXB2 p24.

 [Run BLAST with](#)

 [Run BLAST with](#)

#### 特記事項

The Life Science industry has been in the grips of a reproducibility crisis for a number of years. Abcam is leading the way in addressing this with our range of recombinant monoclonal antibodies and knockout edited cell lines for gold-standard validation. Please check that this product meets your needs before purchasing.

If you have any questions, special requirements or concerns, please send us an inquiry and/or contact our Support team ahead of purchase. Recommended alternatives for this product can be found below, along with publications, customer reviews and Q&As

#### 製品の特性

製品の状態	Liquid
保存方法	Shipped at 4°C. Store at +4°C short term (1-2 weeks). Upon delivery aliquot. Store at -20°C or -80°C. Avoid freeze / thaw cycle.
バッファー	pH: 7.40 Preservative: 0.1% Sodium azide Constituent: PBS
精製度	Protein A purified
ポリ/モノ	モノクローナル
クローン名	5

## アプリケーション

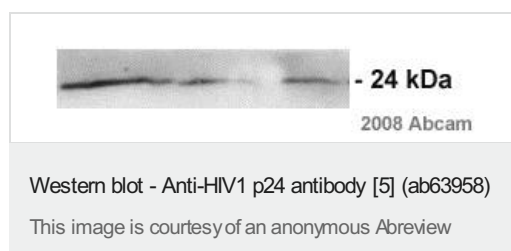
**The Abpromise guarantee** Abpromise保証は、 次のテスト済みアプリケーションにおけるab63958の使用に適用されます  
アプリケーションノートには、推奨の開始希釈率がありますが、適切な希釈率につきましてはご検討ください。

アプリケーション	Abreviews	特記事項
ELISA		1/25000.
WB	★★★★★ (1)	1/1000. Predicted molecular weight: 24 kDa.
ICC/IF		Use at an assay dependent concentration.
Radioimmunoprecipitation		Use at an assay dependent concentration.

## ターゲット情報

関連性	HIV1 performs highly complex orchestrated tasks during the assembly, budding, maturation and infection stages of the viral replication cycle. During viral assembly, the proteins form membrane associations and self-associations that ultimately result in budding of an immature virion from the infected cell. Gag precursors also function during viral assembly to selectively bind and package two plus strands of genomic RNA. Capsid protein p24 probably forms the conical core of the virus that encapsulates the genomic RNA-nucleocapsid complex.
細胞内局在	Membrane

## 画像



**All lanes :** Anti-HIV1 p24 antibody [5] (ab63958) at 1/1000 dilution

**All lanes :** Hela cells infected with HIV1 (4 hours)

### Secondary

**All lanes :** Goat anti-mouse conjugated to HRP at 1/2500 dilution

**Predicted band size:** 24 kDa

**Please note:** All products are "FOR RESEARCH USE ONLY. NOT FOR USE IN DIAGNOSTIC PROCEDURES"

## Our Abpromise to you: Quality guaranteed and expert technical support

- Replacement or refund for products not performing as stated on the datasheet

- Valid for 12 months from date of delivery
- Response to your inquiry within 24 hours
- We provide support in Chinese, English, French, German, Japanese and Spanish
- Extensive multi-media technical resources to help you
- We investigate all quality concerns to ensure our products perform to the highest standards

If the product does not perform as described on this datasheet, we will offer a refund or replacement. For full details of the Abpromise, please visit <https://www.abcam.co.jp/abpromise> or contact our technical team.

#### **Terms and conditions**

---

- Guarantee only valid for products bought direct from Abcam or one of our authorized distributors