

Anti-HIV1 Nef antibody ab63919

画像数 1

製品の概要

製品名	Anti-HIV1 Nef antibody
製品の詳細	Guinea pig polyclonal to HIV1 Nef
由来種	Guinea pig
アプリケーション	適用あり: WB, ELISA
種交差性	交差種: Human immunodeficiency virus
免疫原	Recombinant Nef protein over-expressed in E. coli with a plasmid carrying the Nef coding region of HIV1 virus, subtype B.
ポジティブ・コントロール	Extract of MT4 cells uninfected or infected with HIV1 (LAI strain).
特記事項	<p>The Life Science industry has been in the grips of a reproducibility crisis for a number of years. Abcam is leading the way in addressing this with our range of recombinant monoclonal antibodies and knockout edited cell lines for gold-standard validation. Please check that this product meets your needs before purchasing.</p> <p>If you have any questions, special requirements or concerns, please send us an inquiry and/or contact our Support team ahead of purchase. Recommended alternatives for this product can be found below, along with publications, customer reviews and Q&As</p>

製品の特性

製品の状態	Liquid
保存方法	Shipped at 4°C. Store at +4°C short term (1-2 weeks). Store at -20°C or -80°C. Avoid freeze / thaw cycle.
バッファー	pH: 6 Preservative: 0.09% Sodium azide Constituent: Whole serum
精製度	Whole antiserum
特記事項 (精製)	ab93919 is highly purified by several steps of chromatography.
ポリ/モノ	ポリクローナル
アイソタイプ	IgG

アプリケーション

The Abpromise guarantee **Abpromise保証は、** 次のテスト済みアプリケーションにおけるab63919の使用に適用されます

アプリケーションノートには、推奨の開始希釈率がありますが、適切な希釈率につきましてはご検討ください。

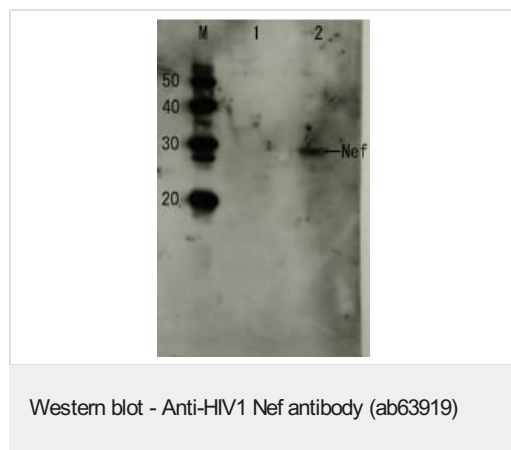
アプリケーション	Abreviews	特記事項
WB		1/1000. Predicted molecular weight: 24 kDa.
ELISA		Use at an assay dependent dilution.

ターゲット情報

関連性

Nef is a early protein that appears to play a role in optimizing the host cell environment for viral replication without causing cell death by apoptosis. Nef enhances virus infectivity and pathogenicity. It down modulates surface MHC I molecules and internalized molecules are sequestered to the trans-Golgi network. The number of cell surface CD4 antigen are decreased by interacting with the Src family kinase LCK thereby inducing LCK CD4 dissociation and by increasing clathrin-dependent endocytosis of this antigen to target it to lysosomal degradation.

画像



All lanes : Anti-HIV1 Nef antibody (ab63919) at 1/1000 dilution

Lane 1 : Extract of MT4 cells

Lane 2 : Extract of MT4 cells infected with HIV1 (LAI strain)

Predicted band size: 24 kDa

Observed band size: 27 kDa

Please note: All products are "FOR RESEARCH USE ONLY. NOT FOR USE IN DIAGNOSTIC PROCEDURES"

Our Abpromise to you: Quality guaranteed and expert technical support

- Replacement or refund for products not performing as stated on the datasheet
- Valid for 12 months from date of delivery
- Response to your inquiry within 24 hours
- We provide support in Chinese, English, French, German, Japanese and Spanish
- Extensive multi-media technical resources to help you
- We investigate all quality concerns to ensure our products perform to the highest standards

If the product does not perform as described on this datasheet, we will offer a refund or replacement. For full details of the Abpromise,

please visit <https://www.abcam.co.jp/abpromise> or contact our technical team.

Terms and conditions

- Guarantee only valid for products bought direct from Abcam or one of our authorized distributors