

Anti-HIV1 Nef antibody [3D12] ab42355

[19 References](#) [画像数 1](#)

製品の概要

製品名	Anti-HIV1 Nef antibody [3D12]
製品の詳細	Mouse monoclonal [3D12] to HIV1 Nef
由来種	Mouse
特異性	This antibody reacts with the rNEF of HIV 1 subtype B and C,
アプリケーション	適用あり: ICC/IF, ELISA, WB
種交差性	交差種: Human immunodeficiency virus
免疫原	Recombinant Nef protein of HIV1 HXB2.
エピトープ	Mapped to amino acids 35-50 (RDLEKHGAISSNTAA - HIV1 HXB2)
特記事項	<p>Also known as clone 01-002.</p> <p>The Life Science industry has been in the grips of a reproducibility crisis for a number of years. Abcam is leading the way in addressing this with our range of recombinant monoclonal antibodies and knockout edited cell lines for gold-standard validation. Please check that this product meets your needs before purchasing.</p> <p>If you have any questions, special requirements or concerns, please send us an inquiry and/or contact our Support team ahead of purchase. Recommended alternatives for this product can be found below, along with publications, customer reviews and Q&As</p>

製品の特性

製品の状態	Liquid
保存方法	Shipped at 4°C. Upon delivery aliquot and store at -20°C or -80°C. Avoid repeated freeze / thaw cycles.
バッファー	pH: 7.40 Preservative: 0.1% Sodium azide Constituent: PBS
精製度	Protein A purified
特記事項(精製)	Purified by affinity chromatography.
ポリモノ	モノクローナル
クローン名	3D12
アイソタイプ	IgG1

アプリケーション

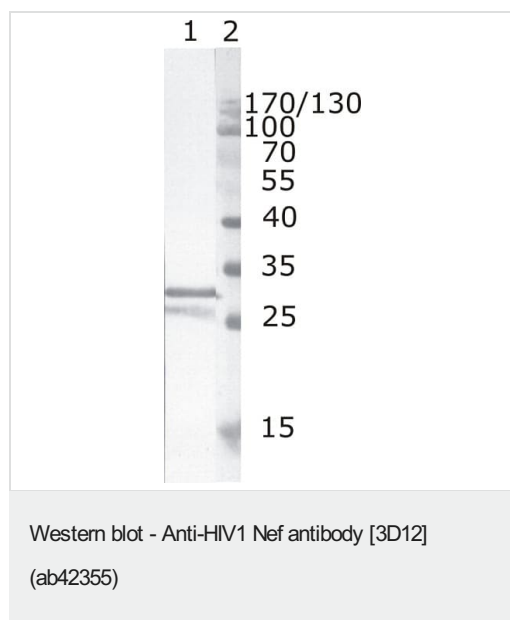
The Abpromise guarantee Abpromise保証は、次のテスト済みアプリケーションにおけるab42355の使用に適用されます
アプリケーションノートには、推奨の開始希釈率がありますが、適切な希釈率につきましてはご検討ください。

アプリケーション	Abreviews	特記事項
ICC/IF		Use at an assay dependent concentration.
ELISA		1/5000.
WB		1/500. Predicted molecular weight: 24 kDa.

ターゲット情報

関連性 Nef is a early protein that appears to play a role in optimizing the host cell environment for viral replication without causing cell death by apoptosis. Nef enhances virus infectivity and pathogenicity. It down modulates surface MHC I molecules and internalized molecules are sequestered to the trans-Golgi network. The number of cell surface CD4 antigen are decreased by interacting with the Src family kinase LCK thereby inducing LCK CD4 dissociation and by increasing clathrin-dependent endocytosis of this antigen to target it to lysosomal degradation.

画像



Lane 1 : Anti-HIV1 Nef antibody [3D12] (ab42355)

Lane 1 : Recombinant HIV1 Nef (B subtype)

Lane 2 : Protein size marker

Predicted band size: 24 kDa

Please note: All products are "FOR RESEARCH USE ONLY. NOT FOR USE IN DIAGNOSTIC PROCEDURES"

Our Abpromise to you: Quality guaranteed and expert technical support

- Replacement or refund for products not performing as stated on the datasheet
- Valid for 12 months from date of delivery
- Response to your inquiry within 24 hours

- We provide support in Chinese, English, French, German, Japanese and Spanish
- Extensive multi-media technical resources to help you
- We investigate all quality concerns to ensure our products perform to the highest standards

If the product does not perform as described on this datasheet, we will offer a refund or replacement. For full details of the Abpromise, please visit <https://www.abcam.co.jp/abpromise> or contact our technical team.

Terms and conditions

- Guarantee only valid for products bought direct from Abcam or one of our authorized distributors