

# Anti-HIV1 gp120 antibody ab106578

★★★★★ **1 Abreviews** [画像数 2](#)

### 製品の概要

製品名	Anti-HIV1 gp120 antibody
製品の詳細	Rabbit polyclonal to HIV1 gp120
由来種	Rabbit
アプリケーション	<b>適用あり:</b> WB
種交差性	<b>交差種:</b> Human immunodeficiency virus
免疫原	Recombinant fragment corresponding to HIV1 gp120. 16 amino acid peptide representing the major HIV1 consensus sequence near the N terminal region of V1/V2 loop (GenBank accession no. AAT67551).
特記事項	<p>The Life Science industry has been in the grips of a reproducibility crisis for a number of years. Abcam is leading the way in addressing this with our range of recombinant monoclonal antibodies and knockout edited cell lines for gold-standard validation. Please check that this product meets your needs before purchasing.</p> <p>If you have any questions, special requirements or concerns, please send us an inquiry and/or contact our Support team ahead of purchase. Recommended alternatives for this product can be found below, along with publications, customer reviews and Q&amp;As</p>

### 製品の特性

製品の状態	Liquid
保存方法	Shipped at 4°C. Store at 4°C (stable for up to 12 months).
バッファー	pH: 7.2 Preservative: 0.02% Sodium azide Constituent: PBS
精製度	Immunogen affinity purified
ポリ/モノ	ポリクローナル
アイソタイプ	IgG

### アプリケーション

The Abpromise guarantee

**Abpromise保証は、次のテスト済みアプリケーションにおけるab106578の使用に適用されます**

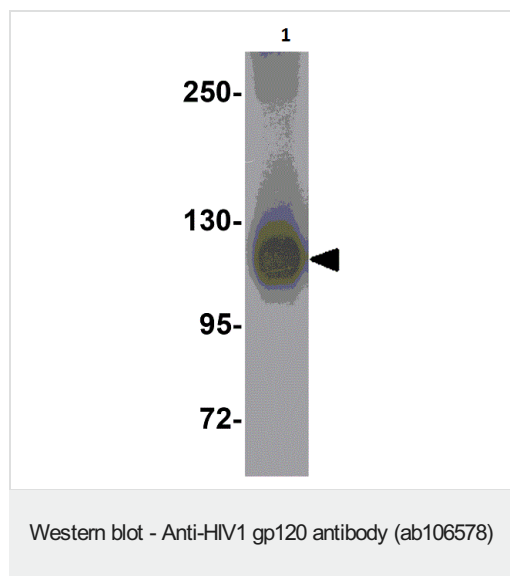
アプリケーションノートには、推奨の開始希釈率がありますが、適切な希釈率につきましてはご検討ください。

アプリケーション	Abreviews	特記事項
WB		Use a concentration of 0.5 - 1 µg/ml. Predicted molecular weight: 120 kDa.

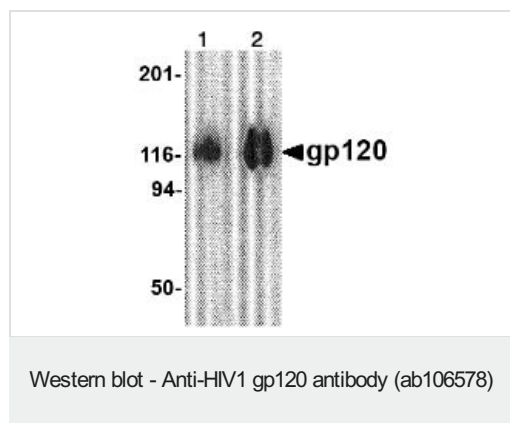
## ターゲット情報

関連性	HIV1 is equipped with the envelope gp160 glycoprotein for interaction with Langerhans cells (LCs) and dendritic cells (DCs), the members of the innate immune system, which confront the virus at the portal of virus entry in the human body. These cells are equipped with receptors by which they bind and endocytose the virus. The gp120 glycoprotein is used for binding to CD4 receptor and CCR5 co-receptor of T helper 2 (Th2) cells, and is able to induce FcεRI(+) hematopoietic cells to produce IL4, which inactivates the host adaptive immune response.
細胞内局在	Envelope surface glycoprotein.

## 画像



Western Blot of HIV1 gp120 (5ng) labeling HIV1 gp120 with Anti-HIV1 gp120 antibody (ab106578) at 1µg/ml.



**Lane 1 :** Anti-HIV1 gp120 antibody (ab106578) at 1 µg/ml

**Lane 2 :** Anti-HIV1 gp120 antibody (ab106578) at 2 µg/ml

**All lanes :** gp120 protein

Lysates/proteins at 1 µg per lane.

**Predicted band size:** 120 kDa

**Please note:** All products are "FOR RESEARCH USE ONLY. NOT FOR USE IN DIAGNOSTIC PROCEDURES"

### **Our Abpromise to you: Quality guaranteed and expert technical support**

---

- Replacement or refund for products not performing as stated on the datasheet
- Valid for 12 months from date of delivery
- Response to your inquiry within 24 hours
  
- We provide support in Chinese, English, French, German, Japanese and Spanish
- Extensive multi-media technical resources to help you
- We investigate all quality concerns to ensure our products perform to the highest standards

If the product does not perform as described on this datasheet, we will offer a refund or replacement. For full details of the Abpromise, please visit <https://www.abcam.co.jp/abpromise> or contact our technical team.

### **Terms and conditions**

---

- Guarantee only valid for products bought direct from Abcam or one of our authorized distributors