

# Anti-Histone H1.5 antibody - ChIP Grade ab18208

★★★★☆ **4 Abreviews**   **9 References**   画像数 5

### 製品の概要

製品名	Anti-Histone H1.5 antibody - ChIP Grade
製品の詳細	Rabbit polyclonal to Histone H1.5 - ChIP Grade
由来種	Rabbit
アプリケーション	<b>適用あり:</b> ChIP, WB, IHC-P, ICC/IF
種交差性	<b>交差種:</b> Human, Recombinant fragment
免疫原	Synthetic peptide conjugated to KLH derived from within residues 1 - 100 of Human Histone H1.5. Immunogen の所有権に関して
ポジティブ・コントロール	Recombinant histone H1.5
特記事項	<p>The Life Science industry has been in the grips of a reproducibility crisis for a number of years. Abcam is leading the way in addressing this with our range of recombinant monoclonal antibodies and knockout edited cell lines for gold-standard validation. Please check that this product meets your needs before purchasing.</p> <p>If you have any questions, special requirements or concerns, please send us an inquiry and/or contact our Support team ahead of purchase. Recommended alternatives for this product can be found below, along with publications, customer reviews and Q&amp;As</p>

### 製品の特性

製品の状態	Liquid
保存方法	Shipped at 4°C. Store at +4°C short term (1-2 weeks). Upon delivery aliquot. Store at -20°C or -80°C. Avoid freeze / thaw cycle.
バッファー	<p>pH: 7.40</p> <p>Preservative: 0.02% Sodium azide</p> <p>Constituent: PBS</p> <p>Batches of this product that have a concentration &lt; 1mg/ml may have BSA added as a stabilising agent. If you would like information about the formulation of a specific lot, please contact our scientific support team who will be happy to help.</p>
精製度	Immunogen affinity purified
ポリ/モノ	ポリクローナル
アイソタイプ	IgG

## アプリケーション

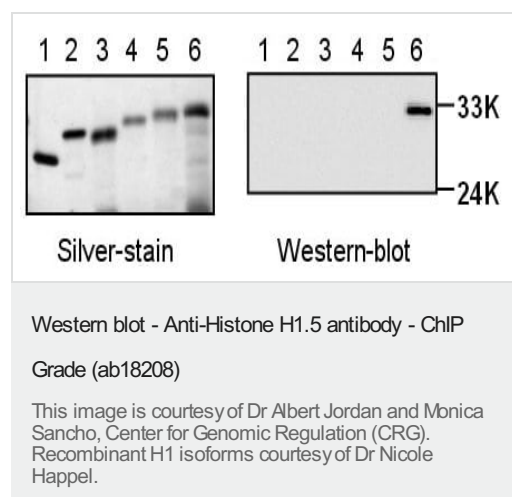
**The Abpromise guarantee** Abpromise保証は、次のテスト済みアプリケーションにおけるab18208の使用に適用されます  
アプリケーションノートには、推奨の開始希釈率がありますが、適切な希釈率につきましてはご検討ください。

アプリケーション	Abreviews	特記事項
ChIP		Use 2 µg for 25 µg of chromatin.
WB	★★★★★ (4)	Use a concentration of 0.5 µg/ml. Detects a band of approximately 32 kDa (predicted molecular weight: 32 kDa).
IHC-P		1/800. Perform heat mediated antigen retrieval before commencing with IHC staining protocol.
ICC/IF		Use a concentration of 5 µg/ml.

## ターゲット情報

機能	Histones H1 are necessary for the condensation of nucleosome chains into higher order structures.
配列類似性	Belongs to the histone H1/H5 family. Contains 1 H15 (linker histone H1/H5 globular) domain.
細胞内局在	Nucleus. Chromosome.

## 画像

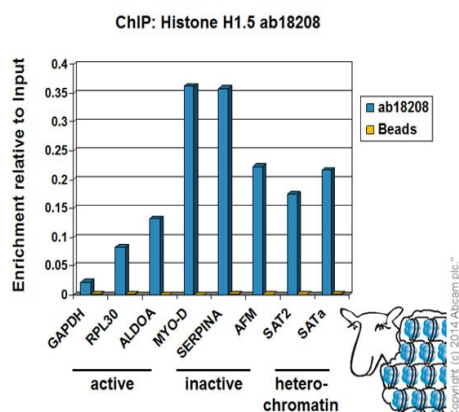


**All lanes :** Anti-Histone H1.5 antibody - ChIP Grade (ab18208) at 0.5 µg/ml

- Lane 1 :** Recombinant histone H1
- Lane 2 :** Recombinant histone H1.1
- Lane 3 :** Recombinant histone H1.2
- Lane 4 :** Recombinant histone H1.3
- Lane 5 :** Recombinant histone H1.4
- Lane 6 :** Recombinant histone H1.5

**Predicted band size:** 32 kDa

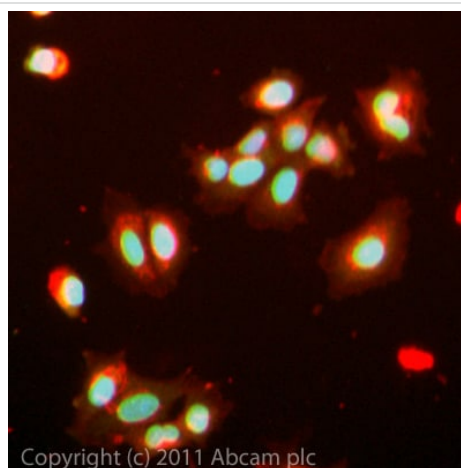
**Observed band size:** 32 kDa



Every new batch of this antibody is tested at Abcam in ChIP.

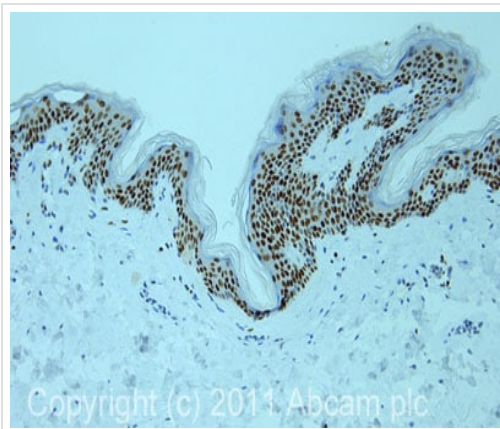
ChIP - Anti-Histone H1.5 antibody - ChIP Grade  
(ab18208)

Chromatin was prepared from HeLa cells according to the Abcam X-ChIP protocol. Cells were fixed with formaldehyde for 10 minutes. The ChIP was performed with 25µg of chromatin, 2µg of ab18208 (blue), and 20µl of Protein A/G sepharose beads. No antibody was added to the beads control (yellow). The immunoprecipitated DNA was quantified by real time PCR (Taqman approach for active and inactive loci, Sybr green approach for heterochromatic loci). Primers and probes are located in the first kb of the transcribed region.



Immunocytochemistry/ Immunofluorescence - Anti-Histone H1.5 antibody - ChIP Grade (ab18208)

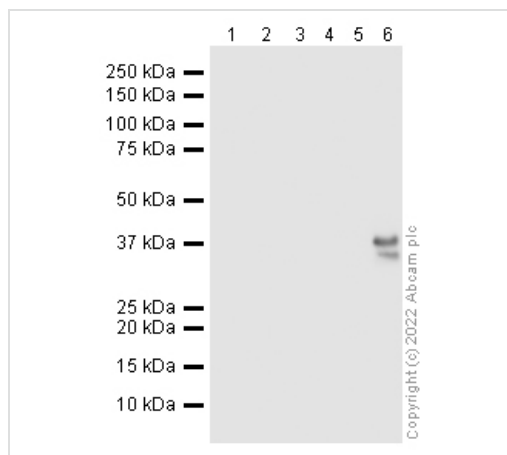
ICC/IF image of ab18208 stained MCF7 cells. The cells were 100% methanol fixed (5 min) and then incubated in 1%BSA / 10% normal goat serum / 0.3M glycine in 0.1% PBS-Tween for 1h to permeabilise the cells and block non-specific protein-protein interactions. The cells were then incubated with the antibody (ab18208, 5µg/ml) overnight at +4°C. The secondary antibody (green) was **ab96879** Alexa Fluor® 488 goat anti-mouse IgG (H+L) used at a 1/250 dilution for 1h. Alexa Fluor® 594 WGA was used to label plasma membranes (red) at a 1/200 dilution for 1h. DAPI was used to stain the cell nuclei (blue) at a concentration of 1.43µM.



Immunohistochemistry (Formalin/PFA-fixed paraffin-embedded sections) - Anti-Histone H1.5 antibody - ChIP Grade (ab18208)

IHC image of ab18208 staining in human skin formalin fixed paraffin embedded tissue section, performed on a Leica Bond™ system using the standard protocol F. The section was pre-treated using heat mediated antigen retrieval with sodium citrate buffer (pH6, epitope retrieval solution 1) for 20 mins. The section was then incubated with ab18208, 1 µg/ml, for 15 mins at room temperature and detected using an HRP conjugated compact polymer system. DAB was used as the chromogen. The section was then counterstained with haematoxylin and mounted with DPX.

For other IHC staining systems (automated and non-automated) customers should optimize variable parameters such as antigen retrieval conditions, primary antibody concentration and antibody incubation times.



Western blot - Anti-Histone H1.5 antibody - ChIP Grade (ab18208)

**All lanes :** Anti-Histone H1.5 antibody - ChIP Grade (ab18208) at 0.5 µg/ml

**Lane 1 :** Histone H1 Rec

**Lane 2 :** Histone H1.1 Rec

**Lane 3 :** Histone H1.2 Rec

**Lane 4 :** Histone H1.3 Rec

**Lane 5 :** Histone H1.4 Rec

**Lane 6 :** Histone H1.5 Rec

Lysates/proteins at 0.1 µg per lane.

### Secondary

**All lanes :** Goat polyclonal to Rabbit IgG - H&L - Pre-Adsorbed (HRP) at 1/50000 dilution

**Predicted band size:** 32 kDa

**Observed band size:** 34,37 kDa

**Exposure time:** 1 minute

This blot was produced using a 4-12% Bis-tris gel under the MES buffer system. The gel was run at 200V for 35 minutes before being transferred onto a Nitrocellulose membrane at 30V for 70 minutes. The membrane was then blocked for an hour using 3% Milk before being incubated with ab18208 overnight at 4°C. Antibody binding was detected using an anti-rabbit antibody conjugated to HRP, and

**Please note:** All products are "FOR RESEARCH USE ONLY. NOT FOR USE IN DIAGNOSTIC PROCEDURES"

### **Our Abpromise to you: Quality guaranteed and expert technical support**

---

- Replacement or refund for products not performing as stated on the datasheet
- Valid for 12 months from date of delivery
- Response to your inquiry within 24 hours
- We provide support in Chinese, English, French, German, Japanese and Spanish
- Extensive multi-media technical resources to help you
- We investigate all quality concerns to ensure our products perform to the highest standards

If the product does not perform as described on this datasheet, we will offer a refund or replacement. For full details of the Abpromise, please visit <https://www.abcam.co.jp/abpromise> or contact our technical team.

### **Terms and conditions**

---

- Guarantee only valid for products bought direct from Abcam or one of our authorized distributors