

Anti-Histone H1 (phospho) antibody ab4270

★★★★★ [1 Abreviews](#) [7 References](#) [画像数 2](#)

製品の概要

製品名	Anti-Histone H1 (phospho) antibody
製品の詳細	Rabbit polyclonal to Histone H1 (phospho)
由来種	Rabbit
アプリケーション	適用あり: ICC/IF, Flow Cyt, WB
種交差性	交差種: Mouse, Human
免疫原	Hyper-phosphorylated isoform of tetrahymena Histone H1
特記事項	<p>The Life Science industry has been in the grips of a reproducibility crisis for a number of years. Abcam is leading the way in addressing this with our range of recombinant monoclonal antibodies and knockout edited cell lines for gold-standard validation. Please check that this product meets your needs before purchasing.</p> <p>If you have any questions, special requirements or concerns, please send us an inquiry and/or contact our Support team ahead of purchase. Recommended alternatives for this product can be found below, along with publications, customer reviews and Q&As</p>

製品の特性

製品の状態	Liquid
保存方法	Shipped at 4°C. Store at +4°C short term (1-2 weeks). Upon delivery aliquot. Store at -20°C or -80°C. Avoid freeze / thaw cycle.
バッファー	<p>pH: 7.40</p> <p>Preservative: 0.035% Sodium azide</p> <p>Constituents: 1.3% Tris glycine, 30% Glycerol, 0.667% Sodium chloride</p>
精製度	Protein A purified
ポリ/モノ	ポリクローナル
アイソタイプ	IgG

アプリケーション

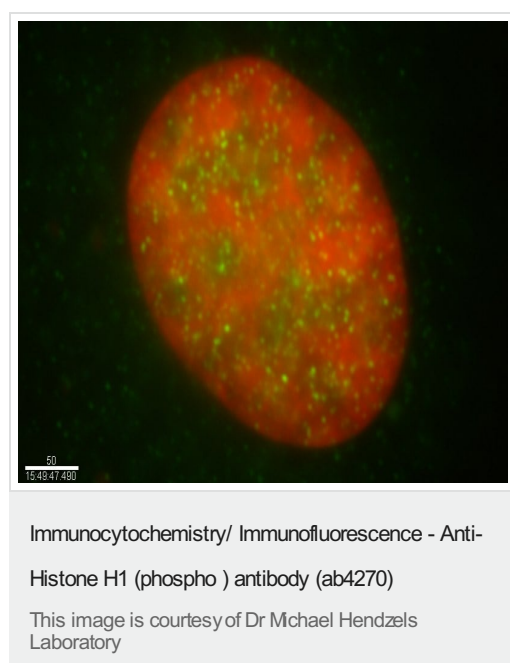
The Abpromise guarantee **Abpromise保証は、** 次のテスト済みアプリケーションにおけるab4270の使用に適用されます
 アプリケーションノートには、推奨の開始希釈率がありますが、適切な希釈率につきましてはご検討ください。

アプリケーション	Abreviews	特記事項
ICC/IF		1/100 - 1/100.
Flow Cyt		Use at an assay dependent concentration. PubMed: 18250156 ab171870 - Rabbit polyclonal IgG, is suitable for use as an isotype control with this antibody.
WB	★★★★★ (1)	Use a concentration of 1 - 2 µg/ml. Detects a band of approximately 32 kDa. Additional proteins at 66 kD and 100 kD were detected. It detected Histone H1 from acid extracts of colcemid treated HeLa cells but not untreated HeLa cells. Acid extracts from colcemid treated and untreated HeLa cell were resolved by electrophoresis, transferred to nitrocellulose and probed with anti-phospho- Histone H1 (2 µg/ml).

ターゲット情報

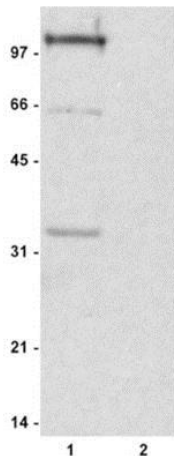
機能	Histones H1 are necessary for the condensation of nucleosome chains into higher order structures.
配列類似性	Belongs to the histone H1/H5 family. Contains 1 H15 (linker histone H1/H5 globular) domain.
翻訳後修飾	Acetylated at Lys-26. Deacetylated at Lys-26 by SIRT1.
細胞内局在	Nucleus. Chromosome.

画像



Rabbit polyclonal to Histone H1 (phospho) (1/100).

Human neuroblastoma cell line SK-N-SH cultured on coverslips were fixed in 4% paraformaldehyde and then stained with ab4270 (green). The DNA stained with DAPI is shown in red. (100x magnification).



Western blot - Anti-Histone H1 (phospho) antibody (ab4270)

All lanes : Anti-Histone H1 (phospho) antibody (ab4270) at 2 µg/ml

Lane 1 : Colcemid treated HeLa cell lysate

Lane 2 : Untreated HeLa cell lysate

Secondary

Lane 1 : Goat anti-rabbit secondary antibody labeled with HRP

Lane 2 : Goat anti-rabbit secondary antibody labeled with HRP.

Developed using the ECL technique.

Please note: All products are "FOR RESEARCH USE ONLY. NOT FOR USE IN DIAGNOSTIC PROCEDURES"

Our Abpromise to you: Quality guaranteed and expert technical support

- Replacement or refund for products not performing as stated on the datasheet
- Valid for 12 months from date of delivery
- Response to your inquiry within 24 hours
- We provide support in Chinese, English, French, German, Japanese and Spanish
- Extensive multi-media technical resources to help you
- We investigate all quality concerns to ensure our products perform to the highest standards

If the product does not perform as described on this datasheet, we will offer a refund or replacement. For full details of the Abpromise, please visit <https://www.abcam.co.jp/abpromise> or contact our technical team.

Terms and conditions

- Guarantee only valid for products bought direct from Abcam or one of our authorized distributors