


Anti-HIPK4 antibody ab69565

画像数 3

製品の概要

製品名	Anti-HIPK4 antibody
製品の詳細	Rabbit polyclonal to HIPK4
由来種	Rabbit
アプリケーション	適用あり: WB, IHC-P, ICC/IF
種交差性	交差種: Human 交差が予測される動物種: Mouse, Rat 
免疫原	Synthesized peptide derived from an internal internal of human HIPK4.
ポジティブ・コントロール	A549 clls; HUVEC cells; testis tissue.
特記事項	<p>The Life Science industry has been in the grips of a reproducibility crisis for a number of years. Abcam is leading the way in addressing this with our range of recombinant monoclonal antibodies and knockout edited cell lines for gold-standard validation. Please check that this product meets your needs before purchasing.</p> <p>If you have any questions, special requirements or concerns, please send us an inquiry and/or contact our Support team ahead of purchase. Recommended alternatives for this product can be found below, along with publications, customer reviews and Q&As</p>

製品の特性

製品の状態	Liquid
保存方法	Shipped at 4°C. Upon delivery aliquot and store at -20°C. Avoid freeze / thaw cycles.
バッファー	pH: 7.4 Preservative: 0.02% Sodium azide Constituents: 50% Glycerol (glycerin, glycerine), 0.87% Sodium chloride, PBS
精製度	Immunogen affinity purified
ポリ/モノ	ポリクローナル
アイソタイプ	IgG

アプリケーション

The Abpromise guarantee

Abpromise保証は、次のテスト済みアプリケーションにおけるab69565の使用に適用されます

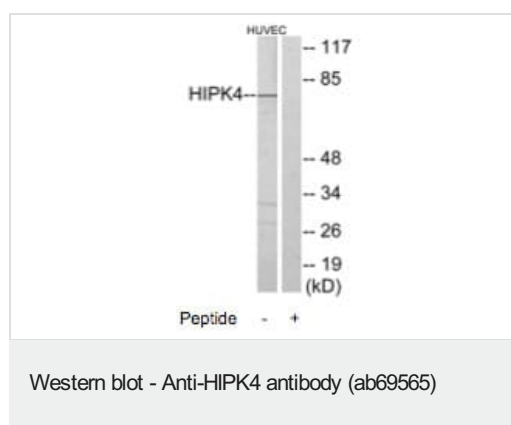
アプリケーションノートには、推奨の開始希釈率がありますが、適切な希釈率につきましてはご確認ください。

アプリケーション	Abreviews	特記事項
WB		1/500 - 1/1000. Detects a band of approximately 69 kDa (predicted molecular weight: 69 kDa).
IHC-P		1/50 - 1/100.
ICC/IF		1/500 - 1/1000.

ターゲット情報

機能	Protein kinase that phosphorylates human TP53 at Ser-9, and thus induces TP53 repression of BIRC5 promoter (By similarity). May act as a corepressor of transcription factors.
配列類似性	Belongs to the protein kinase superfamily. CMGC Ser/Thr protein kinase family. HIPK subfamily. Contains 1 protein kinase domain.
翻訳後修飾	Autophosphorylated.
細胞内局在	Cytoplasm.

画像



All lanes : Anti-HIPK4 antibody (ab69565) at 1/500 dilution

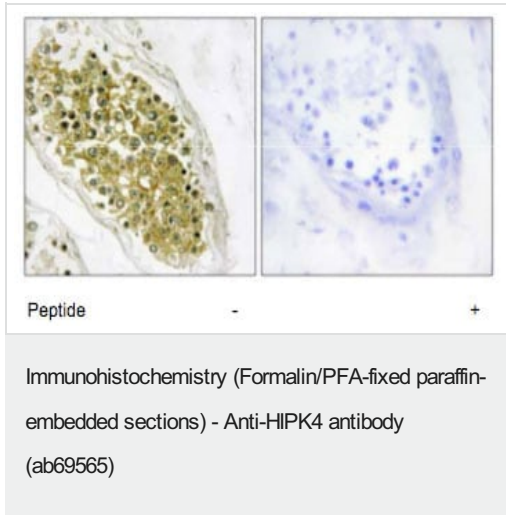
Lane 1 : extracts from HUVEC cells

Lane 2 : extracts from HUVEC cells with immunizing peptide at 10 μ g

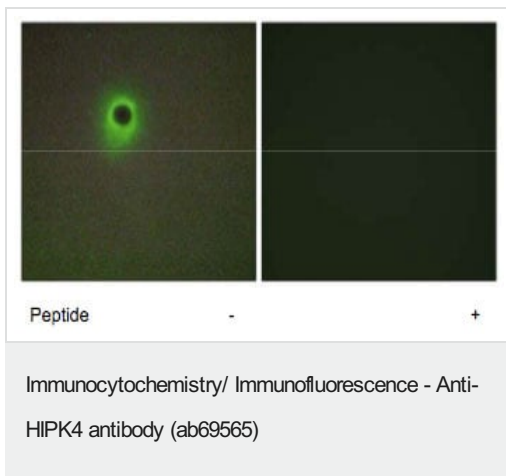
Lysates/proteins at 30 μ g per lane.

Predicted band size: 69 kDa

Observed band size: 69 kDa



Immunohistochemistry analysis of paraffin-embedded human testis tissue using 1:50 ab69565. For the right hand image the antibody was pre-incubated with the immunizing peptide.



Immunofluorescence analysis of A549 cells, using 1:500 ab69565. For the right hand image, the antibody was pre-incubated with the immunizing peptide.

Please note: All products are "FOR RESEARCH USE ONLY. NOT FOR USE IN DIAGNOSTIC PROCEDURES"

Our Abpromise to you: Quality guaranteed and expert technical support

- Replacement or refund for products not performing as stated on the datasheet
- Valid for 12 months from date of delivery
- Response to your inquiry within 24 hours
- We provide support in Chinese, English, French, German, Japanese and Spanish
- Extensive multi-media technical resources to help you
- We investigate all quality concerns to ensure our products perform to the highest standards

If the product does not perform as described on this datasheet, we will offer a refund or replacement. For full details of the Abpromise, please visit <https://www.abcam.co.jp/abpromise> or contact our technical team.

Terms and conditions

- Guarantee only valid for products bought direct from Abcam or one of our authorized distributors