


Anti-HIP55 antibody ab77147

画像数 2

製品の概要

製品名	Anti-HIP55 antibody
製品の詳細	Rabbit polyclonal to HIP55
由来種	Rabbit
アプリケーション	適用あり: ICC/IF, WB
種交差性	交差種: Human 交差が予測される動物種: Mouse, Rat, Cow, Orangutan 
免疫原	Synthetic peptide corresponding to Human HIP55 aa 400 to the C-terminus (C terminal) conjugated to keyhole limpet haemocyanin. (Peptide available as ab91635)
ポジティブ・コントロール	This antibody gave a positive signal in the following human whole cell lysates: SHSY-5Y; SK N SH; SK N BE; HeLa.
特記事項	<p>The Life Science industry has been in the grips of a reproducibility crisis for a number of years. Abcam is leading the way in addressing this with our range of recombinant monoclonal antibodies and knockout edited cell lines for gold-standard validation. Please check that this product meets your needs before purchasing.</p> <p>If you have any questions, special requirements or concerns, please send us an inquiry and/or contact our Support team ahead of purchase. Recommended alternatives for this product can be found below, along with publications, customer reviews and Q&As</p>

製品の特性

製品の状態	Liquid
保存方法	Shipped at 4°C. Store at +4°C short term (1-2 weeks). Upon delivery aliquot. Store at -20°C or -80°C. Avoid freeze / thaw cycle.
バッファー	pH: 7.40 Preservative: 0.02% Sodium azide Constituent: PBS
	Batches of this product that have a concentration < 1mg/ml may have BSA added as a stabilising agent. If you would like information about the formulation of a specific lot, please contact our scientific support team who will be happy to help.

精製度	Immunogen affinity purified
ポリ/モノ	ポリクローナル
アイソタイプ	IgG

アプリケーション

The Abpromise guarantee **Abpromise保証は、次のテスト済みアプリケーションにおけるab77147の使用に適用されます**
 アプリケーションノートには、推奨の開始希釈率がありますが、適切な希釈率につきましてはご検討ください。

アプリケーション	Abreviews	特記事項
ICC/IF		
WB		

追加情報

ICC/IF: Use at a concentration of 5 µg/ml.
 WB: Use at a concentration of 1 µg/ml. Detects a band of approximately 55 kDa (predicted molecular weight: 48 kDa).

Not yet tested in other applications.
 Optimal dilutions/concentrations should be determined by the end user.

ターゲット情報

機能

Actin-binding adapter protein. May act as a common effector of antigen receptor-signaling pathways in leukocytes. Its association with dynamin suggests that it may also connect the actin cytoskeleton to endocytic function. Acts as a key component of the immunological synapse that regulates T-cell activation by bridging TCRs and the actin cytoskeleton to gene activation and endocytic processes. Binds to F-actin but is not involved in actin polymerization, capping or bundling. Does not bind G-actin.

配列類似性

Belongs to the ABP1 family.
 Contains 1 ADF-H domain.
 Contains 1 SH3 domain.

ドメイン

The SH3 domain mediates interaction with SHANK2, SHANK3 and PRAM1.

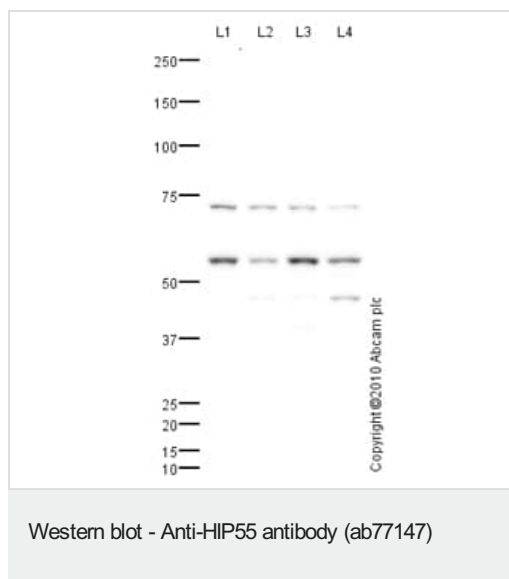
翻訳後修飾

Degraded by caspases during apoptosis.

細胞内局在

Cytoplasm > cytoskeleton. Cell projection > lamellipodium. Cortical cytoskeleton. Associates with lamellipodial actin.

画像



All lanes : Anti-HIP55 antibody (ab77147) at 1 µg/ml

Lane 1 : SHSY-5Y (Human neuroblastoma cell line) Whole Cell Lysate

Lane 2 : SK N BE (Human neuroblastoma) Whole Cell Lysate

Lane 3 : SK N SH (Human neuroblastoma) Whole Cell Lysate

Lane 4 : HeLa (Human epithelial carcinoma cell line) Whole Cell Lysate

Lysates/proteins at 10 µg per lane.

Secondary

All lanes : Goat polyclonal to Rabbit IgG - H&L - Pre-Adsorbed (HRP) at 1/3000 dilution

Developed using the ECL technique.

Performed under reducing conditions.

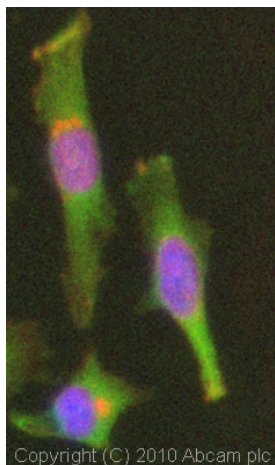
Predicted band size: 48 kDa

Observed band size: 55 kDa

Additional bands at: 48 kDa, 72 kDa. We are unsure as to the identity of these extra bands.

Exposure time: 5 minutes

The 55 kDa band observed is comparable to the molecular weight seen with other commercially available antibodies to Human Drebrin-like protein (HIP 55).



Immunocytochemistry/ Immunofluorescence - Anti-HIP55 antibody (ab77147)

ICC/IF image of ab77147 stained HeLa cells. The cells were 4% PFA fixed (10 min) and then incubated in 1%BSA / 10% normal goat serum / 0.3M glycine in 0.1% PBS-Tween for 1h to permeabilise the cells and block non-specific protein-protein interactions. The cells were then incubated with the antibody (ab77147, 5µg/ml) overnight at +4°C. The secondary antibody (green) was Alexa Fluor® 488 goat anti-rabbit IgG (H+L) used at a 1/1000 dilution for 1h. Alexa Fluor® 594 WGA was used to label plasma membranes (red) at a 1/200 dilution for 1h. DAPI was used to stain the cell nuclei (blue) at a concentration of 1.43µM. This antibody also gave a positive result in 4% PFA fixed (10 min) Hek293, HepG2 and MCF7 cells at 5µg/ml, and in 100% methanol fixed (5 min) HeLa, Hek293, HepG2 and MCF7 cells at 5µg/ml.

Please note: All products are "FOR RESEARCH USE ONLY. NOT FOR USE IN DIAGNOSTIC PROCEDURES"

Our Abpromise to you: Quality guaranteed and expert technical support

- Replacement or refund for products not performing as stated on the datasheet
- Valid for 12 months from date of delivery
- Response to your inquiry within 24 hours
- We provide support in Chinese, English, French, German, Japanese and Spanish
- Extensive multi-media technical resources to help you
- We investigate all quality concerns to ensure our products perform to the highest standards

If the product does not perform as described on this datasheet, we will offer a refund or replacement. For full details of the Abpromise, please visit <https://www.abcam.co.jp/abpromise> or contact our technical team.

Terms and conditions

- Guarantee only valid for products bought direct from Abcam or one of our authorized distributors