


Anti-HIP55 antibody ab2836

6 References [画像数 2](#)

製品の概要

| | |
|----------|--|
| 製品名 | Anti-HIP55 antibody |
| 製品の詳細 | Goat polyclonal to HIP55 |
| 由来種 | Goat |
| アプリケーション | 適用あり: WB |
| 種交差性 | 交差種: Mouse, Human 交差が予測される動物種: Rat, Dog  |
| 免疫原 | Synthetic peptide corresponding to Human HIP55 aa 1-100 (N terminal). (NP_001014436.1; NP_001116428.1) Database link: NP_054782.2 |

 [Run BLAST with](#)

 [Run BLAST with](#)

特記事項

The Life Science industry has been in the grips of a reproducibility crisis for a number of years. Abcam is leading the way in addressing this with our range of recombinant monoclonal antibodies and knockout edited cell lines for gold-standard validation. Please check that this product meets your needs before purchasing.

If you have any questions, special requirements or concerns, please send us an inquiry and/or contact our Support team ahead of purchase. Recommended alternatives for this product can be found below, along with publications, customer reviews and Q&As

製品の特性

| | |
|----------|---|
| 製品の状態 | Liquid |
| 保存方法 | Shipped at 4°C. Upon delivery aliquot and store at -20°C or -80°C. Avoid repeated freeze / thaw cycles. |
| バッファー | pH: 7.30 Preservative: 0.02% Sodium azide Constituents: Tris buffered saline, 0.5% BSA |
| 精製度 | Immunogen affinity purified |
| 特記事項(精製) | Purified from goat serum by ammonium sulphate precipitation followed by antigen affinity chromatography using the immunizing peptide. |
| ポリ/モノ | ポリクローナル |
| アイソタイプ | IgG |

アプリケーション

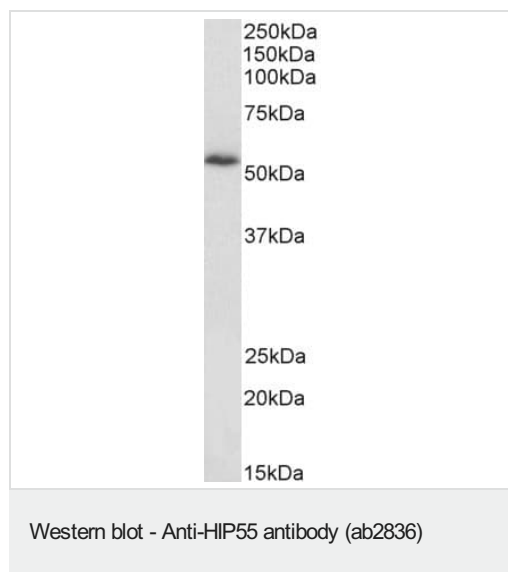
The Abpromise guarantee **Abpromise保証は、次のテスト済みアプリケーションにおけるab2836の使用に適用されます**
アプリケーションノートには、推奨の開始希釈率がありますが、適切な希釈率につきましてはご検討ください。

| アプリケーション | Abreviews | 特記事項 |
|----------|-----------|--|
| WB | | Use a concentration of 0.03 - 0.1 µg/ml. Detects a band of approximately 55 kDa (predicted molecular weight: 49 kDa). 1 hour primary incubation is recommended for this product. |

ターゲット情報

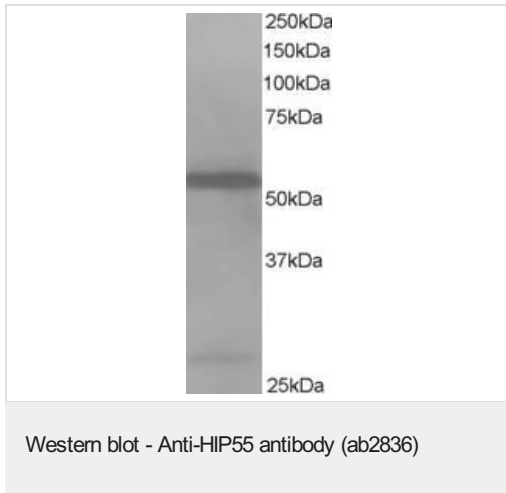
| | |
|-------|--|
| 機能 | Actin-binding adapter protein. May act as a common effector of antigen receptor-signaling pathways in leukocytes. Its association with dynamin suggests that it may also connect the actin cytoskeleton to endocytic function. Acts as a key component of the immunological synapse that regulates T-cell activation by bridging TCRs and the actin cytoskeleton to gene activation and endocytic processes. Binds to F-actin but is not involved in actin polymerization, capping or bundling. Does not bind G-actin. |
| 配列類似性 | Belongs to the ABP1 family. Contains 1 ADF-H domain. Contains 1 SH3 domain. |
| ドメイン | The SH3 domain mediates interaction with SHANK2, SHANK3 and PRAM1. |
| 翻訳後修飾 | Degraded by caspases during apoptosis. |
| 細胞内局在 | Cytoplasm > cytoskeleton. Cell projection > lamellipodium. Cortical cytoskeleton. Associates with lamellipodial actin. |

画像



Anti-HIP55 antibody (ab2836) at 1 µg/ml + 3T3 cell lysate at 35 µg

Predicted band size: 49 kDa



ab2836 staining (1 µg/ml) of Jurkat lysate (RIPA buffer, 35 µg total protein per lane). Primary incubated for 1 hour. Detected by western blot using chemiluminescence.

Please note: All products are "FOR RESEARCH USE ONLY. NOT FOR USE IN DIAGNOSTIC PROCEDURES"

Our Abpromise to you: Quality guaranteed and expert technical support

- Replacement or refund for products not performing as stated on the datasheet
- Valid for 12 months from date of delivery
- Response to your inquiry within 24 hours
- We provide support in Chinese, English, French, German, Japanese and Spanish
- Extensive multi-media technical resources to help you
- We investigate all quality concerns to ensure our products perform to the highest standards

If the product does not perform as described on this datasheet, we will offer a refund or replacement. For full details of the Abpromise, please visit <https://www.abcam.co.jp/abpromise> or contact our technical team.

Terms and conditions

- Guarantee only valid for products bought direct from Abcam or one of our authorized distributors