

Anti-HIF1AN/FIH-1 antibody [EPR3658] ab92498

リコンビナント **RabMAb**

10 References **画像数 6**

製品の概要

製品名	Anti-HIF1AN/FIH-1 antibody [EPR3658]
製品の詳細	Rabbit monoclonal [EPR3658] to HIF1AN/FIH-1
由来種	Rabbit
アプリケーション	適用あり: WB, IHC-P, ICC/IF, Flow Cyt (Intra) 適用なし: IP
種交差性	交差種: Human
免疫原	Synthetic peptide within Human HIF1AN/FIH-1 aa 1-100. The exact sequence is proprietary.
ポジティブ・コントロール	Jurkat, 293T and A375 cell lysates; Human breast carcinoma and brain tissue; HeLa cells.
特記事項	<p>This product is a recombinant monoclonal antibody, which offers several advantages including:</p> <ul style="list-style-type: none"> - High batch-to-batch consistency and reproducibility - Improved sensitivity and specificity - Long-term security of supply - Animal-free production <p>For more information see here.</p> <p>Our RabMAb[®] technology is a patented hybridoma-based technology for making rabbit monoclonal antibodies. For details on our patents, please refer to RabMAb[®] patents.</p> <p>Mouse, Rat: We have preliminary internal testing data to indicate this antibody may not react with these species. Please contact us for more information.</p>

製品の特性

製品の状態	Liquid
保存方法	Shipped at 4°C. Upon delivery aliquot and store at -20°C. Avoid repeated freeze / thaw cycles.
バッファー	<p>pH: 7.20</p> <p>Preservative: 0.05% Sodium azide</p> <p>Constituents: 0.1% BSA, 40% Glycerol (glycerin, glycerine), 9.85% Tris glycine, 50% Tissue culture supernatant</p>
精製度	Protein A purified
ポリ/モノ	モノクローナル

クローン名	EPR3658
アイソタイプ	IgG

アプリケーション

The Abpromise guarantee **Abpromise保証は、** 次のテスト済みアプリケーションにおけるab92498の使用に適用されます
 アプリケーションノートには、推奨の開始希釈率がありますが、適切な希釈率につきましてはご検討ください。

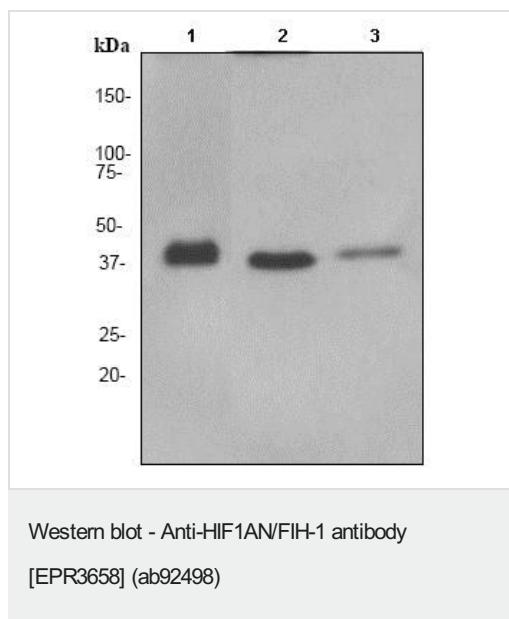
アプリケーション	Abreviews	特記事項
WB		1/5000 - 1/10000. Detects a band of approximately 40 kDa (predicted molecular weight: 40 kDa).
IHC-P		1/250 - 1/500. Perform heat mediated antigen retrieval with citrate buffer pH 6 before commencing with IHC staining protocol.
ICC/IF		1/100 - 1/250.
Flow Cyt (Intra)		1/1000. ab172730 - Rabbit monoclonal IgG, is suitable for use as an isotype control with this antibody.

追加情報 Is unsuitable for IP.

ターゲット情報

機能	Hydroxylates HIF-1 alpha at 'Asp-803' in the C-terminal transactivation domain (CAD). Functions as an oxygen sensor and, under normoxic conditions, the hydroxylation prevents interaction of HIF-1 with transcriptional coactivators including Cbp/p300-interacting transactivator. Involved in transcriptional repression through interaction with HIF1A, VHL and histone deacetylases.
配列類似性	Contains 1 JmjC domain.
細胞内局在	Nucleus.

画像



All lanes : Anti-HIF1AN/FIH-1 antibody [EPR3658] (ab92498) at 1/5000 dilution

Lane 1 : Jurkat (Human T cell leukemia cell line from peripheral blood) whole cell lysate

Lane 2 : HEK-293T (Human epithelial cell line from embryonic kidney transformed with large T antigen) whole cell lysate

Lane 3 : A-375 (Human malignant melanoma cell line) whole cell lysate

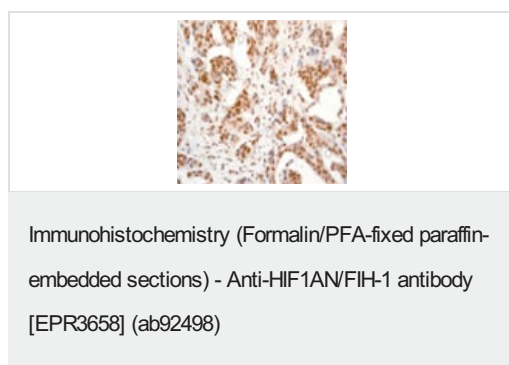
Lysates/proteins at 10 µg per lane.

Secondary

All lanes : Goat anti-rabbit HRP conjugated at 1/2000 dilution

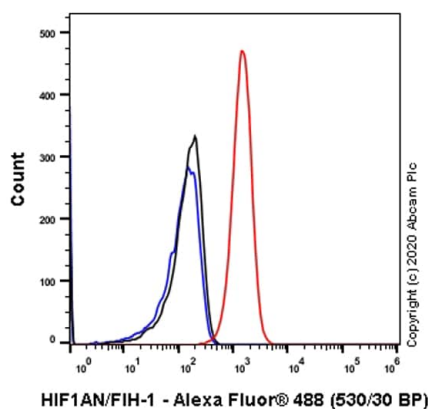
Predicted band size: 40 kDa

Observed band size: 40 kDa



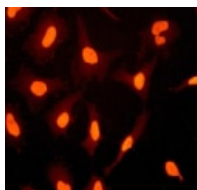
ab92498 at 1/250 dilution staining HIF1AN/FIH-1 in Human breast carcinoma by Immunohistochemistry, Paraffin-embedded tissue.

Perform heat mediated antigen retrieval with citrate buffer pH 6 before commencing with IHC staining protocol.



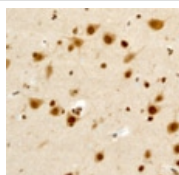
Flow Cytometry (Intracellular) - Anti-HIF1AN/FIH-1 antibody [EPR3658] (ab92498)

Flow Cytometry analysis of HeLa (Human cervix adenocarcinoma epithelial cell) cells labeling HIF1AN/FIH-1 with purified ab92498 at 1/1000 dilution (1 μ g/mL) (Red). Cells were fixed with 4% Paraformaldehyde and permeabilised with 90% Methanol. A Goat anti rabbit IgG (Alexa Fluor® 488, [ab150077](#)) secondary antibody was used at 1/2000. Isotype control - Rabbit monoclonal IgG (Black). Unlabeled control - Cell without incubation with primary antibody and secondary antibody (Blue).



Immunocytochemistry/ Immunofluorescence - Anti-HIF1AN/FIH-1 antibody [EPR3658] (ab92498)

ab92498 at 1/100 dilution staining HIF1AN/FIH-1 in HeLa cells by Immunofluorescence.



Immunohistochemistry (Formalin/PFA-fixed paraffin-embedded sections) - Anti-HIF1AN/FIH-1 antibody [EPR3658] (ab92498)

ab92498 at 1/250 dilution staining HIF1AN/FIH-1 in Human brain by Immunohistochemistry, Paraffin-embedded tissue.

Perform heat mediated antigen retrieval with citrate buffer pH 6 before commencing with IHC staining protocol.

Why choose a recombinant antibody?



Research with confidence
Consistent and reproducible results



Long-term and scalable supply
Recombinant technology



Success from the first experiment
Confirmed specificity



Ethical standards compliant
Animal-free production

Anti-HIF1AN/FIH-1 antibody [EPR3658] (ab92498)

Please note: All products are "FOR RESEARCH USE ONLY. NOT FOR USE IN DIAGNOSTIC PROCEDURES"

Our Abpromise to you: Quality guaranteed and expert technical support

- Replacement or refund for products not performing as stated on the datasheet
- Valid for 12 months from date of delivery
- Response to your inquiry within 24 hours
- We provide support in Chinese, English, French, German, Japanese and Spanish
- Extensive multi-media technical resources to help you
- We investigate all quality concerns to ensure our products perform to the highest standards

If the product does not perform as described on this datasheet, we will offer a refund or replacement. For full details of the Abpromise, please visit <https://www.abcam.co.jp/abpromise> or contact our technical team.

Terms and conditions

- Guarantee only valid for products bought direct from Abcam or one of our authorized distributors