


### Anti-hHR23b antibody ab86781

**3 References**   **画像数 5**

#### 製品の概要

製品名	Anti-hHR23b antibody
製品の詳細	Rabbit polyclonal to hHR23b
由来種	Rabbit
アプリケーション	<b>適用あり:</b> WB, IP, IHC-P
種交差性	<b>交差種:</b> Mouse, Rat, Human <b>交差が予測される動物種:</b> Rabbit, Horse, Chicken, Guinea pig, Cow, Dog, Pig, Chimpanzee, Rhesus monkey, Gorilla, Tilapia, Orangutan, Platypus 
免疫原	Synthetic peptide corresponding to Human hHR23b aa 350-450. Database link: <a href="#">P54727</a>
ポジティブ・コントロール	HeLa whole cell lysate ( <a href="#">ab150035</a> ) NIH3T3 whole cell lysate
特記事項	<p>The Life Science industry has been in the grips of a reproducibility crisis for a number of years. Abcam is leading the way in addressing this with our range of recombinant monoclonal antibodies and knockout edited cell lines for gold-standard validation. Please check that this product meets your needs before purchasing.</p> <p>If you have any questions, special requirements or concerns, please send us an inquiry and/or contact our Support team ahead of purchase. Recommended alternatives for this product can be found below, along with publications, customer reviews and Q&amp;As</p>

#### 製品の特性

製品の状態	Liquid
保存方法	Shipped at 4°C. Upon delivery aliquot and store at -20°C. Avoid freeze / thaw cycles.
バッファー	pH: 6.8 Preservative: 0.09% Sodium azide Constituents: 0.1% BSA, Tris buffered saline
精製度	Immunogen affinity purified
ポリ/モノ	ポリクローナル
アイソタイプ	IgG

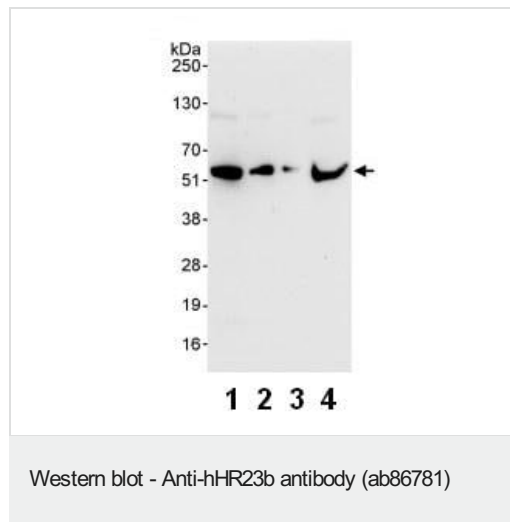
#### アプリケーション

**The Abpromise guarantee**      **Abpromise保証は、次のテスト済みアプリケーションにおけるab86781の使用に適用されます**  
 アプリケーションノートには、推奨の開始希釈率がありますが、適切な希釈率につきましてはご検討ください。

アプリケーション	Abreviews	特記事項
WB		1/2000 - 1/10000. Predicted molecular weight: 43 kDa.
IP		Use at 10 µg/mg of lysate.
IHC-P		1/500 - 1/2000. Perform heat mediated antigen retrieval with citrate buffer pH 6 before commencing with IHC staining protocol.

## ターゲット情報

<b>機能</b>	<p>Multiubiquitin chain receptor involved in modulation of proteasomal degradation. Binds to polyubiquitin chains. Proposed to be capable to bind simultaneously to the 26S proteasome and to polyubiquitinated substrates and to deliver ubiquitinated proteins to the proteasome. May play a role in endoplasmatic reticulum-associated degradation (ERAD) of misfolded glycoproteins by association with PNGase and delivering deglycosylated proteins to the proteasome. Involved in global genome nucleotide excision repair (GG-NER) by acting as component of the XPC complex. Cooperatively with CETN2 appears to stabilize XPC. May protect XPC from proteasomal degradation.</p> <p>The XPC complex is proposed to represent the first factor bound at the sites of DNA damage and together with other core recognition factors, XPA, RPA and the TFIIH complex, is part of the pre-precision (or initial recognition) complex. The XPC complex recognizes a wide spectrum of damaged DNA characterized by distortions of the DNA helix such as single-stranded loops, mismatched bubbles or single stranded overhangs. The orientation of XPC complex binding appears to be crucial for inducing a productive NER. XPC complex is proposed to recognize and to interact with unpaired bases on the undamaged DNA strand which is followed by recruitment of the TFIIH complex and subsequent scanning for lesions in the opposite strand in a 5'-to-3' direction by the NER machinery. Cyclobutane pyrimidine dimers (CPDs) which are formed upon UV-induced DNA damage escape detection by the XPC complex due to a low degree of structural perturbation. Instead they are detected by the UV-DDB complex which in turn recruits and cooperates with the XPC complex in the respective DNA repair. In vitro, the XPC:RAD23B dimer is sufficient to initiate NER; it preferentially binds to cisplatin and UV-damaged double-stranded DNA and also binds to a variety of chemically and structurally diverse DNA adducts. XPC:RAD23B contacts DNA both 5' and 3' of a cisplatin lesion with a preference for the 5' side. XPC:RAD23B induces a bend in DNA upon binding. XPC:RAD23B stimulates the activity of DNA glycosylases TDG and SMUG1.</p>
<b>配列類似性</b>	<p>Belongs to the RAD23 family.</p> <p>Contains 1 ST11 domain.</p> <p>Contains 2 UBA domains.</p> <p>Contains 1 ubiquitin-like domain.</p>
<b>ドメイン</b>	<p>The ubiquitin-like domain mediates interaction with ATXN3.</p>
<b>細胞内局在</b>	<p>Nucleus. Cytoplasm. The intracellular distribution is cell cycle dependent. Localized to the nucleus and the cytoplasm during G1 phase. Nuclear levels decrease during S-phase; upon entering mitosis, relocalizes in the cytoplasm without association with chromatin.</p>



**All lanes :** Anti-hHR23b antibody (ab86781) at 0.04 µg/ml

**Lane 1 :** HeLa whole cell lysate at 50 µg

**Lane 2 :** HeLa whole cell lysate at 15 µg

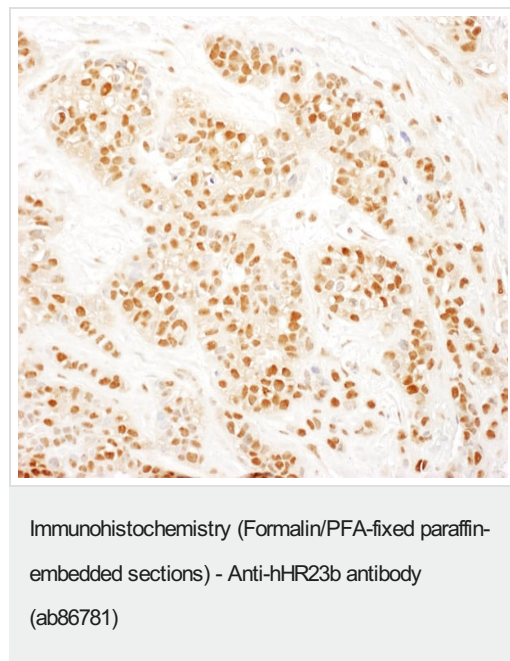
**Lane 3 :** HeLa whole cell lysate at 5 µg

**Lane 4 :** NIH3T3 whole cell lysate at 50 µg

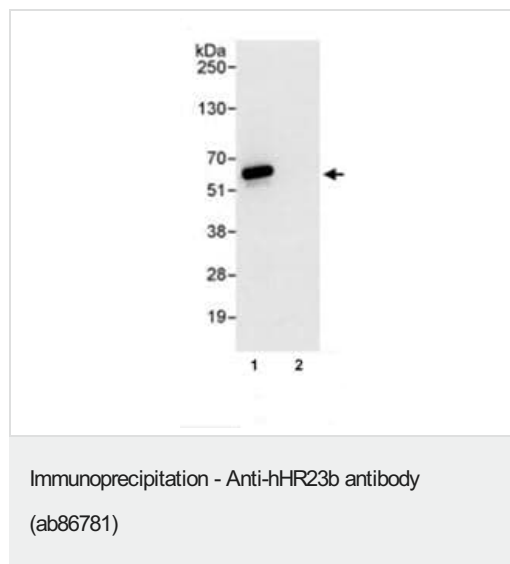
Developed using the ECL technique.

**Predicted band size:** 43 kDa

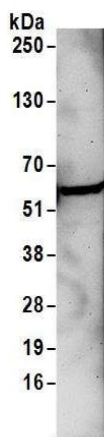
**Exposure time:** 30 seconds



Immunohistochemistry (Formalin/PFA-fixed paraffin-embedded sections) analysis of human breast carcinoma tissue labelling hHR23b with ab86781 at 1/1000 (0.2 µg/ml). Detection: DAB.



1 mg HeLa whole cell lysate was immunoprecipitated with 10 µg ab86781 (lane 1) or control IgG (lane 2). 20% of the immunoprecipitate was subjected to Western blotting and labelled with ab86781 at 0.4 µg/ml. Bands were detected by chemiluminescence with an exposure time of 3 seconds.

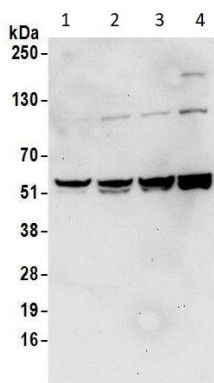


Western blot - Anti-hHR23b antibody (ab86781)

Anti-hHR23b antibody (ab86781) at 0.2 µg/ml + C6 (Rat glial tumor cell line) whole cell lysate at 50 µg

**Predicted band size:** 43 kDa

**Exposure time:** 3 minutes



Western blot - Anti-hHR23b antibody (ab86781)

**All lanes :** Anti-hHR23b antibody (ab86781) at 0.2 µg/ml

**Lane 1 :** NIH3T3 whole cell lysate

**Lane 2 :** TCMK-1 whole cell lysate

**Lane 3 :** 4T1 whole cell lysate

**Lane 4 :** CT26.WT whole cell lysate

Lysates/proteins at 50 µg per lane.

**Predicted band size:** 43 kDa

**Exposure time:** 30 seconds

**Please note:** All products are "FOR RESEARCH USE ONLY. NOT FOR USE IN DIAGNOSTIC PROCEDURES"

### Our Abpromise to you: Quality guaranteed and expert technical support

- Replacement or refund for products not performing as stated on the datasheet
- Valid for 12 months from date of delivery
- Response to your inquiry within 24 hours
- We provide support in Chinese, English, French, German, Japanese and Spanish
- Extensive multi-media technical resources to help you
- We investigate all quality concerns to ensure our products perform to the highest standards

If the product does not perform as described on this datasheet, we will offer a refund or replacement. For full details of the Abpromise, please visit <https://www.abcam.co.jp/abpromise> or contact our technical team.

## Terms and conditions

---

- Guarantee only valid for products bought direct from Abcam or one of our authorized distributors