


### Anti-Hhip antibody ab39208

★★★★★ [1 Abreviews](#) [5 References](#) [画像数 1](#)

#### 製品の概要

製品名	Anti-Hhip antibody
製品の詳細	Rabbit polyclonal to Hhip
由来種	Rabbit
アプリケーション	<b>適用あり:</b> WB
種交差性	<b>交差種:</b> Mouse, Human <b>交差が予測される動物種:</b> Cow 
免疫原	Synthetic peptide conjugated to KLH derived from within residues 150 - 250 of Human Hhip.Immunogen <a href="#">の所有権に関して</a> (Peptide available as <a href="#">ab39947</a> .)
ポジティブ・コントロール	This antibody gave a positive signal in the following lysates: HeLa Whole Cell; Mouse Heart; Mouse Liver; Mouse Pancreas.
特記事項	<p>The Life Science industry has been in the grips of a reproducibility crisis for a number of years. Abcam is leading the way in addressing this with our range of recombinant monoclonal antibodies and knockout edited cell lines for gold-standard validation. Please check that this product meets your needs before purchasing.</p> <p>If you have any questions, special requirements or concerns, please send us an inquiry and/or contact our Support team ahead of purchase. Recommended alternatives for this product can be found below, along with publications, customer reviews and Q&amp;As</p>

#### 製品の特性

製品の状態	Liquid
保存方法	Shipped at 4°C. Store at +4°C short term (1-2 weeks). Upon delivery aliquot. Store at -20°C or -80°C. Avoid freeze / thaw cycle.
バッファー	pH: 7.40 Preservative: 0.02% Sodium azide Constituent: PBS
精製度	Batches of this product that have a concentration < 1mg/ml may have BSA added as a stabilising agent. If you would like information about the formulation of a specific lot, please contact our scientific support team who will be happy to help. Immunogen affinity purified

ポリ/モノ  
アイソタイプ

ポリクローナル  
IgG

## アプリケーション

**The Abpromise guarantee**      **Abpromise保証は、次のテスト済みアプリケーションにおけるab39208の使用に適用されます**  
アプリケーションノートには、推奨の開始希釈率がありますが、適切な希釈率につきましてはご検討ください。

アプリケーション	Abreviews	特記事項
WB	★★★★☆ (1)	Use a concentration of 1 µg/ml. Detects a band of approximately 80 kDa (predicted molecular weight: 79 kDa).

## ターゲット情報

**機能**      Modulates hedgehog signaling in several cell types including brain and lung through direct interaction with members of the hedgehog family.

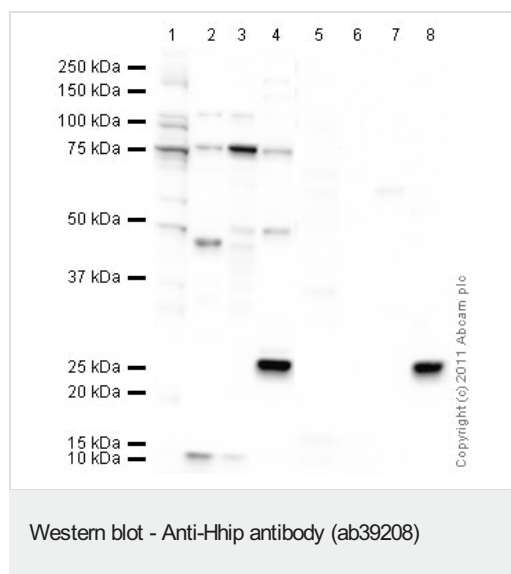
**組織特異性**      Widely expressed in fetal and adult tissues. Highest expression in adult heart, liver and pancreas, and in fetal kidney.

**配列類似性**      Belongs to the HHIP family.  
Contains 2 EGF-like domains.

**ドメイン**      A flexible loop interacts with the SHH zinc binding site and contributes to zinc binding.

**細胞内局在**      Cytoplasm and Cell membrane. Secreted. The last 22 C-terminal amino acids may participate in cell membrane attachment.

## 画像



**All lanes :** Anti-Hhip antibody (ab39208) at 1 µg/ml

**Lane 1 :** HeLa (Human epithelial carcinoma cell line) Whole Cell Lysate

**Lane 2 :** Heart (Mouse) Tissue Lysate

**Lane 3 :** Liver (Mouse) Tissue Lysate

**Lane 4 :** Pancreas (Mouse) Tissue Lysate

**Lane 5 :** HeLa (Human epithelial carcinoma cell line) Whole Cell Lysate with Human Hhip peptide (**ab39947**) at 1 µg/ml

**Lane 6 :** Heart (Mouse) Tissue Lysate with Human Hhip peptide (**ab39947**) at 1 µg/ml

**Lane 7 :** Liver (Mouse) Tissue Lysate with Human Hhip peptide (**ab39947**) at 1 µg/ml

**Lane 8 :** Pancreas (Mouse) Tissue Lysate with Human Hhip peptide (**ab39947**) at 1 µg/ml

Lysates/proteins at 10 µg per lane.

### **Secondary**

**All lanes** : Goat polyclonal to Rabbit IgG - H&L - Pre-Adsorbed (HRP) at 1/3000 dilution

Developed using the ECL technique.

Performed under reducing conditions.

**Predicted band size:** 79 kDa

**Observed band size:** 80 kDa

**Additional bands at:** 100 kDa, 45 kDa, 47 kDa. We are unsure as to the identity of these extra bands.

**Exposure time:** 5 minutes

**Please note:** All products are "FOR RESEARCH USE ONLY. NOT FOR USE IN DIAGNOSTIC PROCEDURES"

### **Our Abpromise to you: Quality guaranteed and expert technical support**

---

- Replacement or refund for products not performing as stated on the datasheet
- Valid for 12 months from date of delivery
- Response to your inquiry within 24 hours
  
- We provide support in Chinese, English, French, German, Japanese and Spanish
- Extensive multi-media technical resources to help you
- We investigate all quality concerns to ensure our products perform to the highest standards

If the product does not perform as described on this datasheet, we will offer a refund or replacement. For full details of the Abpromise, please visit <https://www.abcam.co.jp/abpromise> or contact our technical team.

### **Terms and conditions**

---

- Guarantee only valid for products bought direct from Abcam or one of our authorized distributors