

### Anti-Hes1 antibody [OTI2D2] ab119776

★★★★★ [2 Abreviews](#) [13 References](#) [画像数 6](#)

#### 製品の概要

製品名	Anti-Hes1 antibody [OTI2D2]
製品の詳細	Mouse monoclonal [OTI2D2] to Hes1
由来種	Mouse
アプリケーション	<b>適用あり:</b> Flow Cyt (Intra), WB, IHC-P, ICC/IF
種交差性	<b>交差種:</b> Human, Recombinant fragment
免疫原	Recombinant full length Human Hes1 produced in HEK293T cells (NP_005515).
ポジティブ・コントロール	WB: HEK293T cell lysate transfected with pCMV6-ENTRY Hes1 cDNA. ICC/IF: MCF7 cell lysates; COS7 cells transiently transfected by pCMV6-ENTRY Hes1 cDNA. Flow Cyt (Intra): Jurkat cells. IHC-P: Human thyroid, thyroid carcinoma and bladder carcinoma tissues.
特記事項	<p>Dilute in PBS (pH7.3) before use.</p> <p>This product was changed from ascites to tissue culture supernatant on the 4<sup>th</sup> of June 2019. Please note that the dilutions may need to be adjusted accordingly. If you have any questions, please do not hesitate to contact our scientific support team.</p> <p>The Life Science industry has been in the grips of a reproducibility crisis for a number of years. Abcam is leading the way in addressing this with our range of recombinant monoclonal antibodies and knockout edited cell lines for gold-standard validation. Please check that this product meets your needs before purchasing.</p> <p>If you have any questions, special requirements or concerns, please send us an inquiry and/or contact our Support team ahead of purchase. Recommended alternatives for this product can be found below, along with publications, customer reviews and Q&amp;As</p>

#### 製品の特性

製品の状態	Liquid
保存方法	Shipped at 4°C. Upon delivery aliquot and store at -20°C. Avoid repeated freeze / thaw cycles.
バッファー	<p>pH: 7.30</p> <p>Preservative: 0.02% Sodium azide</p> <p>Constituents: PBS, 1% BSA, 50% Glycerol</p>
精製度	Tissue culture supernatant
特記事項 (精製)	Purified from TCS.

ポリ/モノ	モノクローナル
クローン名	OT12D2
アイソタイプ	IgG1

## アプリケーション

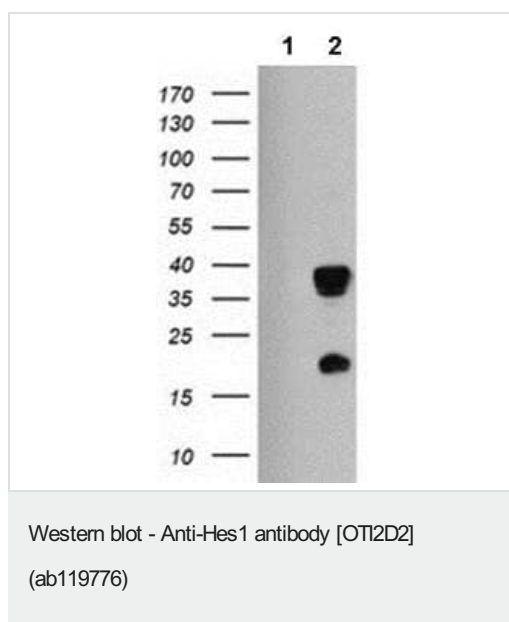
The Abpromise guarantee **Abpromise保証は、次のテスト済みアプリケーションにおけるab119776の使用に適用されます**  
 アプリケーションノートには、推奨の開始希釈率がありますが、適切な希釈率につきましてはご検討ください。

アプリケーション	Abreviews	特記事項
Flow Cyt (Intra)		1/100. <b>ab170190</b> - Mouse monoclonal IgG1, is suitable for use as an isotype control with this antibody.
WB		Use at an assay dependent concentration. Predicted molecular weight: 30 kDa.
IHC-P		Use at an assay dependent concentration.
ICC/IF	★★★★★ (2)	Use at an assay dependent concentration.

## ターゲット情報

機能	Transcriptional repressor of genes that require a bHLH protein for their transcription. May act as a negative regulator of myogenesis by inhibiting the functions of MYOD1 and ASH1. Binds DNA on N-box motifs: 5'-CACNAG-3' with high affinity and on E-box motifs: 5'-CANNTG-3' with low affinity.
配列類似性	Contains 1 basic helix-loop-helix (bHLH) domain. Contains 1 Orange domain.
ドメイン	Has a particular type of basic domain (presence of a helix-interrupting proline) that binds to the N-box (CACNAG), rather than the canonical E-box (CANNTG). The C-terminal WRPW motif is a transcriptional repression domain necessary for the interaction with Groucho/TLE family members, transcriptional corepressors recruited to specific target DNA by Hairy-related proteins. The bHLH, as well as cooperation between the central Orange domain and the C-terminal WRPW motif, is required for transcriptional repressor activity.
細胞内局在	Nucleus.

## 画像



**All lanes** : Anti-Hes1 antibody [OT12D2] (ab119776) at 1/2000 dilution

**Lane 1** : HEK293T cell lysate transfected with pCMV6-ENTRY control cDNA

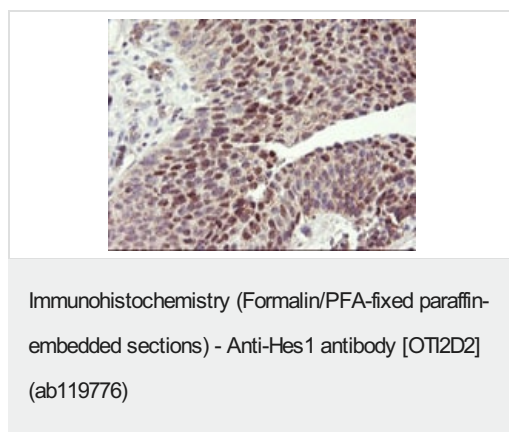
**Lane 2** : HEK293T cell lysate transfected with pCMV6-ENTRY Hes1 cDNA

Lysates/proteins at 5 µg per lane.

**Predicted band size:** 30 kDa

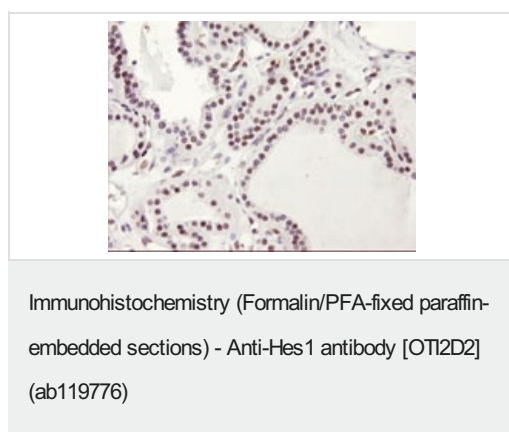
HEK293T cell lysates were generated from transient transfection of the cDNA clone (RC211709)

This image was generated using the ascites version of the product.



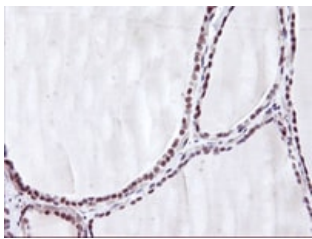
ab119776, at 1/150 dilution, staining Hes1 in paraffin-embedded Human bladder carcinoma tissue by Immunohistochemistry.

This image was generated using the ascites version of the product.



ab119776, at 1/150 dilution, staining Hes1 in paraffin-embedded Human thyroid carcinoma tissue by Immunohistochemistry.

This image was generated using the ascites version of the product.



Immunohistochemistry (Formalin/PFA-fixed paraffin-embedded sections) - Anti-Hes1 antibody [OT12D2] (ab119776)

ab119776, at 1/150 dilution, staining Hes1 in paraffin-embedded Human thyroid tissue by Immunohistochemistry.

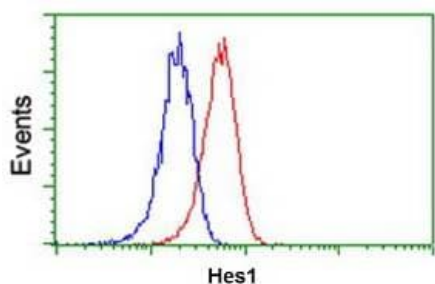
This image was generated using the ascites version of the product.



Immunocytochemistry/ Immunofluorescence - Anti-Hes1 antibody [OT12D2] (ab119776)

ab119776, at 1/100 dilution, staining Hes1 in COS7 cells transiently transfected with pCMV6-ENTRY Hes1 cDNA by Immunofluorescence.

This image was generated using the ascites version of the product.



Flow Cytometry (Intracellular) - Anti-Hes1 antibody [OT12D2] (ab119776)

ab119776, at 1/100 dilution, staining Hes1 (red) in Jurkat cells, compared to a nonspecific negative control antibody, (blue) by Flow cytometry (Intracellular).

This image was generated using the ascites version of the product.

**Please note:** All products are "FOR RESEARCH USE ONLY. NOT FOR USE IN DIAGNOSTIC PROCEDURES"

### Our Abpromise to you: Quality guaranteed and expert technical support

- Replacement or refund for products not performing as stated on the datasheet
- Valid for 12 months from date of delivery
- Response to your inquiry within 24 hours
- We provide support in Chinese, English, French, German, Japanese and Spanish
- Extensive multi-media technical resources to help you

- We investigate all quality concerns to ensure our products perform to the highest standards

If the product does not perform as described on this datasheet, we will offer a refund or replacement. For full details of the Abpromise, please visit <https://www.abcam.co.jp/abpromise> or contact our technical team.

### **Terms and conditions**

---

- Guarantee only valid for products bought direct from Abcam or one of our authorized distributors