


### Anti-Hes1 antibody [EPR4226] ab108937

リコンビナント **RabMAb**

★★★★☆ **14 Abreviews** **70 References** **画像数 7**

#### 製品の概要

|              |  |
|--------------|--|
| 製品名          | Anti-Hes1 antibody [EPR4226]   |
| 製品の詳細        | Rabbit monoclonal [EPR4226] to Hes1  |
| 由来種          | Rabbit   |
| アプリケーション     | <b>適用あり:</b> ICC/IF, WB, IHC-P, Flow Cyt (Intra)<br><b>適用なし:</b> IP  |
| 種交差性         | <b>交差種:</b> Rat, Human<br><b>交差が予測される動物種:</b> Mouse   |
| 免疫原          | Synthetic peptide. This information is proprietary to Abcam and/or its suppliers.  |
| ポジティブ・コントロール | WB: SH-SY5Y, MOLT-4, MDA-MB-231, MCF7, K-562, HUVEC, HepG2, Human brain, Human liver, Human placenta.  |
| 特記事項         | This product is a recombinant monoclonal antibody, which offers several advantages including: <ul style="list-style-type: none"> <li>- High batch-to-batch consistency and reproducibility</li> <li>- Improved sensitivity and specificity</li> <li>- Long-term security of supply</li> <li>- Animal-free production</li> </ul> For more information <a href="#">see here</a> .<br>Our RabMAb <sup>®</sup> technology is a patented hybridoma-based technology for making rabbit monoclonal antibodies. For details on our patents, please refer to <a href="#">RabMAb<sup>®</sup> patents</a> . |

#### 製品の特性

|       |   |
|-------|---|
| 製品の状態 | Liquid  |
| 保存方法  | Shipped at 4°C. Store at +4°C short term (1-2 weeks). Upon delivery aliquot. Store at -20°C. Stable for 12 months at -20°C. |
| バッファー | pH: 7.20<br>Preservative: 0.01% Sodium azide<br>Constituents: 40% Glycerol, 0.05% BSA, 59% PBS                              |
| 精製度   | Protein A purified  |
| ポリ/モノ | モノクローナル   |

クローン名                      EPR4226

アイソタイプ                    IgG

#### アプリケーション

**The Abpromise guarantee**           **Abpromise保証は、** 次のテスト済みアプリケーションにおけるab108937の使用に適用されます  
 アプリケーションノートには、推奨の開始希釈率がありますが、適切な希釈率につきましてはご検討ください。

| アプリケーション         | Abreviews | 特記事項   |
|------------------|-----------|--|
| ICC/IF           | ★★★★★ (2) | 1/1000.  |
| WB               | ★★★★★ (4) | 1/1000. Detects a band of approximately 30 kDa (predicted molecular weight: 30 kDa).   |
| IHC-P            | ★★★★★ (5) | 1/90 - 1/200. Perform heat mediated antigen retrieval before commencing with IHC staining protocol.<br>See <b><u>IHC antigen retrieval protocols</u></b> . |
| Flow Cyt (Intra) |           | 1/20 - 1/50.<br><b>ab172730</b> - Rabbit monoclonal IgG, is suitable for use as an isotype control with this antibody.                                     |

**追加情報**                              Is unsuitable for IP.

#### ターゲット情報

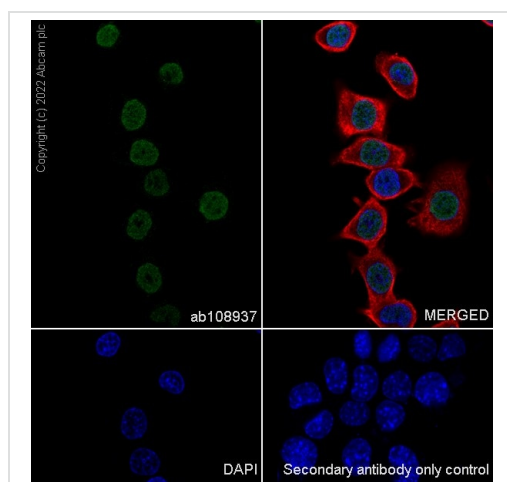
**機能**                                    Transcriptional repressor of genes that require a bHLH protein for their transcription. May act as a negative regulator of myogenesis by inhibiting the functions of MYOD1 and ASH1. Binds DNA on N-box motifs: 5'-CACNAG-3' with high affinity and on E-box motifs: 5'-CANNTG-3' with low affinity.

**配列類似性**                            Contains 1 basic helix-loop-helix (bHLH) domain.  
 Contains 1 Orange domain.

**ドメイン**                              Has a particular type of basic domain (presence of a helix-interrupting proline) that binds to the N-box (CACNAG), rather than the canonical E-box (CANNTG).  
 The C-terminal WRPW motif is a transcriptional repression domain necessary for the interaction with Groucho/TLE family members, transcriptional corepressors recruited to specific target DNA by Hairy-related proteins.  
 The bHLH, as well as cooperation between the central Orange domain and the C-terminal WRPW motif, is required for transcriptional repressor activity.

**細胞内局在**                            Nucleus.

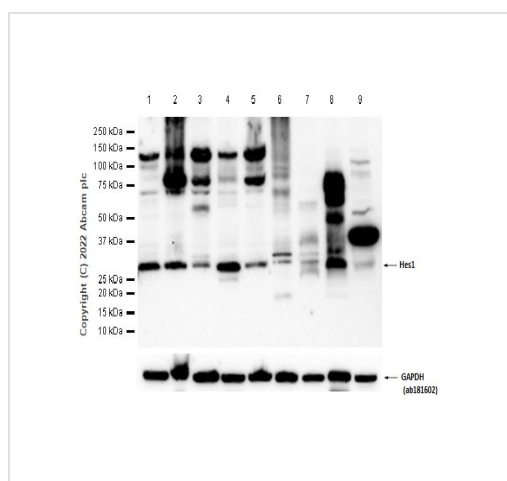
#### 画像



Immunocytochemistry/ Immunofluorescence - Anti-Hes1 antibody [EPR4226] (ab108937)

Immunofluorescent analysis of 4% Paraformaldehyde fixed 0.1% TritonX-100 permeabilised SH-SY5Y (Human neuroblastoma epithelial cell) labelling Hes1 with ab108937 at 1/1000 dilution, followed by AlexaFluor® 488 Goat anti-Rabbit secondary (**ab150077**) secondary antibody at 1/1000 dilution (green). Confocal image showing nuclear staining in SH-SY5Y cell line is observed. Anti-alpha Tubulin antibody [DM1A] - Microtubule Marker (Alexa Fluor® 594) (**ab195889**) was used to counterstain alpha Tubulin at 1/200 dilution (red). The Nuclear counterstain was DAPI (blue).

**Secondary antibody only control:** Secondary antibody is AlexaFluor® 488 Goat anti-Rabbit secondary (**ab150077**) at 1/1000 dilution.



Western blot - Anti-Hes1 antibody [EPR4226] (ab108937)

**All lanes :** Anti-Hes1 antibody [EPR4226] (ab108937) at 1/1000 dilution

**Lane 1 :** SH-SY5Y (Human bone marrow epithelial) whole cell lysate

**Lane 2 :** MOLT-4 (Human lymphoblastic leukemia T lymphoblast) whole cell lysate

**Lane 3 :** MDA-MB-231 (Human breast adenocarcinoma epithelial cell) whole cell lysate

**Lane 4 :** MCF7 (Human breast adenocarcinoma epithelial cell) whole cell lysate

**Lane 5 :** K-562 (Human chronic myelogenous leukemia lymphoblast) whole cell lysate

**Lane 6 :** HUVEC (Human umbilical vein endothelial cell) whole cell lysate

**Lane 7 :** HepG2 (Human hepatocellular carcinoma epithelial cell) whole cell lysate

**Lane 8 :** Human brain tissue lysate

**Lane 9 :** Human liver tissue lysate

Lysates/proteins at 20 µg per lane.

### Secondary

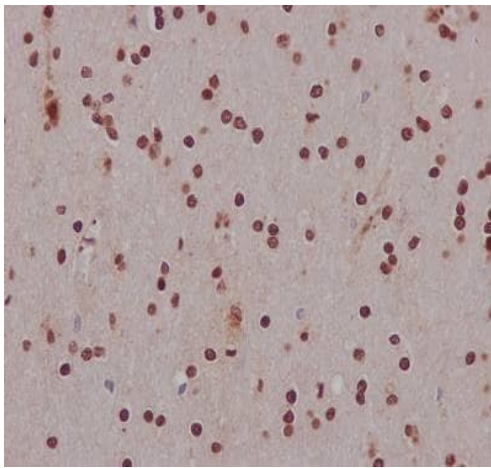
**All lanes :** Goat Anti-Rabbit IgG (HRP), specific to the non-reduced form of IgG at 1/20000 dilution

**Predicted band size:** 30 kDa

**Observed band size:** 30 kDa

**Exposure time:** 120 seconds

**Blocking and diluting buffer and concentration:** 5% NFDM /TBST.



Immunohistochemistry (Formalin/PFA-fixed paraffin-embedded sections) - Anti-Hes1 antibody [EPR4226] (ab108937)

Primary ab concentration dilution: 1:200, (0.5ug/ml)

Secondary ab: ImmunoHistoprobe (Ready to use) HRP Polymer for Rabbit IgG

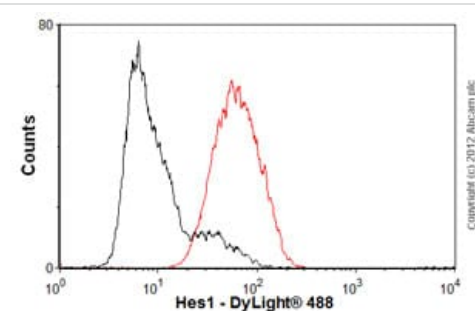
Secondary ab concentration: Prediluted

Tissue: Human brain

Fixative: Paraffin-embedded sections

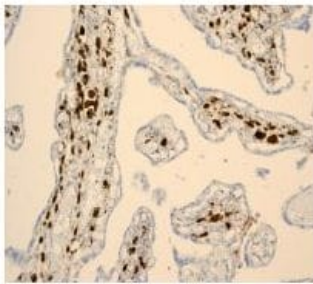
Counter stain: Hematoxylin

Antigen retrieval: Perform heat mediated antigen retrieval using Tris/EDTA Buffer, PH9



Flow Cytometry (Intracellular) - Anti-Hes1 antibody [EPR4226] (ab108937)

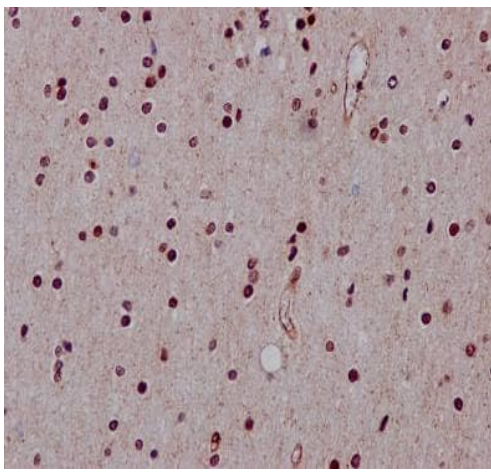
Overlay histogram showing SH-SY5Y cells stained with unpurified ab108937 (red line). The cells were fixed with 80% methanol (5 min) and then permeabilized with 0.1% PBS-Tween for 20 min. The cells were then incubated in 1x PBS / 10% normal goat serum / 0.3M glycine to block non-specific protein-protein interactions. The cells were then incubated with the antibody (ab108937, 1/100 dilution) for 30 min at 22°C. The secondary antibody used was DyLight® 488 goat anti-rabbit IgG (H+L) ([ab96899](#)) at 1/500 dilution for 30 min at 22°C. Isotype control antibody (black line) was rabbit IgG (monoclonal) (1µg/1x10<sup>6</sup> cells) used under the same conditions. Acquisition of >5,000 events was performed.



Immunohistochemistry (Formalin/PFA-fixed paraffin-embedded sections) - Anti-Hes1 antibody  
[EPR4226] (ab108937)

Immunohistochemical staining of Hes1 in paraffin-embedded human placenta tissue with unpurified ab108937 at 1/250 dilution.

Perform heat mediated antigen retrieval before commencing with IHC staining protocol.



Immunohistochemistry (Formalin/PFA-fixed paraffin-embedded sections) - Anti-Hes1 antibody  
[EPR4226] (ab108937)

Immunohistochemical staining of paraffin embedded human brain with unpurified ab108937 at a working dilution of 1 in 90. The secondary antibody used is a HRP polymer for rabbit IgG. The sample is counter-stained with hematoxylin. Antigen retrieval was performed using Tris-EDTA buffer, pH 9.0.

### Why choose a recombinant antibody?



**Research with confidence**  
Consistent and reproducible results



**Long-term and scalable supply**  
Recombinant technology



**Success from the first experiment**  
Confirmed specificity



**Ethical standards compliant**  
Animal-free production

Anti-Hes1 antibody [EPR4226] (ab108937)

**Please note:** All products are "FOR RESEARCH USE ONLY. NOT FOR USE IN DIAGNOSTIC PROCEDURES"

### **Our Abpromise to you: Quality guaranteed and expert technical support**

---

- Replacement or refund for products not performing as stated on the datasheet
- Valid for 12 months from date of delivery
- Response to your inquiry within 24 hours
  
- We provide support in Chinese, English, French, German, Japanese and Spanish
- Extensive multi-media technical resources to help you
- We investigate all quality concerns to ensure our products perform to the highest standards

If the product does not perform as described on this datasheet, we will offer a refund or replacement. For full details of the Abpromise, please visit <https://www.abcam.co.jp/abpromise> or contact our technical team.

### **Terms and conditions**

---

- Guarantee only valid for products bought direct from Abcam or one of our authorized distributors