


Anti-Hes1 antibody ab71559

★★★★★ [26 Abreviews](#) [126 References](#) [画像数 2](#)

製品の概要

製品名	Anti-Hes1 antibody
製品の詳細	Rabbit polyclonal to Hes1
由来種	Rabbit
特異性	This antibody reacts specifically with mouse 30 kDa Hes1 protein.
アプリケーション	適用あり: IHC-Fr, ICC/IF, IHC-P, WB
種交差性	交差種: Mouse, Human 交差が予測される動物種: Rat 
免疫原	Synthetic peptide corresponding to Human Hes1 (C terminal). Database link: Q14469
特記事項	<p>The Life Science industry has been in the grips of a reproducibility crisis for a number of years. Abcam is leading the way in addressing this with our range of recombinant monoclonal antibodies and knockout edited cell lines for gold-standard validation. Please check that this product meets your needs before purchasing.</p> <p>If you have any questions, special requirements or concerns, please send us an inquiry and/or contact our Support team ahead of purchase. Recommended alternatives for this product can be found below, along with publications, customer reviews and Q&As</p>

製品の特性

製品の状態	Liquid
保存方法	Shipped at 4°C. Store at +4°C short term (1-2 weeks). Upon delivery aliquot. Store at -20°C long term.
バッファー	Constituents: 1.21% Tris, 0.75% Glycine, 2% Sucrose
精製度	Whole antiserum
ポリ/モノ	ポリクローナル
アイソタイプ	IgG

アプリケーション

The Abpromise guarantee Abpromise保証は、次のテスト済みアプリケーションにおけるab71559の使用に適用されます

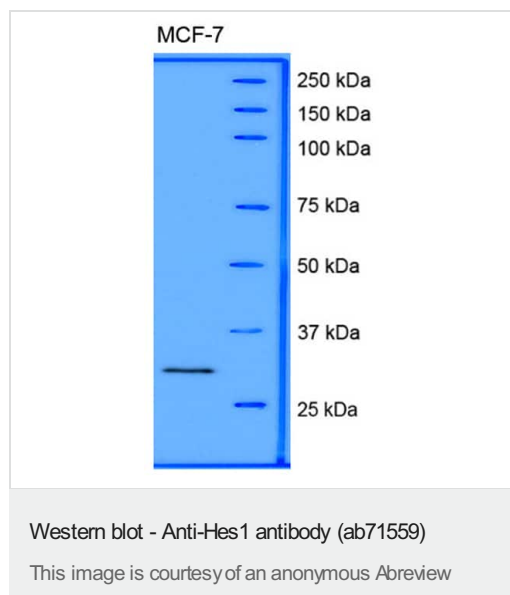
アプリケーションノートには、推奨の開始希釈率がありますが、適切な希釈率につきましてはご確認ください。

アプリケーション	Abreviews	特記事項
IHC-Fr	★★★★★ (3)	Use at an assay dependent concentration.
ICC/IF	★★★★★ (4)	Use at an assay dependent concentration.
IHC-P	★★★★★ (5)	Use at an assay dependent concentration.
WB	★★★★★ (14)	1/200 - 1/2000. Predicted molecular weight: 30 kDa.

ターゲット情報

機能	Transcriptional repressor of genes that require a bHLH protein for their transcription. May act as a negative regulator of myogenesis by inhibiting the functions of MYOD1 and ASH1. Binds DNA on N-box motifs: 5'-CACNAG-3' with high affinity and on E-box motifs: 5'-CANNTG-3' with low affinity.
配列類似性	Contains 1 basic helix-loop-helix (bHLH) domain. Contains 1 Orange domain.
ドメイン	Has a particular type of basic domain (presence of a helix-interrupting proline) that binds to the N-box (CACNAG), rather than the canonical E-box (CANNTG). The C-terminal WRPW motif is a transcriptional repression domain necessary for the interaction with Groucho/TLE family members, transcriptional corepressors recruited to specific target DNA by Hairy-related proteins. The bHLH, as well as cooperation between the central Orange domain and the C-terminal WRPW motif, is required for transcriptional repressor activity.
細胞内局在	Nucleus.

画像



Anti-Hes1 antibody (ab71559) at 1/2000 dilution + MCF-7 at 20 µg

Secondary

HRP conjugated goat anti-rabbit at 1/20000 dilution

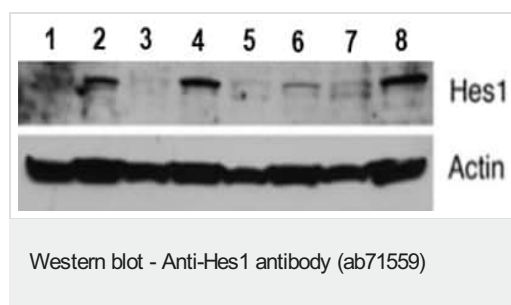
Developed using the ECL technique.

Performed under reducing conditions.

Predicted band size: 30 kDa

Exposure time: 15 seconds

Blocked with 5% milk at RT



All lanes : Anti-Hes1 antibody (ab71559)

Lane 1 : Normal kidney tissue taken from a patient of sporadic angiomyolipoma. (Patient 1)

Lane 2 : Tumor tissue taken from a patient of sporadic angiomyolipoma. (Patient 1)

Lane 3 : Normal kidney tissue taken from a patient of sporadic angiomyolipoma. (Patient 2)

Lane 4 : Tumor tissue taken from a patient of sporadic angiomyolipoma. (Patient 2)

Lane 5 : Normal kidney tissue taken from a patient of sporadic angiomyolipoma. (Patient 3)

Lane 6 : Tumor tissue taken from a patient of sporadic angiomyolipoma. (Patient 3)

Lane 7 : Normal kidney tissue taken from a patient of sporadic angiomyolipoma. (Patient 4)

Lane 8 : Tumor tissue taken from a patient of sporadic angiomyolipoma. (Patient 4)

Predicted band size: 30 kDa

Actin blot given as control.

Please note: All products are "FOR RESEARCH USE ONLY. NOT FOR USE IN DIAGNOSTIC PROCEDURES"

Our Abpromise to you: Quality guaranteed and expert technical support

- Replacement or refund for products not performing as stated on the datasheet
- Valid for 12 months from date of delivery
- Response to your inquiry within 24 hours
- We provide support in Chinese, English, French, German, Japanese and Spanish
- Extensive multi-media technical resources to help you
- We investigate all quality concerns to ensure our products perform to the highest standards

If the product does not perform as described on this datasheet, we will offer a refund or replacement. For full details of the Abpromise, please visit <https://www.abcam.co.jp/abpromise> or contact our technical team.

Terms and conditions

- Guarantee only valid for products bought direct from Abcam or one of our authorized distributors