


Anti-Hepcidin-25 antibody ab30760

★★★★★ 9 Abreviews 35 References 画像数 3

製品の概要

製品名	Anti-Hepcidin-25 antibody
製品の詳細	Rabbit polyclonal to Hepcidin-25
由来種	Rabbit
特異性	From Jan 2024, QC testing of replenishment batches of this polyclonal changed. All tested and expected application and reactive species combinations are still covered by our Abcam product promise. However, we no longer test all species. For more information on a specific batch, please contact our Scientific Support who will be happy to help.
アプリケーション	適用あり: WB, IHC-P
種交差性	交差種: Rat, Human 交差が予測される動物種: Mouse 
免疫原	Synthetic peptide conjugated to KLH derived from within residues 50 to the C-terminus of Human Hepcidin-25.Immunogen の所有権に関して(Peptide available as ab31875 .)
ポジティブ・コントロール	WB: Recombinant Hepcidin protein. IHC-P: Human liver tissue.
特記事項	<p>The Life Science industry has been in the grips of a reproducibility crisis for a number of years. Abcam is leading the way in addressing this with our range of recombinant monoclonal antibodies and knockout edited cell lines for gold-standard validation. Please check that this product meets your needs before purchasing.</p> <p>If you have any questions, special requirements or concerns, please send us an inquiry and/or contact our Support team ahead of purchase. Recommended alternatives for this product can be found below, along with publications, customer reviews and Q&As</p>

製品の特性

製品の状態	Liquid
保存方法	Shipped at 4°C. Store at +4°C short term (1-2 weeks). Upon delivery aliquot. Store at -20°C or -80°C. Avoid freeze / thaw cycle.
バッファー	pH: 7.40 Preservative: 0.02% Sodium azide Constituent: PBS
	Batches of this product that have a concentration < 1mg/ml may have BSA added as a stabilising

agent. If you would like information about the formulation of a specific lot, please contact our scientific support team who will be happy to help.

精製度	Immunogen affinity purified
ポリモノ	ポリクローナル
アイソタイプ	IgG

アプリケーション

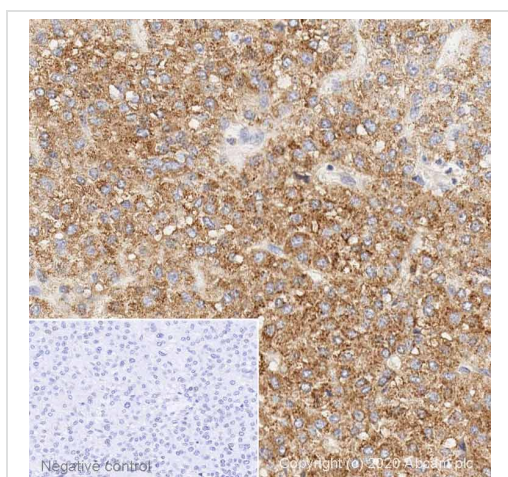
The Abpromise guarantee **Abpromise保証は、次のテスト済みアプリケーションにおけるab30760の使用に適用されます**
アプリケーションノートには、推奨の開始希釈率がありますが、適切な希釈率につきましてはご確認ください。

アプリケーション	Abreviews	特記事項
WB	★★★★★ (5)	1/10 - 1/100. Detects a band of approximately 32 kDa (predicted molecular weight: 3 kDa).
IHC-P	★★★★★ (1)	Use at an assay dependent concentration. Perform heat mediated antigen retrieval with citrate buffer pH 6 before commencing with IHC staining protocol.

ターゲット情報

機能	<p>Liver-produced hormone that constitutes the main circulating regulator of iron absorption and distribution across tissues. Acts by promoting endocytosis and degradation of ferroportin, leading to the retention of iron in iron-exporting cells and decreased flow of iron into plasma. Controls the major flows of iron into plasma: absorption of dietary iron in the intestine, recycling of iron by macrophages, which phagocytose old erythrocytes and other cells, and mobilization of stored iron from hepatocytes (PubMed:22306005).</p> <p>Has strong antimicrobial activity against E.coli ML35P N.cinerea and weaker against S.epidermidis, S.aureus and group b streptococcus bacteria. Active against the fungus C.albicans. No activity against P.aeruginosa (PubMed:11113131, PubMed:11034317).</p>
組織特異性	Highest expression in liver and to a lesser extent in heart and brain. Low levels in lung, tonsils, salivary gland, trachea, prostate gland, adrenal gland and thyroid gland. Secreted into the urine.
関連疾患	Hemochromatosis 2B
配列類似性	Belongs to the hepcidin family.
細胞内局在	Secreted.
製品の状態	Hepcidin produces a propeptide of 84 amino acids that undergoes enzymatic cleavage into mature peptides of 20, 22, and 25 amino acids. Active peptides are rich in cysteines that form intramolecular bonds and stabilize the beta-sheet structure

画像



Immunohistochemistry (Formalin/PFA-fixed paraffin-embedded sections) - Anti-Hepcidin-25 antibody (ab30760)

IHC image of Hepcidin-25 staining in Human normal liver formalin fixed paraffin embedded tissue section*, performed on a Leica Bond™ system using the standard protocol F. The section was pre-treated using heat mediated antigen retrieval with sodium citrate buffer (pH6, epitope retrieval solution 1) for 20 mins. The section was then incubated with ab30760, 5µg/ml, for 15 mins at room temperature and detected using an HRP conjugated compact polymer system. DAB was used as the chromogen. The section was then counterstained with haematoxylin and mounted with DPX.

For other IHC staining systems (automated and non-automated) customers should optimize variable parameters such as antigen retrieval conditions, primary antibody concentration and antibody incubation times.

**Tissue obtained from the Human Research Tissue Bank, supported by the NIHR Cambridge Biomedical Research Centre*



Western blot - Anti-Hepcidin-25 antibody (ab30760)

Anti-Hepcidin-25 antibody (ab30760) at 1 µg/ml + HAMP Human Full-length Recombinant Protein (Tagged) at 0.1 µg

Secondary

Goat polyclonal to Rabbit IgG - H&L - Pre-Adsorbed (HRP) at 1/3000 dilution

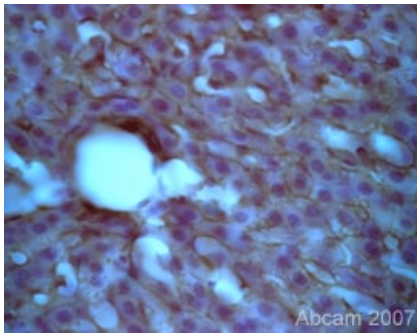
Performed under reducing conditions.

Predicted band size: 3 kDa

Observed band size: 32 kDa

Exposure time: 3 minutes

ab30760 was tested against Human HAMP Full-length Recombinant Protein (Tagged) predicted to run at 32kDa.



Hepcidin-25 expression in rat liver cells using Rabbit polyclonal to Hepcidin-25 (ab30760). Immunohistochemistry was performed on PFA fixed cells, ab30760 was used at 1/1000 incubated overnight at RT. Haemotoxylin is used as a nuclear counterstain in this image.

Immunohistochemistry (Formalin/PFA-fixed paraffin-embedded sections) - Anti-Hepcidin-25 antibody (ab30760)

This image is courtesy of Ruma Raha-Chowdhury (Cambridge University)

Please note: All products are "FOR RESEARCH USE ONLY. NOT FOR USE IN DIAGNOSTIC PROCEDURES"

Our Abpromise to you: Quality guaranteed and expert technical support

- Replacement or refund for products not performing as stated on the datasheet
- Valid for 12 months from date of delivery
- Response to your inquiry within 24 hours
- We provide support in Chinese, English, French, German, Japanese and Spanish
- Extensive multi-media technical resources to help you
- We investigate all quality concerns to ensure our products perform to the highest standards

If the product does not perform as described on this datasheet, we will offer a refund or replacement. For full details of the Abpromise, please visit <https://www.abcam.co.jp/abpromise> or contact our technical team.

Terms and conditions

- Guarantee only valid for products bought direct from Abcam or one of our authorized distributors