

Anti-Heparanase 1 antibody ab85543

★★★★★ 2 Abreviews 18 References 画像数 3

医薬用外劇物

製品の概要

製品名	Anti-Heparanase 1 antibody
製品の詳細	Rabbit polyclonal to Heparanase 1
由来種	Rabbit
特異性	ab85543 recognizes the 65kD precursor as well as the 50kD and 8kD subunits of Heparanase 1.
アプリケーション	適用あり: WB, IHC-P
種交差性	交差種: Human, Recombinant fragment
免疫原	Recombinant full length protein corresponding to Human Heparanase 1.
ポジティブ・コントロール	Human spleen tissue.
特記事項	<p>The Life Science industry has been in the grips of a reproducibility crisis for a number of years. Abcam is leading the way in addressing this with our range of recombinant monoclonal antibodies and knockout edited cell lines for gold-standard validation. Please check that this product meets your needs before purchasing.</p> <p>If you have any questions, special requirements or concerns, please send us an inquiry and/or contact our Support team ahead of purchase. Recommended alternatives for this product can be found below, along with publications, customer reviews and Q&As</p>

製品の特性

製品の状態	Liquid
保存方法	Shipped at 4°C. Upon delivery aliquot and store at -20°C. Avoid repeated freeze / thaw cycles.
バッファー	<p>pH: 7.20</p> <p>Preservative: 0.01% Thimerosal (merthiolate)</p> <p>Constituent: PBS</p>
精製度	Protein G purified
ポリ/モノ	ポリクローナル
アイソタイプ	IgG

アプリケーション

The Abpromise guarantee

Abpromise保証は、次のテスト済みアプリケーションにおけるab85543の使用に適用されます

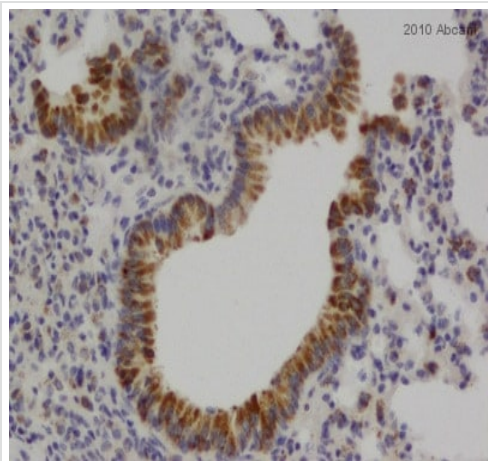
アプリケーションノートには、推奨の開始希釈率がありますが、適切な希釈率につきましてはご確認ください。

アプリケーション	Abreviews	特記事項
WB		1/500. Predicted molecular weight: 62 kDa.
IHC-P	★★★★★ (1)	Use a concentration of 5 µg/ml. Perform heat mediated antigen retrieval with citrate buffer pH 6 before commencing with IHC staining protocol.

ターゲット情報

機能	Endoglycosidase which is a cell surface and extracellular matrix-degrading enzyme. Cleaves heparan sulfate proteoglycans (HSPGs) into heparan sulfate side chains and core proteoglycans. Also implicated in the extravasation of leukocytes and tumor cell lines. Due to its contribution to metastasis and angiogenesis, it is considered to be a potential target for anti-cancer therapies.
組織特異性	Highly expressed in placenta and spleen and weakly expressed in lymph node, thymus, peripheral blood leukocytes, bone marrow, endothelial cells, fetal liver and tumor tissues.
配列類似性	Belongs to the glycosyl hydrolase 79 family.
翻訳後修飾	Proteolytically processed. The cleavage of the 65 kDa form leads to the generation of a linker peptide, 8 kDa and 50 kDa product. The active form, the 8/50 kDa heterodimer, is resistant to degradation. Complete removal of the linker peptide appears to be a prerequisite to the complete activation of the enzyme. N-glycosylated. Glycosylation of the 50 kDa subunit appears to be essential for its solubility.
細胞内局在	Lysosome membrane. Secreted. Secreted, internalised and transferred to late endosomes/lysosomes as a proheparanase. In lysosomes, it is processed into the active form, the heparanase. The uptake or internalisation of proheparanase is mediated by HSPGs. Heparin appears to be a competitor and retain proheparanase in the extracellular medium.

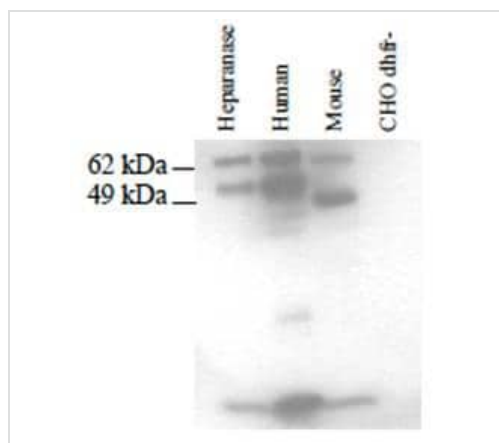
画像



Immunohistochemistry (Formalin/PFA-fixed paraffin-embedded sections) - Anti-Heparanase 1 antibody (ab85543)

This image is courtesy of an Abreview submitted by Jim Manavis

ab85543 staining Heparanase 1 in Human lung tissue sections by Immunohistochemistry (IHC-P - paraformaldehyde-fixed, paraffin-embedded sections). Tissue was fixed with formaldehyde and blocked with 3% NHS for 30 minutes at room temperature; antigen retrieval was by heat mediation with an EDTA buffer. Samples were incubated with primary antibody (1/4000 in NHS) for 8 hours. A Biotin-conjugated Goat anti-rabbit IgG polyclonal (1/250) was used as the secondary antibody.



Western blot - Anti-Heparanase 1 antibody (ab85543)

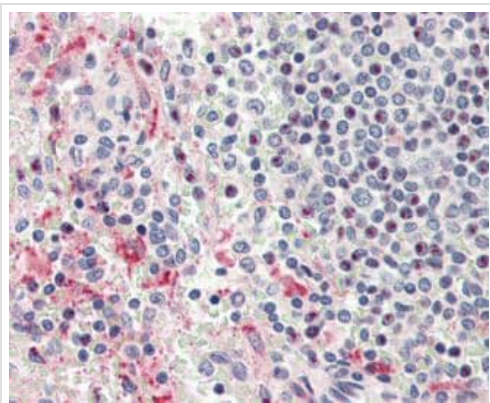
Purified recombinant human heparanase served as a control (Lane1). Lane2: An extract from 6.5×10^3 CHO cells, transfected with human Heparanase; Lane3: extract from 8×10^4 CHO cells, transfected with mouse Heparanase, and Lane4: extract from 5×10^5 non-transfected CHO dhfr- cells, were loaded onto 4-12% NuPage gel. The proteins were transferred to a PVDF and subjected to Western Blot analysis using ab85543 at 1:1000 dilution. The 65kD precursor and the 50kD and 8kD subunits are clearly detected. Lane 1 : Purified recombinant human Heparanase served as a control

Lane 2 : Extract from 6.5×10^3 CHO cells, transfected with human Heparanase

Lane 3 : Extract from 8×10^4 CHO cells, transfected with mouse Heparanase

Lane 4 : Extract from 5×10^5 non-transfected CHO dhfr- cells

Cell were loaded onto 4-12% NuPage gel. The proteins were transferred to a PVDF and subjected to Western Blot analysis using ab85543 at 1:1000 dilution. The cleavage of the 65 kDa form leads



Immunohistochemistry (Formalin/PFA-fixed paraffin-embedded sections) - Anti-Heparanase 1 antibody (ab85543)

ab85543, at 5µg/ml, staining Heparanase 1 in formalin-fixed, paraffin-embedded human spleen tissue by Immunohistochemistry.

Please note: All products are "FOR RESEARCH USE ONLY. NOT FOR USE IN DIAGNOSTIC PROCEDURES"

Our Abpromise to you: Quality guaranteed and expert technical support

- Replacement or refund for products not performing as stated on the datasheet
- Valid for 12 months from date of delivery
- Response to your inquiry within 24 hours
- We provide support in Chinese, English, French, German, Japanese and Spanish
- Extensive multi-media technical resources to help you
- We investigate all quality concerns to ensure our products perform to the highest standards

If the product does not perform as described on this datasheet, we will offer a refund or replacement. For full details of the Abpromise, please visit <https://www.abcam.co.jp/abpromise> or contact our technical team.

Terms and conditions

- Guarantee only valid for products bought direct from Abcam or one of our authorized distributors