

Anti-Hemopexin antibody [EPR5610] ab124935

リコンビナント **RabMAb**

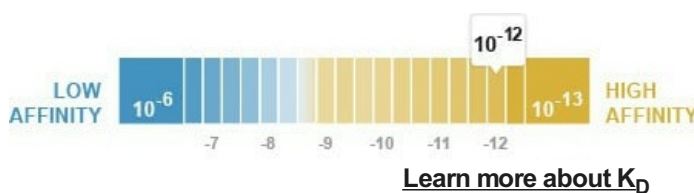
★★★★★ **2 Abreviews** **2 References** 画像数 7

製品の概要

製品名	Anti-Hemopexin antibody [EPR5610]
製品の詳細	Rabbit monoclonal [EPR5610] to Hemopexin
由来種	Rabbit
アプリケーション	適用あり: Flow Cyt (Intra), WB, IP, IHC-P, ICC/IF
種交差性	交差種: Human 非交差種: Mouse, Rat
免疫原	Synthetic peptide within Human Hemopexin aa 400-500. The exact sequence is proprietary.
ポジティブ・コントロール	WB: Human fetal liver and plasma lysates. IHC-P: Human liver tissue. Flow Cyt (intra): HepG2 cells. ICC: HepG2 cells.
特記事項	<p>This product is a recombinant monoclonal antibody, which offers several advantages including:</p> <ul style="list-style-type: none"> - High batch-to-batch consistency and reproducibility - Improved sensitivity and specificity - Long-term security of supply - Animal-free production <p>For more information see here.</p> <p>Our RabMAb[®] technology is a patented hybridoma-based technology for making rabbit monoclonal antibodies. For details on our patents, please refer to RabMAb[®] patents.</p>

製品の特性

製品の状態	Liquid
保存方法	Shipped at 4°C. Store at -20°C. Stable for 12 months at -20°C.
解離定数 (K _D 値)	K _D = 8.30 x 10 ⁻¹² M



バッファー	pH: 7.2 Preservative: 0.05% Sodium azide
-------	---

	Constituents: 40% Glycerol (glycerin, glycerine), 9.85% Tris glycine, 50% Tissue culture supernatant
精製度	Tissue culture supernatant
ポリ/モノ	モノクローナル
クローン名	EPR5610
アイソタイプ	IgG

アプリケーション

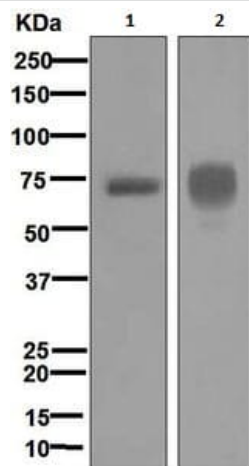
The Abpromise guarantee Abpromise保証は、 次のテスト済みアプリケーションにおけるab124935の使用に適用されます
 アプリケーションノートには、推奨の開始希釈率がありますが、適切な希釈率につきましてはご検討ください。

アプリケーション	Abreviews	特記事項
Flow Cyt (Intra)		1/200.
WB	★★★★★ (1)	1/10000 - 1/50000. Detects a band of approximately 70-75 kDa (predicted molecular weight: 52 kDa).
IP		1/10 - 1/100.
IHC-P	★★★★★ (1)	1/250 - 1/500. Perform heat mediated antigen retrieval with citrate buffer pH 6 before commencing with IHC staining protocol.
ICC/IF		1/100 - 1/250.

ターゲット情報

機能	Binds heme and transports it to the liver for breakdown and iron recovery, after which the free hemopexin returns to the circulation.
組織特異性	Expressed by the liver and secreted in plasma.
配列類似性	Belongs to the hemopexin family. Contains 5 hemopexin-like domains.
翻訳後修飾	N- and O-glycosylated. O-glycosylated with core 1 or possibly core 8 glycans.
細胞内局在	Secreted.

画像



Western blot - Anti-Hemopexin antibody [EPR5610] (ab124935)

All lanes : Anti-Hemopexin antibody [EPR5610] (ab124935) at 1/10000 dilution

Lane 1 : Fetal liver lysate

Lane 2 : Human plasma lysate

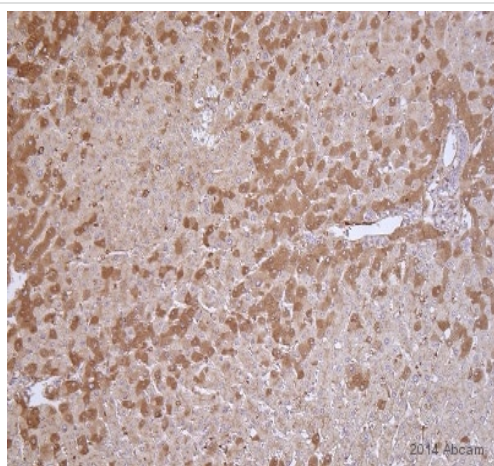
Lysates/proteins at 10 µg per lane.

Secondary

All lanes : HRP labelled Goat anti Rabbit IgG at 1/2000 dilution

Predicted band size: 52 kDa

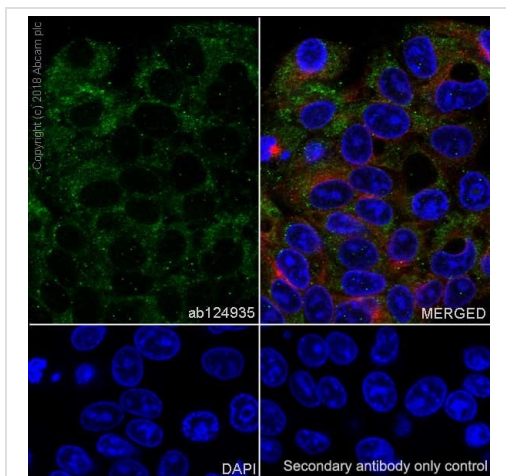
Observed band size: 70-75 kDa



Immunohistochemistry (Formalin/PFA-fixed paraffin-embedded sections) - Anti-Hemopexin antibody [EPR5610] (ab124935)

This image is courtesy of an Abreview submitted by Steffen Rickelt

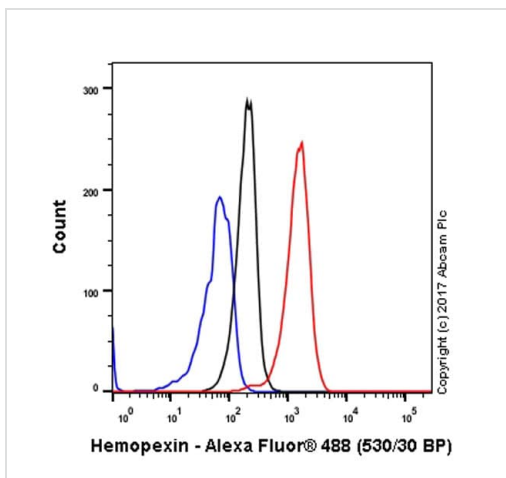
ab124935 staining Hemopexin in human liver tissue sections by Immunohistochemistry (IHC-P - paraformaldehyde-fixed, paraffin-embedded sections). Tissue was fixed with formaldehyde, permeabilized with 0.2% Triton X-100 in PBS and blocked with 5% milk for 30 minutes at room temperature; antigen retrieval was by heat mediation in Tris pH 9.0. Samples were incubated with primary antibody (1/200 in PBS) for 16 hours at 4°C. An undiluted Biotin-conjugated goat anti-rabbit IgG polyclonal was used as the secondary antibody.



Immunocytochemistry/ Immunofluorescence - Anti-Hemopexin antibody [EPR5610] (ab124935)

Immunocytochemistry analysis of HepG2 (human hepatocellular carcinoma epithelial cell) labeling Hemopexin with purified ab124935 at 1/200 dilution (10 µg/ml). Cells were fixed with 100% methanol. Goat anti rabbit IgG (Alexa Fluor® 488, [ab150077](#)) at 1/1000 (2 µg/ml) was used as the secondary antibody. [ab195889](#) Anti-alpha Tubulin antibody [DM1A] - Microtubule Marker (Alexa Fluor® 594) 1/200 (2.8 µg/ml) was used as counterstain. Nuclei were stained blue with DAPI.

Negative control: PBS instead of the primary antibody.



Flow Cytometry (Intracellular) - Anti-Hemopexin antibody [EPR5610] (ab124935)

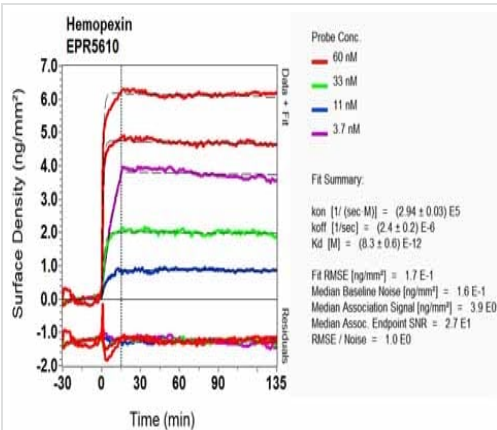
Intracellular Flow Cytometry analysis of HepG2 (Human hepatocellular carcinoma epithelial cell) cells labeling Hemopexin (red) with ab124935 at a 1/200 dilution. Cells were fixed with 4% paraformaldehyde and permeabilized with 90% methanol. A goat anti-rabbit IgG (Alexa Fluor® 488) ([ab150077](#)) was used as the secondary antibody at a 1/2000 dilution. Black - Rabbit monoclonal IgG (Black) ([ab172730](#)). Blue (unlabeled control) - Cell without incubation with primary antibody and secondary antibody (Blue).



Immunohistochemistry (Formalin/PFA-fixed paraffin-embedded sections) - Anti-Hemopexin antibody [EPR5610] (ab124935)

ab124935, at 1/250 dilution, staining Hemopexin in paraffin-embedded Human liver tissue by Immunohistochemistry.

Perform heat mediated antigen retrieval with citrate buffer pH 6 before commencing with IHC staining protocol.



OxLD Scanning - Anti-Hemopexin antibody [EPR5610] (ab124935)

Equilibrium dissociation constant (K_D)

Learn more about K_D

[Click here to learn more about \$K_D\$](#)

Why choose a recombinant antibody?



Research with confidence
Consistent and reproducible results



Long-term and scalable supply
Recombinant technology



Success from the first experiment
Confirmed specificity



Ethical standards compliant
Animal-free production

Anti-Hemopexin antibody [EPR5610] (ab124935)

Please note: All products are "FOR RESEARCH USE ONLY. NOT FOR USE IN DIAGNOSTIC PROCEDURES"

Our Abpromise to you: Quality guaranteed and expert technical support

- Replacement or refund for products not performing as stated on the datasheet

- Valid for 12 months from date of delivery
- Response to your inquiry within 24 hours
- We provide support in Chinese, English, French, German, Japanese and Spanish
- Extensive multi-media technical resources to help you
- We investigate all quality concerns to ensure our products perform to the highest standards

If the product does not perform as described on this datasheet, we will offer a refund or replacement. For full details of the Abpromise, please visit <https://www.abcam.co.jp/abpromise> or contact our technical team.

Terms and conditions

- Guarantee only valid for products bought direct from Abcam or one of our authorized distributors