


Anti-Hemopexin antibody ab116532

画像数 1

製品の概要

製品名	Anti-Hemopexin antibody
製品の詳細	Rabbit polyclonal to Hemopexin
由来種	Rabbit
アプリケーション	適用あり: WB
種交差性	交差種: Mouse, Rat 交差が予測される動物種: Rabbit, Human, Chimpanzee, Macaque monkey, Gorilla, Orangutan 
免疫原	Synthetic peptide. This information is proprietary to Abcam and/or its suppliers.
ポジティブ・コントロール	This antibody gave a positive signal in both Mouse and Rat Sciatic Nerve tissue lysates.
特記事項	<p>The Life Science industry has been in the grips of a reproducibility crisis for a number of years. Abcam is leading the way in addressing this with our range of recombinant monoclonal antibodies and knockout edited cell lines for gold-standard validation. Please check that this product meets your needs before purchasing.</p> <p>If you have any questions, special requirements or concerns, please send us an inquiry and/or contact our Support team ahead of purchase. Recommended alternatives for this product can be found below, along with publications, customer reviews and Q&As</p>

製品の特性

製品の状態	Liquid
保存方法	Shipped at 4°C. Store at +4°C short term (1-2 weeks). Upon delivery aliquot. Store at -20°C or -80°C. Avoid freeze / thaw cycle.
バッファー	pH: 7.40 Preservative: 0.02% Sodium azide Constituent: PBS Batches of this product that have a concentration < 1mg/ml may have BSA added as a stabilising agent. If you would like information about the formulation of a specific lot, please contact our scientific support team who will be happy to help.
精製度	Immunogen affinity purified
ポリ/モノ	ポリクローナル

アイソタイプ

lgG

アプリケーション

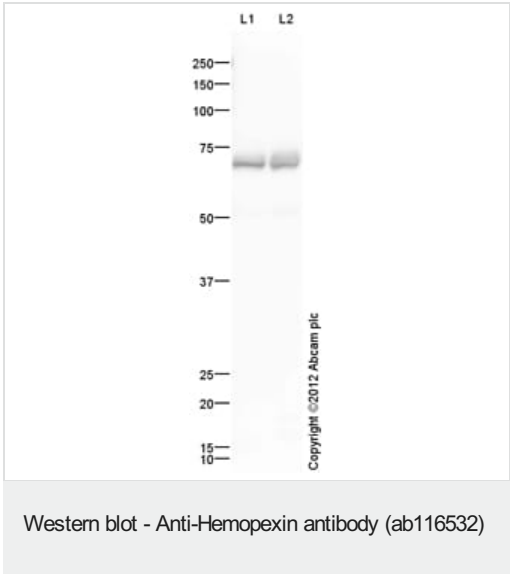
The Abpromise guarantee Abpromise保証は、 次のテスト済みアプリケーションにおけるab116532の使用に適用されます
アプリケーションノートには、推奨の開始希釈率がありますが、適切な希釈率につきましてはご確認ください。

アプリケーション	Abreviews	特記事項
WB		Use a concentration of 1 µg/ml. Detects a band of approximately 70 kDa (predicted molecular weight: 52 kDa).

ターゲット情報

機能	Binds heme and transports it to the liver for breakdown and iron recovery, after which the free hemopexin returns to the circulation.
組織特異性	Expressed by the liver and secreted in plasma.
配列類似性	Belongs to the hemopexin family. Contains 5 hemopexin-like domains.
翻訳後修飾	N- and O-glycosylated. O-glycosylated with core 1 or possibly core 8 glycans.
細胞内局在	Secreted.

画像



All lanes : Anti-Hemopexin antibody (ab116532) at 1 µg/ml

Lane 1 : Mouse Sciatic Nerve Tissue Lysate
Lane 2 : Rat Sciatic Nerve Rat Tissue Lysate

Lysates/proteins at 10 µg per lane.

Secondary
All lanes : Goat Anti-Rabbit IgG H&L (HRP) ([ab97051](#)) at 1/10000 dilution

Developed using the ECL technique.

Performed under reducing conditions.

Predicted band size: 52 kDa
Observed band size: 70 kDa

Exposure time: 1 minute

Hemopexin has been shown to migrate at ~70 kDa under reducing conditions by Madore et al PMID: 9930744. We welcome customer feedback. Hemopexin contains a number of potential glycosylation sites (SwissProt) which may explain its migration at a higher molecular weight than predicted. This blot was produced using a 10% Bis-tris gel under the MES buffer system. The gel was run at 200V for 35 minutes before being transferred onto a Nitrocellulose membrane at 30V for 70 minutes. The membrane was then blocked for an hour using 5% Bovine Serum Albumin before being incubated with ab116532 overnight at 4°C. Antibody binding was detected using an anti-rabbit antibody conjugated to HRP, and visualised using ECL development solution.

Please note: All products are "FOR RESEARCH USE ONLY. NOT FOR USE IN DIAGNOSTIC PROCEDURES"

Our Abpromise to you: Quality guaranteed and expert technical support

- Replacement or refund for products not performing as stated on the datasheet
- Valid for 12 months from date of delivery
- Response to your inquiry within 24 hours
- We provide support in Chinese, English, French, German, Japanese and Spanish
- Extensive multi-media technical resources to help you
- We investigate all quality concerns to ensure our products perform to the highest standards

If the product does not perform as described on this datasheet, we will offer a refund or replacement. For full details of the Abpromise, please visit <https://www.abcam.co.jp/abpromise> or contact our technical team.

Terms and conditions

- Guarantee only valid for products bought direct from Abcam or one of our authorized distributors