


Anti-Heme Oxygenase 1 antibody [HO-1-1] ab13248

★★★★★ [19 Abreviews](#) [298 References](#) [画像数 7](#)

製品の概要

製品名	Anti-Heme Oxygenase 1 antibody [HO-1-1]
製品の詳細	Mouse monoclonal [HO-1-1] to Heme Oxygenase 1
由来種	Mouse
アプリケーション	適用あり: WB, Flow Cyt (Intra), Sandwich ELISA, IHC-P
種交差性	交差種: Mouse, Rat, Cow, Dog, Human 交差が予測される動物種: Pig 
免疫原	Synthetic peptide: MERQPDSMPQDLSEALKEATKEVHTQAEN , corresponding to amino acids 1-30 of Human Heme Oxygenase 1. Run BLAST with Run BLAST with
ポジティブ・コントロール	Recombinant Human or Rat HO-1 (Hsp32) Protein. HEK293 treated with 30 uM hemin for 18hrs (see Abreview). IHC-P: FFPE human spleen normal.
特記事項	<p>This product was changed from ascites to tissue culture supernatant on 22nd May 2019. Please note that the dilutions may need to be adjusted accordingly. If you have any questions, please do not hesitate to contact our scientific support team.</p> <p>The Life Science industry has been in the grips of a reproducibility crisis for a number of years. Abcam is leading the way in addressing this with our range of recombinant monoclonal antibodies and knockout edited cell lines for gold-standard validation. Please check that this product meets your needs before purchasing.</p> <p>If you have any questions, special requirements or concerns, please send us an inquiry and/or contact our Support team ahead of purchase. Recommended alternatives for this product can be found below, along with publications, customer reviews and Q&As</p>

製品の特性

製品の状態	Liquid
保存方法	Shipped at 4°C. Upon delivery aliquot and store at -20°C. Avoid freeze / thaw cycles.
バッファー	Preservative: 0.09% Sodium azide Constituents: PBS, 50% Glycerol (glycerin, glycerine)
精製度	Tissue culture supernatant

特記事項(精製)	Purified from TCS.
ポリ/モノ	モノクローナル
クローン名	HO-1-1
アイソタイプ	IgG1

アプリケーション

The Abpromise guarantee **Abpromise保証は、次のテスト済みアプリケーションにおけるab13248の使用に適用されます**

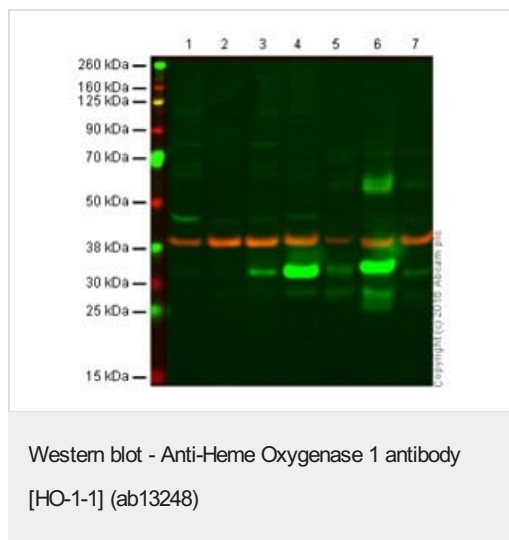
アプリケーションノートには、推奨の開始希釈率がありますが、適切な希釈率につきましてはご確認ください。

アプリケーション	Abreviews	特記事項
WB	★★★★★ (15)	Use a concentration of 4 µg/ml. Detects a band of approximately 32 kDa (predicted molecular weight: 34.6 kDa).
Flow Cyt (Intra)		Use at an assay dependent concentration. ab170190 - Mouse monoclonal IgG1, is suitable for use as an isotype control with this antibody.
Sandwich ELISA		Use at an assay dependent concentration. Can be paired for Sandwich ELISA with Rabbit polyclonal to Heme Oxygenase 1 (ab13243) . For sandwich ELISA, use this antibody as Capture at 5 µg/ml with Rabbit polyclonal to Heme Oxygenase 1 (ab13243) as Detection.
IHC-P	★★★★★ (1)	Use at an assay dependent concentration. Perform heat mediated antigen retrieval with citrate buffer pH 6 before commencing with IHC staining protocol.

ターゲット情報

機能	Heme oxygenase cleaves the heme ring at the alpha methene bridge to form biliverdin. Biliverdin is subsequently converted to bilirubin by biliverdin reductase. Under physiological conditions, the activity of heme oxygenase is highest in the spleen, where senescent erythrocytes are sequestered and destroyed.
配列類似性	Belongs to the heme oxygenase family.
細胞内局在	Microsome. Endoplasmic reticulum.

画像



All lanes : Anti-Heme Oxygenase 1 antibody [HO-1-1] (ab13248)
at 1 µg/ml

Lane 1 : Hek293

Lane 2 : HL60

Lane 3 : HeLa

Lane 4 : A549

Lane 5 : Hu spleen

Lane 6 : Ms spleen

Lane 7 : Rt spleen

Lysates/proteins at 10 µg per lane.

Secondary

All lanes : IRDye® 800CW Goat anti Mouse

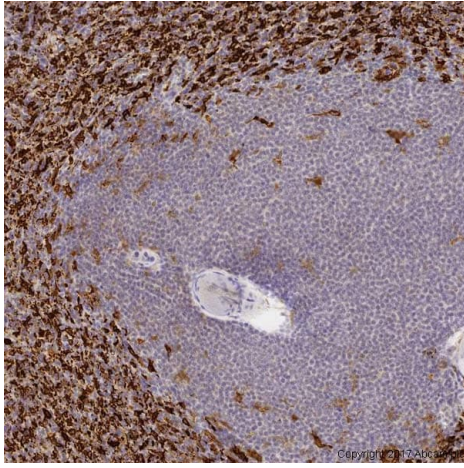
Predicted band size: 34.6 kDa

Observed band size: 32 kDa

Hek293 & HL60 presumed negative or very low expression.

Loading control GAPDH at 38kDa

This image was generated using the ascites version of the product.



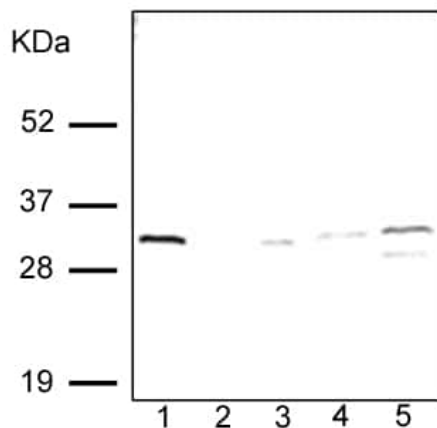
Immunohistochemistry (Formalin/PFA-fixed paraffin-embedded sections) - Anti-Heme Oxygenase 1 antibody [HO-1-1] (ab13248)

IHC image of Hem Oxygenase 1 staining in a section of formalin fixed, paraffin embedded normal human spleen tissue section*, performed on a Leica Bond™ system using the standard protocol F. The section was pre-treated using heat mediated antigen retrieval with sodium citrate buffer (pH6, epitope retrieval solution 1) for 20 mins. The section was then incubated with ab13248, 5µg/ml, for 15 mins at room temperature and detected using an HRP conjugated compact polymer system. DAB was used as the chromogen. The section was then counterstained with haematoxylin and mounted with DPX.

This image was generated using the ascites version of the product.

For other IHC staining systems (automated and non-automated) customers should optimize variable parameters such as antigen retrieval conditions, primary antibody concentration and antibody incubation times.

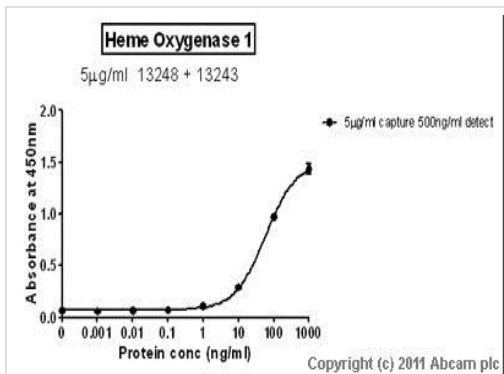
*Tissue obtained from the Human Research Tissue Bank, supported by the NIHR Cambridge Biomedical Research Centre



Western blot - Anti-Heme Oxygenase 1 antibody [HO-1-1] (ab13248)

The following proteins and lysates were electrophoresed; Lane 1 - Heme-Oxygenase-1 (Hsp32) Protein (50ng), lane 2 - Heme-Oxygenase-2 protein NSP-550 (100ng), lane 3 - MDBK Cell Lysate (20ug), lane 4 - Mouse liver microsome (20ug) and lane 5 - Dog liver microsome (20ug). ab13248 was applied at a concentration of 4ug/ml-1.

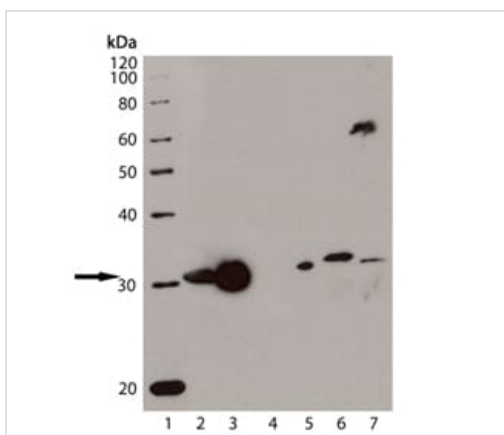
This image was generated using the ascites version of the product.



Sandwich ELISA - Anti-Heme Oxygenase 1 antibody
[HO-1-1] (ab13248)

Standard Curve for Heme Oxygenase 1 (Analyte: **Heme Oxygenase 1 protein (Tagged) (ab85243)**); dilution range 1pg/ml to 1µg/ml using Capture Antibody **Mouse monoclonal [HO-1-1] to Heme Oxygenase 1 (ab13248)** at 5µg/ml and Detector Antibody **Rabbit polyclonal to Heme Oxygenase 1 (ab13243)** at 0.5µg/ml.

This image was generated using the ascites version of the product.



Western blot - Anti-Heme Oxygenase 1 antibody
[HO-1-1] (ab13248)

Lane 1 : MW marker

Lanes 2-7 : Anti-Heme Oxygenase 1 antibody [HO-1-1] (ab13248)

Lane 2 : Recombinant Rat Heme Oxygenase 1

Lane 3 : Recombinant Human Heme Oxygenase 1

Lane 4 : Recombinant Human Heme Oxygenase 2

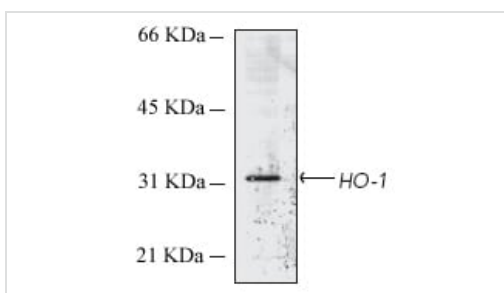
Lane 5 : MDBK cell lysate

Lane 6 : Dog liver microsome

Lane 7 : Mouse liver microsome

Predicted band size: 34.6 kDa

This image was generated using the ascites version of the product.

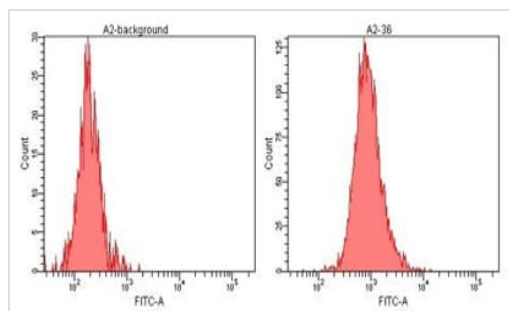


Western blot - Anti-Heme Oxygenase 1 antibody
[HO-1-1] (ab13248)

Anti-Heme Oxygenase 1 antibody [HO-1-1] (ab13248) at 1/250
dilution + Human microsome lysate

Predicted band size: 34.6 kDa

This image was generated using the ascites version of the product.



Flow Cytometry (Intracellular) - Anti-Heme
Oxygenase 1 antibody [HO-1-1] (ab13248)

ab13248 at 10µg/ml staining Heme Oxygenase 1 in human lung cancer A2 cells by flow cytometry. The left image represents staining with isotype control antibody and the right image shows staining with ab13248.

This image was generated using the ascites version of the product.

Please note: All products are "FOR RESEARCH USE ONLY. NOT FOR USE IN DIAGNOSTIC PROCEDURES"

Our Abpromise to you: Quality guaranteed and expert technical support

- Replacement or refund for products not performing as stated on the datasheet
- Valid for 12 months from date of delivery
- Response to your inquiry within 24 hours
- We provide support in Chinese, English, French, German, Japanese and Spanish
- Extensive multi-media technical resources to help you
- We investigate all quality concerns to ensure our products perform to the highest standards

If the product does not perform as described on this datasheet, we will offer a refund or replacement. For full details of the Abpromise, please visit <https://www.abcam.co.jp/abpromise> or contact our technical team.

Terms and conditions

- Guarantee only valid for products bought direct from Abcam or one of our authorized distributors