

Anti-Heme Oxygenase 1 antibody [EPR1390Y] ab68477

KO 評価済 リコンビナント RabMAb

★★★★★ [5 Abreviews](#) [158 References](#) [画像数 8](#)

製品の概要

| | |
|--------------|--|
| 製品名 | Anti-Heme Oxygenase 1 antibody [EPR1390Y] |
| 製品の詳細 | Rabbit monoclonal [EPR1390Y] to Heme Oxygenase 1 |
| 由来種 | Rabbit |
| アプリケーション | 適用あり: Flow Cyt (Intra), ICC/IF, WB, IP 適用なし: IHC-P |
| 種交差性 | 交差種: Mouse, Rat, Human |
| 免疫原 | Synthetic peptide. This information is proprietary to Abcam and/or its suppliers. |
| ポジティブ・コントロール | HepG2, A549, rat kidney, rat spleen, mouse kidney cell lysate. |
| 特記事項 | This product is a recombinant monoclonal antibody, which offers several advantages including: <ul style="list-style-type: none"> - High batch-to-batch consistency and reproducibility - Improved sensitivity and specificity - Long-term security of supply - Animal-free production For more information see here . Our RabMAb [®] technology is a patented hybridoma-based technology for making rabbit monoclonal antibodies. For details on our patents, please refer to RabMAb[®] patents . |

製品の特性

| | |
|--------|---|
| 製品の状態 | Liquid |
| 保存方法 | Shipped at 4°C. Store at +4°C short term (1-2 weeks). Upon delivery aliquot. Store at -20°C. Avoid freeze / thaw cycle. |
| バッファー | pH: 7.2 Preservative: 0.01% Sodium azide Constituents: 40% Glycerol (glycerin, glycerine), 0.05% BSA, 59% PBS |
| 精製度 | Protein A purified |
| ポリ/モノ | モノクローナル |
| クローン名 | EPR1390Y |
| アイソタイプ | IgG |

アプリケーション

The Abpromise guarantee Abpromise保証は、次のテスト済みアプリケーションにおけるab68477の使用に適用されます
アプリケーションノートには、推奨の開始希釈率がありますが、適切な希釈率につきましてはご確認ください。

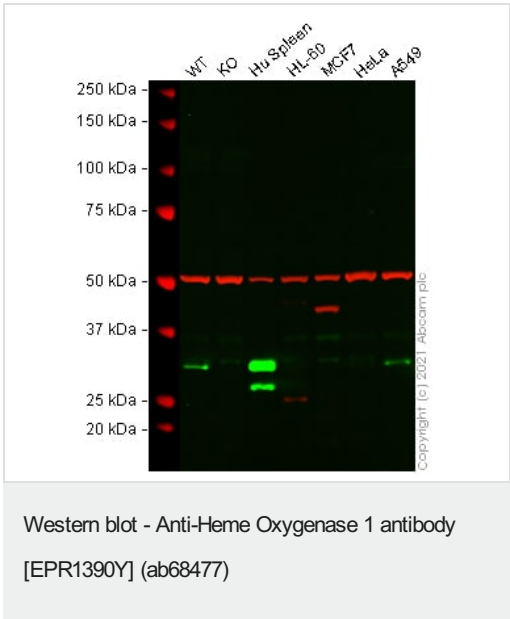
| アプリケーション | Abreviews | 特記事項 |
|------------------|-----------|--|
| Flow Cyt (Intra) | | Use at an assay dependent concentration. ab172730 - Rabbit monoclonal IgG, is suitable for use as an isotype control with this antibody. |
| ICC/IF | ★★★★★ (1) | 1/100 - 1/250. |
| WB | ★★★★★ (4) | 1/1000 - 1/20000. Detects a band of approximately 33 kDa (predicted molecular weight: 33 kDa). |
| IP | | 1/20. |

追加情報 Is unsuitable for IHC-P.

ターゲット情報

| | |
|-------|---|
| 機能 | Heme oxygenase cleaves the heme ring at the alpha methene bridge to form biliverdin. Biliverdin is subsequently converted to bilirubin by biliverdin reductase. Under physiological conditions, the activity of heme oxygenase is highest in the spleen, where senescent erythrocytes are sequestrated and destroyed. |
| 配列類似性 | Belongs to the heme oxygenase family. |
| 細胞内局在 | Microsome. Endoplasmic reticulum. |

画像



All lanes : Anti-Heme Oxygenase 1 antibody [EPR1390Y] (ab68477) at 1/10000 dilution

- Lane 1 :** Wild-type A549 cell lysate
- Lane 2 :** HMOX1 knockout A549 cell lysate
- Lane 3 :** Human Spleen tissue lysate
- Lane 4 :** HL-60 cell lysate
- Lane 5 :** MCF7 cell lysate
- Lane 6 :** HeLa cell lysate
- Lane 7 :** A549 cell lysate

Lysates/proteins at 20 µg per lane.

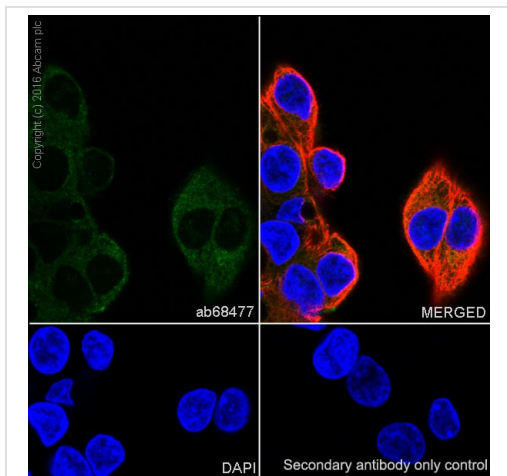
Performed under reducing conditions.

Predicted band size: 33 kDa

Observed band size: 33 kDa

Lanes 1 - 7: Merged signal (red and green). Green - ab68477 observed at 33 kDa. Red - loading control **ab7291** (Mouse anti-Alpha Tubulin [DM1A]) observed at 55 kDa.

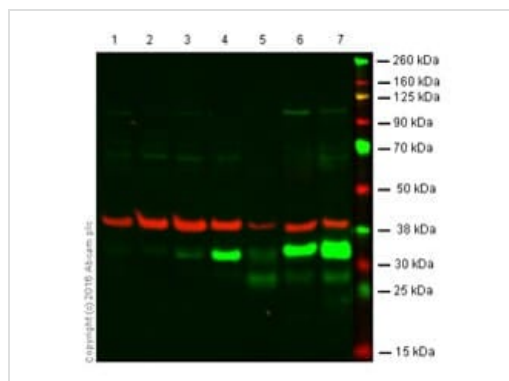
ab68477 was shown to react with Heme Oxygenase 1 in wild-type A549 cells in Western blot with loss of signal observed in HMOX1 knockout cell line **ab269503** (knockout cell lysate **ab269665**). Wild-type A549 and HMOX1 knockout cell lysates were subjected to SDS-PAGE. Membranes were blocked in fluorescent western blot (TBS-based) blocking solution before incubation with ab68477 and **ab7291** (Mouse anti-Alpha Tubulin [DM1A]) overnight at 4 °C at a 1 in 10000 dilution and a 1 in 20000 dilution respectively. Blots were incubated with Goat anti-Rabbit IgG H&L (IRDye® 800CW) preabsorbed (**ab216773**) and Goat anti-Mouse IgG H&L (IRDye® 680RD) preabsorbed (**ab216776**) secondary antibodies at 1 in 20000 dilution for 1 h at room temperature before imaging.



Immunocytochemistry/ Immunofluorescence - Anti-Heme Oxygenase 1 antibody [EPR1390Y] (ab68477)

Immunocytochemistry/Immunofluorescence analysis of HepG2 (Human liver hepatocellular carcinoma cell line) cells labeling Heme Oxygenase 1 with purified ab68477 at 1/100. Cells were fixed with 4% paraformaldehyde and permeabilized with 0.1% Triton X-100. A goat anti rabbit IgG (Alexa Fluor® 488) (**ab150077**) was used as the secondary antibody at a dilution of 1/1000. DAPI was used as a nuclear counterstain.

Negative control 1: PBS only.



Western blot - Anti-Heme Oxygenase 1 antibody [EPR1390Y] (ab68477)

All lanes : Anti-Heme Oxygenase 1 antibody [EPR1390Y] (ab68477) at 1/1000 dilution

Lane 1 : Hek293

Lane 2 : HL60

Lane 3 : HeLa

Lane 4 : A549

Lane 5 : Hu spleen

Lane 6 : Ms spleen

Lane 7 : Rt spleen

Lysates/proteins at 10 µg per lane.

Secondary

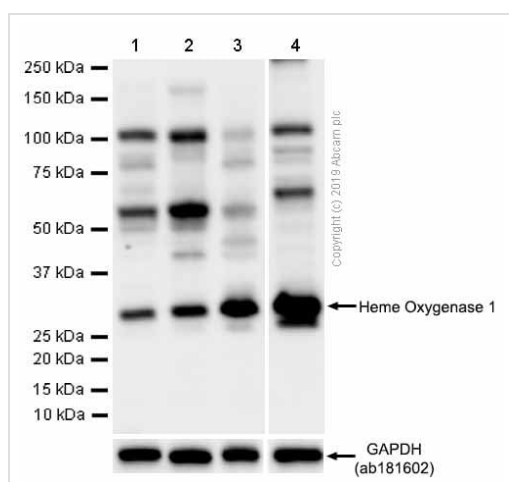
All lanes : IRDye® 800CW Goat anti Rabbit

Predicted band size: 33 kDa

Observed band size: 32 kDa

Hek293 & HL60 presumed negative or very low expression.

Loading control GAPDH at 38kDa



Western blot - Anti-Heme Oxygenase 1 antibody [EPR1390Y] (ab68477)

All lanes : Anti-Heme Oxygenase 1 antibody [EPR1390Y] (ab68477) at 1/1000 dilution

Lane 1 : HEK-293 (Human embryonic kidney epithelial cell) whole cell lysates with 5% NFDm/TBST

Lane 2 : NIH/3T3 (Mouse embryonic fibroblast) whole cell lysates with 5% NFDm/TBST

Lane 3 : A549 (Human lung carcinoma epithelial cell) whole cell lysates with 5% NFDm/TBST

Lane 4 : Mouse spleen lysates with 5% NFDm/TBST

Lysates/proteins at 20 µg per lane.

Secondary

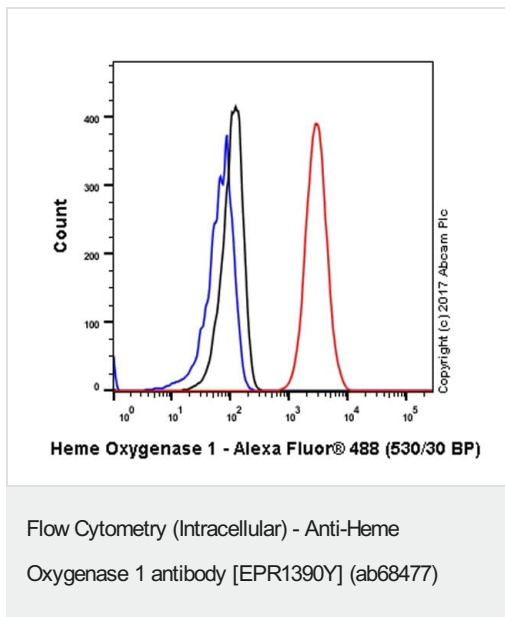
All lanes : Goat Anti-Rabbit IgG H&L (HRP) ([ab97051](#)) at 1/20000 dilution

Predicted band size: 33 kDa

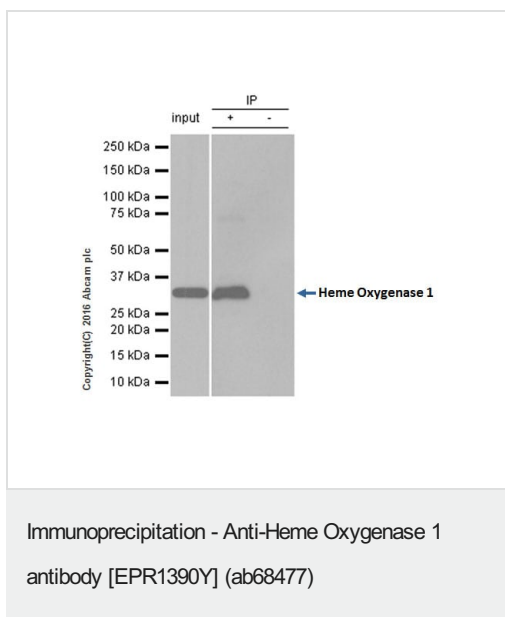
Observed band size: 33 kDa

Exposure time: 10 seconds

We are unsure how to define the extra bands.



Intracellular Flow Cytometry analysis of A549 (human lung carcinoma) cells labeling with purified [ab68477](#) at 1/200 dilution (1ug/ml) (Red). Cells were fixed with 4% paraformaldehyde and permeabilised with 90% methanol. A Goat anti rabbit IgG (Alexa Fluor® 488) ([ab150077](#)) (1/2000 dilution) was used as the secondary antibody. Rabbit monoclonal IgG (Black) ([ab172730](#)) was used as an isotype control. Cell without incubation with primary antibody and secondary antibody (Blue) were used as unlabeled control.



[ab68477](#) (purified) at 1/20 immunoprecipitating Heme Oxygenase 1 in A549 (Human lung carcinoma cell line) whole cell lysate.

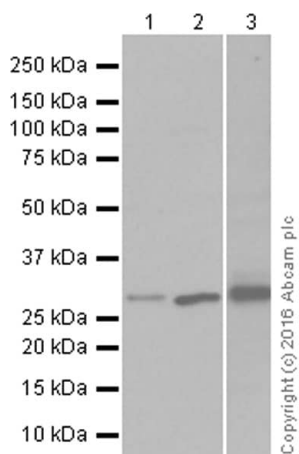
Lane 1 (input): A549 whole cell lysate (10ug).

Lane 2 (+): [ab68477](#) + A549 whole cell lysate.

Lane 3 (-): Rabbit monoclonal IgG ([ab172730](#)) instead of [ab133267](#) in HeLa whole cell lysate.

Blocking buffer and concentration: 5% NFDM/TBST.

Diluting buffer and concentration: 5% NFDM /TBST.



Western blot - Anti-Heme Oxygenase 1 antibody [EPR1390Y] (ab68477)

All lanes : Anti-Heme Oxygenase 1 antibody [EPR1390Y] (ab68477) at 1/20000 dilution (purified)

Lane 1 : Rat kidney lysate

Lane 2 : Rat spleen lysate

Lane 3 : Mouse kidney lysate

Lysates/proteins at 20 µg per lane.

Secondary

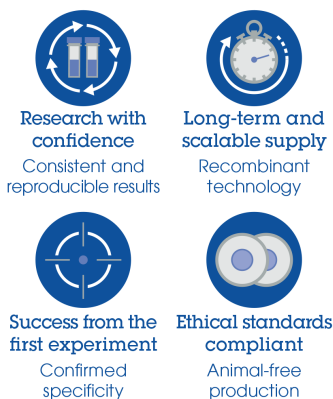
All lanes : Goat Anti-Rabbit IgG H&L (HRP) ([ab97051](#)) at 1/20000 dilution (Goat Anti-Rabbit IgG, (H+L), Peroxidase conjugated)

Predicted band size: 33 kDa

Observed band size: 33 kDa

Blocking and dilution buffer: 5% NFDM/TBST

Why choose a recombinant antibody?



Anti-Heme Oxygenase 1 antibody [EPR1390Y] (ab68477)

Please note: All products are "FOR RESEARCH USE ONLY. NOT FOR USE IN DIAGNOSTIC PROCEDURES"

Our Abpromise to you: Quality guaranteed and expert technical support

- Replacement or refund for products not performing as stated on the datasheet
- Valid for 12 months from date of delivery

- Response to your inquiry within 24 hours
- We provide support in Chinese, English, French, German, Japanese and Spanish
- Extensive multi-media technical resources to help you
- We investigate all quality concerns to ensure our products perform to the highest standards

If the product does not perform as described on this datasheet, we will offer a refund or replacement. For full details of the Abpromise, please visit <https://www.abcam.co.jp/abpromise> or contact our technical team.

Terms and conditions

- Guarantee only valid for products bought direct from Abcam or one of our authorized distributors