

Anti-HEF1/NEDD-9 antibody ab88584

[1 References](#) [画像数 3](#)

製品の概要

製品名	Anti-HEF1/NEDD-9 antibody
製品の詳細	Mouse polyclonal to HEF1/NEDD-9
由来種	Mouse
アプリケーション	適用あり: WB, ICC/IF
種交差性	交差種: Human
免疫原	Recombinant full length protein within Human HEF1/NEDD-9. The exact immunogen sequence used to generate this antibody is proprietary information. If additional detail on the immunogen is needed to determine the suitability of the antibody for your needs, please contact our Scientific Support team to discuss your requirements.
ポジティブ・コントロール	293 cell lysate, HEF1/NEDD-9 transfected 293T lysate, HeLa cells.
特記事項	<p>The Life Science industry has been in the grips of a reproducibility crisis for a number of years. Abcam is leading the way in addressing this with our range of recombinant monoclonal antibodies and knockout edited cell lines for gold-standard validation. Please check that this product meets your needs before purchasing.</p> <p>If you have any questions, special requirements or concerns, please send us an inquiry and/or contact our Support team ahead of purchase. Recommended alternatives for this product can be found below, along with publications, customer reviews and Q&As</p>

製品の特性

製品の状態	Liquid
保存方法	Shipped at 4°C. Upon delivery aliquot and store at -20°C or -80°C. Avoid repeated freeze / thaw cycles.
バッファー	pH: 7.40 Constituent: 100% PBS
精製度	Protein A purified
ポリモノ	ポリクローナル
アイソタイプ	IgG

アプリケーション

The Abpromise guarantee

Abpromise保証は、次のテスト済みアプリケーションにおけるab88584の使用に適用されます

アプリケーションノートには、推奨の開始希釈率がありますが、適切な希釈率につきましてはご検討ください。

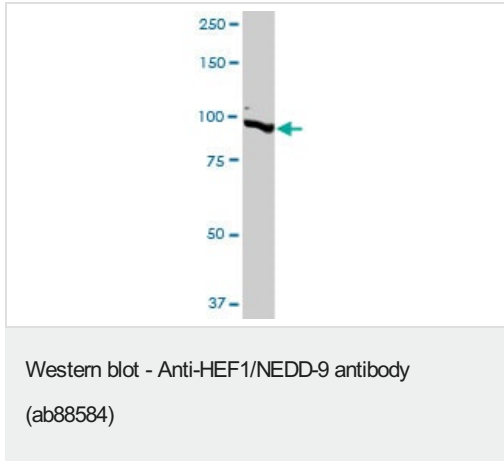
アプリケーション	Abreviews	特記事項
WB		Use a concentration of 1 - 5 µg/ml. Predicted molecular weight: 93 kDa.
ICC/IF		Use a concentration of 10 µg/ml.

ターゲット情報

機能	Docking protein which plays a central coordinating role for tyrosine-kinase-based signaling related to cell adhesion. May function in transmitting growth control signals between focal adhesions at the cell periphery and the mitotic spindle in response to adhesion or growth factor signals initiating cell proliferation. May play an important role in integrin beta-1 or B cell antigen receptor (BCR) mediated signaling in B- and T-cells. Integrin beta-1 stimulation leads to recruitment of various proteins including CRK, NCK and SHPTP2 to the tyrosine phosphorylated form.
組織特異性	Widely expressed. Higher levels detected in kidney, lung, and placenta. Also detected in T-cells, B-cells and diverse cell lines. The protein has been detected in lymphocytes, in diverse cell lines, and in lung tissues.
配列類似性	Belongs to the CAS family. Contains 1 SH3 domain.
ドメイン	Contains a central domain containing multiple potential SH2-binding sites and a C-terminal domain containing a divergent helix-loop-helix (HLH) motif. The SH2-binding sites putatively bind CRK, NCK and ABL SH2 domains. The HLH motif confers specific interaction with the HLH proteins ID2, E12 and E47. It is absolutely required for the induction of pseudohyphal growth in yeast and mediates homodimerization and heterodimerization with p130cas. The SH3 domain interacts with two proline-rich regions of focal adhesion kinase.
翻訳後修飾	Cell cycle-regulated processing produces four isoforms: p115, p105, p65, and p55. Isoform p115 arises from p105 phosphorylation and appears later in the cell cycle. Isoform p55 arises from p105 as a result of cleavage at a caspase cleavage-related site and it appears specifically at mitosis. The p65 isoform is poorly detected. Focal adhesion kinase 1 phosphorylates the protein at the YDYVHL motif (conserved among all cas proteins). The SRC family kinases (FYN, SRC, LCK and CRK) are recruited to the phosphorylated sites and can phosphorylate other tyrosine residues. Ligation of either integrin beta-1 or B-cell antigen receptor on tonsillar B-cells and B-cell lines promotes tyrosine phosphorylation and both integrin and BCR-mediated tyrosine phosphorylation requires an intact actin network. In fibroblasts transformation with oncogene v-ABL results in an increase in tyrosine phosphorylation. Transiently phosphorylated following CD3 cross-linking and this phosphorylated form binds to CRK and C3G. A mutant lacking the SH3 domain is phosphorylated upon CD3 cross-linking but not upon integrin beta-1 cross-linking. Tyrosine phosphorylation occurs upon stimulation of the G-protein coupled C1a calcitonin receptor in rabbit. Calcitonin-stimulated tyrosine phosphorylation is mediated by calcium- and protein kinase C-dependent mechanisms and requires the integrity of the actin cytoskeleton.
細胞内局在	Cytoplasm > cytoskeleton > spindle and Cytoplasm > cell cortex. Nucleus. Golgi apparatus. Cell projection > lamellipodium. Cytoplasm. Cell junction > focal adhesion. Localizes to both the cell nucleus and the cell periphery and is differently localized in fibroblasts and epithelial cells. In

fibroblasts is predominantly nuclear and in some cells is present in the Golgi apparatus. In epithelial cells localized predominantly in the cell periphery with particular concentration in lamellipodia but is also found in the nucleus. Isoforms p105 and p115 are predominantly cytoplasmic and associate with focal adhesions while p55 associates with mitotic spindle.

画像



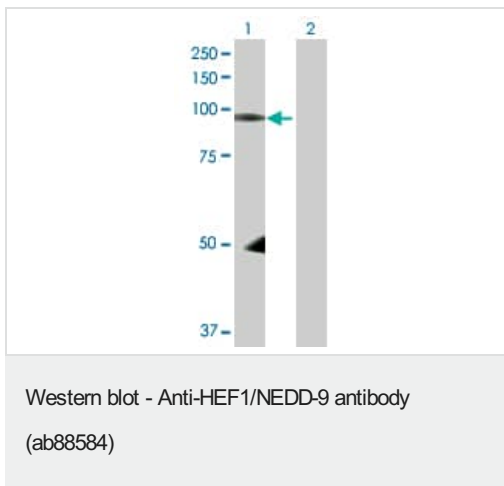
Anti-HEF1/NEDD-9 antibody (ab88584) at 1 $\mu\text{g/ml}$ + 293 cell lysate at 50 μg

Secondary

Goat anti-Mouse IgG (H+L) HRP at 1/5000 dilution

Predicted band size: 93 kDa

Observed band size: 93 kDa



All lanes : Anti-HEF1/NEDD-9 antibody (ab88584) at 1 $\mu\text{g/ml}$

Lane 1 : HEF1 transfected 293T cell lysate

Lane 2 : Non-transfected lysate

Lysates/proteins at 25 μg per lane.

Secondary

All lanes : Goat anti-Mouse IgG (H+L) HRP at 1/5000 dilution

Predicted band size: 93 kDa

Observed band size: 93 kDa



ab88584 at 10 $\mu\text{g/ml}$ staining HEF1/NEDD-9 in HeLa cells by Immunofluorescence.

Please note: All products are "FOR RESEARCH USE ONLY. NOT FOR USE IN DIAGNOSTIC PROCEDURES"

Our Abpromise to you: Quality guaranteed and expert technical support

- Replacement or refund for products not performing as stated on the datasheet
- Valid for 12 months from date of delivery
- Response to your inquiry within 24 hours

- We provide support in Chinese, English, French, German, Japanese and Spanish
- Extensive multi-media technical resources to help you
- We investigate all quality concerns to ensure our products perform to the highest standards

If the product does not perform as described on this datasheet, we will offer a refund or replacement. For full details of the Abpromise, please visit <https://www.abcam.co.jp/abpromise> or contact our technical team.

Terms and conditions

- Guarantee only valid for products bought direct from Abcam or one of our authorized distributors