


Anti-HEC1/HEC antibody [EPR5342] ab109496

リコンビナント RabMAb[®]

画像数 2

製品の概要

製品名	Anti-HEC1/HEC antibody [EPR5342]
製品の詳細	Rabbit monoclonal [EPR5342] to HEC1/HEC
由来種	Rabbit
アプリケーション	適用あり: WB 適用なし: Flow Cyt, ICC/IF or IHC-P
種交差性	交差種: Human 交差が予測される動物種: Mouse, Rat 
免疫原	Synthetic peptide. This information is proprietary to Abcam and/or its suppliers.
ポジティブ・コントロール	Jurkat, HeLa, NCCIT, and Human spleen lysates.
特記事項	This product is a recombinant monoclonal antibody, which offers several advantages including: - High batch-to-batch consistency and reproducibility - Improved sensitivity and specificity - Long-term security of supply - Animal-free production For more information see here . Our RabMAb [®] technology is a patented hybridoma-based technology for making rabbit monoclonal antibodies. For details on our patents, please refer to RabMAb[®] patents .

製品の特性

製品の状態	Liquid
保存方法	Shipped at 4°C. Store at -20°C. Stable for 12 months at -20°C.
バッファー	pH: 7.20 Preservative: 0.05% Sodium azide Constituents: 0.1% BSA, 40% Glycerol (glycerin, glycerine), 9.85% Tris glycine, 50% Tissue culture supernatant
精製度	Protein A purified
ポリ/モノ	モノクローナル
クローン名	EPR5342

アイソタイプ

IgG

アプリケーション

The Abpromise guarantee **Abpromise保証は、次のテスト済みアプリケーションにおけるab109496の使用に適用されず**
アプリケーションノートには、推奨の開始希釈率がありますが、適切な希釈率につきましてはご検討ください。

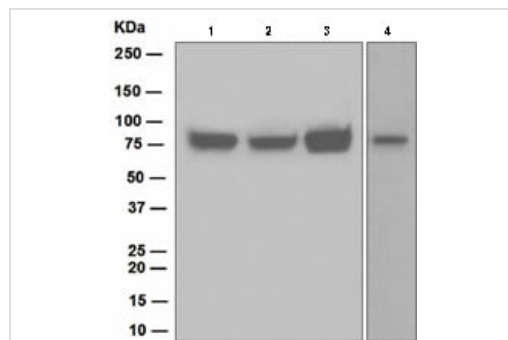
アプリケーション	Abreviews	特記事項
WB		1/10000 - 1/50000. Predicted molecular weight: 74 kDa.

追加情報 Is unsuitable for Flow Cyt, ICC/IF or IHC-P.

ターゲット情報

機能	Acts as a component of the essential kinetochore-associated NDC80 complex, which is required for chromosome segregation and spindle checkpoint activity. Required for kinetochore integrity and the organization of stable microtubule binding sites in the outer plate of the kinetochore.
配列類似性	Belongs to the NDC80/HEC1 family.
発生段階	Expression peaks in mitosis.
翻訳後修飾	Phosphorylation begins in S phase of the cell cycle and peaks in mitosis. Phosphorylated by NEK2. May also be phosphorylated by AURKA and AURKB.
細胞内局在	Nucleus. Chromosome > centromere > kinetochore. Localizes to kinetochores from late prophase to anaphase. Localizes specifically to the outer plate of the kinetochore.

画像



Western blot - Anti-HEC1/HEC antibody [EPR5342]
(ab109496)

All lanes : Anti-HEC1/HEC antibody [EPR5342] (ab109496) at
1/10000 dilution

Lane 1 : Jurkat lysate

Lane 2 : HeLa lysate

Lane 3 : NCCIT lysate

Lane 4 : Human spleen lysate

Lysates/proteins at 10 µg per lane.

Predicted band size: 74 kDa

Why choose a recombinant antibody?



Research with confidence
Consistent and reproducible results



Long-term and scalable supply
Recombinant technology



Success from the first experiment
Confirmed specificity



Ethical standards compliant
Animal-free production

Anti-HEC1/HEC antibody [EPR5342] (ab109496)

Please note: All products are "FOR RESEARCH USE ONLY. NOT FOR USE IN DIAGNOSTIC PROCEDURES"

Our Abpromise to you: Quality guaranteed and expert technical support

- Replacement or refund for products not performing as stated on the datasheet
- Valid for 12 months from date of delivery
- Response to your inquiry within 24 hours
- We provide support in Chinese, English, French, German, Japanese and Spanish
- Extensive multi-media technical resources to help you
- We investigate all quality concerns to ensure our products perform to the highest standards

If the product does not perform as described on this datasheet, we will offer a refund or replacement. For full details of the Abpromise, please visit <https://www.abcam.co.jp/abpromise> or contact our technical team.

Terms and conditions

- Guarantee only valid for products bought direct from Abcam or one of our authorized distributors