




Anti-HDAC7 antibody [HDAC7-97] ab50212

★★★★★ [1 Abreviews](#) [7 References](#) [画像数 1](#)

製品の概要

製品名	Anti-HDAC7 antibody [HDAC7-97]
製品の詳細	Mouse monoclonal [HDAC7-97] to HDAC7
由来種	Mouse
アプリケーション	適用あり: WB
種交差性	交差種: Human 交差が予測される動物種: Rat 
免疫原	Synthetic peptide: YRTLEPLDTEGAARSVLSS conjugated to KLH, corresponding to amino acids 137-155 of Mouse HDAC7 <div>  Run BLAST with  Run BLAST with </div>
ポジティブ・コントロール	WB: human embryonal kidney 293T cells expressing recombinant human HDAC7.
特記事項	<p>The Life Science industry has been in the grips of a reproducibility crisis for a number of years. Abcam is leading the way in addressing this with our range of recombinant monoclonal antibodies and knockout edited cell lines for gold-standard validation. Please check that this product meets your needs before purchasing.</p> <p>If you have any questions, special requirements or concerns, please send us an inquiry and/or contact our Support team ahead of purchase. Recommended alternatives for this product can be found below, along with publications, customer reviews and Q&As</p>

製品の特性

製品の状態	Liquid
保存方法	Shipped at 4°C. Store at +4°C short term (1-2 weeks). Upon delivery aliquot. Store at -20°C or -80°C. Avoid freeze / thaw cycle.
バッファー	pH: 7.40 Preservative: 0.097% Sodium azide Constituent: 0.0268% PBS
特記事項(精製)	Ab50212 is a purified IgG.
ポリ/モノ	モノクローナル
クローン名	HDAC7-97

ミエローマ	NS1
アイソタイプ	IgG1

アプリケーション

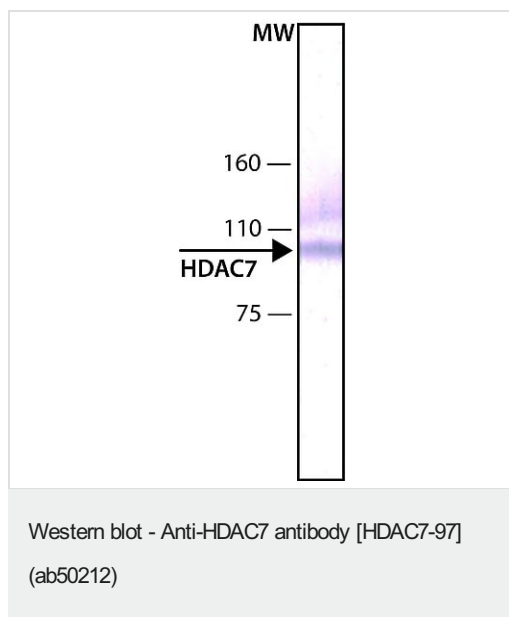
The Abpromise guarantee Abpromise保証は、次のテスト済みアプリケーションにおけるab50212の使用に適用されます
アプリケーションノートには、推奨の開始希釈率がありますが、適切な希釈率につきましてはご検討ください。

アプリケーション	Abreviews	特記事項
WB	★★★★★ (1)	Use a concentration of 0.25 - 0.5 µg/ml. Predicted molecular weight: 103 kDa.

ターゲット情報

機能	Responsible for the deacetylation of lysine residues on the N-terminal part of the core histones (H2A, H2B, H3 and H4). Histone deacetylation gives a tag for epigenetic repression and plays an important role in transcriptional regulation, cell cycle progression and developmental events. Histone deacetylases act via the formation of large multiprotein complexes. Involved in muscle maturation by repressing transcription of myocyte enhancer factors such as MEF2A, MEF2B and MEF2C. During muscle differentiation, it shuttles into the cytoplasm, allowing the expression of myocyte enhancer factors (By similarity). May be involved in Epstein-Barr virus (EBV) latency, possibly by repressing the viral BZLF1 gene.
配列類似性	Belongs to the histone deacetylase family. HD type 2 subfamily.
ドメイン	The nuclear export sequence mediates the shuttling between the nucleus and the cytoplasm.
翻訳後修飾	May be phosphorylated by CaMK1. Phosphorylated by the PKC kinases PKN1 and PKN2, impairing nuclear import.
細胞内局在	Nucleus. Cytoplasm. In the nucleus, it associates with distinct subnuclear dot-like structures. Shuttles between the nucleus and the cytoplasm. Treatment with EDN1 results in shuttling from the nucleus to the perinuclear region. The export to cytoplasm depends on the interaction with the 14-3-3 protein YWHAЕ and may be due to its phosphorylation.

画像



Anti-HDAC7 antibody [HDAC7-97] (ab50212) at 0.25 µg/ml +
embryonal kidney 293T cells

Predicted band size: 103 kDa

Please note: All products are "FOR RESEARCH USE ONLY. NOT FOR USE IN DIAGNOSTIC PROCEDURES"

Our Abpromise to you: Quality guaranteed and expert technical support

- Replacement or refund for products not performing as stated on the datasheet
- Valid for 12 months from date of delivery
- Response to your inquiry within 24 hours
- We provide support in Chinese, English, French, German, Japanese and Spanish
- Extensive multi-media technical resources to help you
- We investigate all quality concerns to ensure our products perform to the highest standards

If the product does not perform as described on this datasheet, we will offer a refund or replacement. For full details of the Abpromise, please visit <https://www.abcam.co.jp/abpromise> or contact our technical team.

Terms and conditions

- Guarantee only valid for products bought direct from Abcam or one of our authorized distributors