

### Anti-hCG beta antibody ab53087

[10 References](#) [画像数 2](#)

#### 製品の概要

---

製品名	Anti-hCG beta antibody
製品の詳細	Rabbit polyclonal to hCG beta
由来種	Rabbit
アプリケーション	<b>適用あり:</b> WB, IHC-P
種交差性	<b>交差種:</b> Mouse, Human
免疫原	Synthetic peptide. This information is proprietary to Abcam and/or its suppliers.
ポジティブ・コントロール	NIH/3T3 cell extract; Paraffin embedded human breast carcinoma tissue.
特記事項	<p>The Life Science industry has been in the grips of a reproducibility crisis for a number of years. Abcam is leading the way in addressing this with our range of recombinant monoclonal antibodies and knockout edited cell lines for gold-standard validation. Please check that this product meets your needs before purchasing.</p> <p>If you have any questions, special requirements or concerns, please send us an inquiry and/or contact our Support team ahead of purchase. Recommended alternatives for this product can be found below, along with publications, customer reviews and Q&amp;As</p>

#### 製品の特性

---

製品の状態	Liquid
保存方法	Shipped at 4°C. Store at -20°C. Stable for 12 months at -20°C.
バッファー	pH: 7.40 Preservative: 0.02% Sodium azide Constituents: 0.87% Sodium chloride, 50% Glycerol (glycerin, glycerine), PBS
精製度	Without Mg+2 and Ca+2 Immunogen affinity purified
ポリ/モノ	ポリクローナル
アイソタイプ	IgG

#### アプリケーション

---

## The Abpromise guarantee

**Abpromise保証は、次のテスト済みアプリケーションにおけるab53087の使用に適用されます**

アプリケーションノートには、推奨の開始希釈率がありますが、適切な希釈率につきましてはご検討ください。

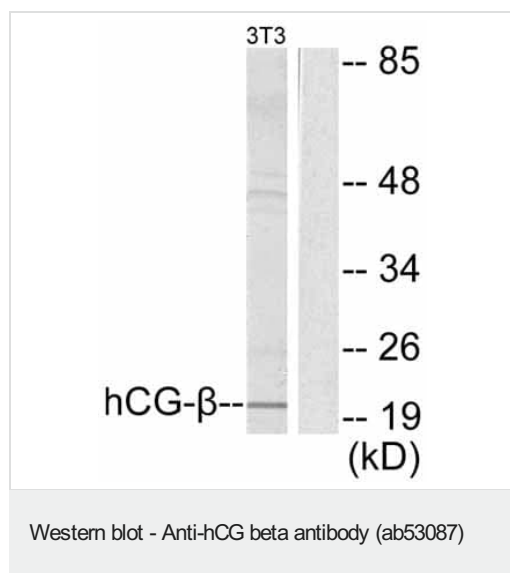
アプリケーション	Abreviews	特記事項
WB		1/300 - 1/1000. Detects a band of approximately 18 kDa (predicted molecular weight: 18 kDa).
IHC-P		Use at an assay dependent concentration.

## ターゲット情報

### 関連性

Function: Stimulates the ovaries to synthesize the steroids that are essential for the maintenance of pregnancy. Tissue specificity: Placenta. Similarity: Belongs to the glycoprotein hormones subunit beta family. Developmental stage: Made by the first trimester placenta.

## 画像

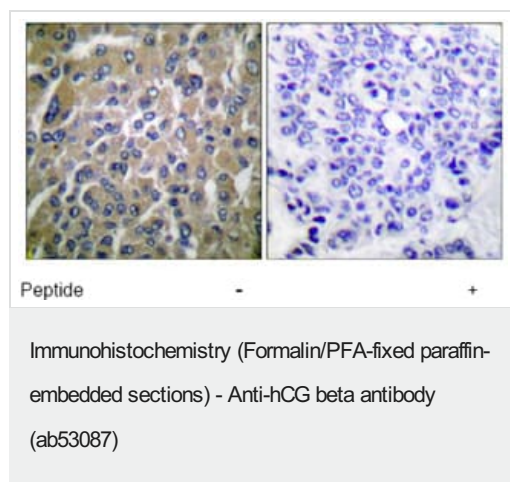


**All lanes :** Anti-hCG beta antibody (ab53087) at 1/300 dilution

**Lane 1 :** NIH/3T3 cell extract

**Lane 2 :** NIH/3T3 cell extract with peptide

**Predicted band size:** 18 kDa



Immunohistochemical analysis of paraffin-embedded human breast carcinoma tissue using hCG β antibody, ab53087, at 1/50 dilution.

**Please note:** All products are "FOR RESEARCH USE ONLY. NOT FOR USE IN DIAGNOSTIC PROCEDURES"

### **Our Abpromise to you: Quality guaranteed and expert technical support**

---

- Replacement or refund for products not performing as stated on the datasheet
- Valid for 12 months from date of delivery
- Response to your inquiry within 24 hours
  
- We provide support in Chinese, English, French, German, Japanese and Spanish
- Extensive multi-media technical resources to help you
- We investigate all quality concerns to ensure our products perform to the highest standards

If the product does not perform as described on this datasheet, we will offer a refund or replacement. For full details of the Abpromise, please visit <https://www.abcam.co.jp/abpromise> or contact our technical team.

### **Terms and conditions**

---

- Guarantee only valid for products bought direct from Abcam or one of our authorized distributors