

Anti-hCG antibody ab9376

★★★★★ [1 Abreviews](#) [6 References](#) [画像数 2](#)

製品の概要

製品名	Anti-hCG antibody
製品の詳細	Rabbit polyclonal to hCG
由来種	Rabbit
特異性	This antibody reacts with hCG. It stains strongly with the human placenta and placental trophoblasts. No non-specific staining with any other tissue has been observed.
アプリケーション	適用あり: IHC-P, IHC-Fr, WB
種交差性	交差種: Human
免疫原	Beta chain of human chorionic gonadotropin.
特記事項	<p>The Life Science industry has been in the grips of a reproducibility crisis for a number of years. Abcam is leading the way in addressing this with our range of recombinant monoclonal antibodies and knockout edited cell lines for gold-standard validation. Please check that this product meets your needs before purchasing.</p> <p>If you have any questions, special requirements or concerns, please send us an inquiry and/or contact our Support team ahead of purchase. Recommended alternatives for this product can be found below, along with publications, customer reviews and Q&As</p>

製品の特性

製品の状態	Liquid
保存方法	Shipped at 4°C. Store at +4°C short term (1-2 weeks). Store at -20°C or -80°C. Avoid freeze / thaw cycle.
バッファー	pH: 7.3
精製度	Protein A purified
ポリ/モノ	ポリクローナル
アイソタイプ	IgG

アプリケーション

The Abpromise guarantee **Abpromise保証は、次のテスト済みアプリケーションにおけるab9376の使用に適用されます**
アプリケーションノートには、推奨の開始希釈率がありますが、適切な希釈率につきましてはご検討ください。

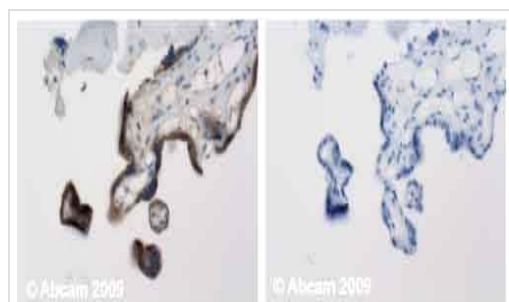
アプリケーション	Abreviews	特記事項
IHC-P		Use at an assay dependent concentration. This antibody may be diluted to a titer of 1:100-1:500 in an ABC method. Staining Protocol: We suggest an incubation period of 30-60 minutes at room temperature. However, depending upon the fixation conditions and the staining system employed, optimal incubation conditions and antibody dilutions should be determined by the user. Although not required, proteolytic
IHC-Fr		Use at an assay dependent concentration.
WB	★★★★★ (1)	Use at an assay dependent concentration. Predicted molecular weight: 18 kDa.

ターゲット情報

関連性 Human chorionic gonadotropin (hCG) is a glycoprotein hormone produced by trophoblastic cells of the placenta beginning 10 to 12 days after conception. Maintenance of the fetus in the first trimester of pregnancy requires the production of hCG, which binds to the corpus luteum of the ovary which is stimulated to produce progesterone which in turn maintains the secretory endometrium. hCG is present only in trace amounts in non pregnant urine and sera. It rises sharply during pregnancy. HCG is composed of two non identical, non covalently linked polypeptide chains designated as the a and b subunits. The a subunit of HCG is nearly identical to that of thyroid stimulating hormone (TSH), follicle stimulating hormone (FSH) and luteinizing hormone (LH). A germ cell tumor which is positive for cytokeratin, placental alkaline phosphatase (PLAP) and HCG but negative for EMA and AFP is probably a choriocarcinoma.

細胞内局在 Secreted

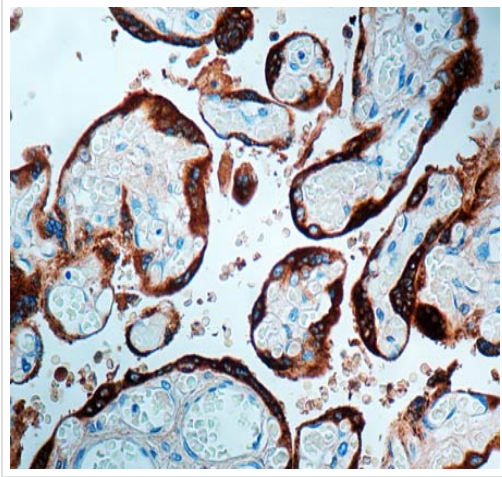
画像



Immunohistochemistry (Formalin/PFA-fixed paraffin-embedded sections) - Anti-hCG antibody (ab9376)

Human normal placenta. Staining is localised extracellular and in the cytoplasm. Left panel: with primary antibody at 2 ug/ml. Right panel: isotype control. Sections were stained using an automated system DAKO Autostainer Plus , at room temperature: sections were rehydrated and antigen retrieved with the Dako 3 in 1 AR buffers citrate EDTA pH 9.0 in a DAKO PT Link. Slides were peroxidase blocked in 3% H₂O₂ in methanol for 10 mins. They were then blocked with Dako Protein block for 10 minutes (containing casein 0.25% in PBS) then incubated with primary antibody for 20 min and detected with Dako envision flex amplification kit for rabbit for 30 minutes. Colorimetric detection was completed with Diaminobenzidine for 5 minutes. Slides were counterstained with Haematoxylin and coverslipped under DePeX. Please note that for manual staining we recommend to optimize the primary antibody concentration and incubation time (overnight

incubation), and amplification may be required.



Immunohistochemistry (Formalin/PFA-fixed paraffin-embedded sections) - Anti-hCG antibody (ab9376)

ab9376 staining hCG in formalin-fixed, paraffin-embedded Human placenta by Immunohistochemistry.

Please note: All products are "FOR RESEARCH USE ONLY. NOT FOR USE IN DIAGNOSTIC PROCEDURES"

Our Abpromise to you: Quality guaranteed and expert technical support

- Replacement or refund for products not performing as stated on the datasheet
- Valid for 12 months from date of delivery
- Response to your inquiry within 24 hours
- We provide support in Chinese, English, French, German, Japanese and Spanish
- Extensive multi-media technical resources to help you
- We investigate all quality concerns to ensure our products perform to the highest standards

If the product does not perform as described on this datasheet, we will offer a refund or replacement. For full details of the Abpromise, please visit <https://www.abcam.co.jp/abpromise> or contact our technical team.

Terms and conditions

- Guarantee only valid for products bought direct from Abcam or one of our authorized distributors