

Anti-HA tag antibody ab13834

★★★★★ [3 Abreviews](#) [10 References](#) [画像数 1](#)

製品の概要

製品名	Anti-HA tag antibody
製品の詳細	Rabbit polyclonal to HA tag
由来種	Rabbit
アプリケーション	適用あり: WB
種交差性	交差種: Species independent
免疫原	Synthetic peptide within HA tag conjugated to keyhole limpet haemocyanin. The exact sequence is proprietary. (Peptide available as ab13835)
ポジティブ・コントロール	WB: HEK-293 (Human) Whole Cell Lysate - expressing HA tag protein.
特記事項	<p>The Life Science industry has been in the grips of a reproducibility crisis for a number of years. Abcam is leading the way in addressing this with our range of recombinant monoclonal antibodies and knockout edited cell lines for gold-standard validation. Please check that this product meets your needs before purchasing.</p> <p>If you have any questions, special requirements or concerns, please send us an inquiry and/or contact our Support team ahead of purchase. Recommended alternatives for this product can be found below, along with publications, customer reviews and Q&As</p>

製品の特性

製品の状態	Liquid
保存方法	Shipped at 4°C. Store at +4°C short term (1-2 weeks). Upon delivery aliquot. Store at -20°C or -80°C. Avoid freeze / thaw cycle.
バッファー	<p>pH: 7.40</p> <p>Preservative: 0.02% Sodium azide</p> <p>Constituent: PBS</p> <p>Batches of this product that have a concentration < 1mg/ml may have BSA added as a stabilising agent. If you would like information about the formulation of a specific lot, please contact our scientific support team who will be happy to help.</p>
精製度	Immunogen affinity purified
ポリ/モノ	ポリクローナル

アプリケーション

The Abpromise guarantee

Abpromise保証は、次のテスト済みアプリケーションにおけるab13834の使用に適用されます

アプリケーションノートには、推奨の開始希釈率がありますが、適切な希釈率につきましてはご検討ください。

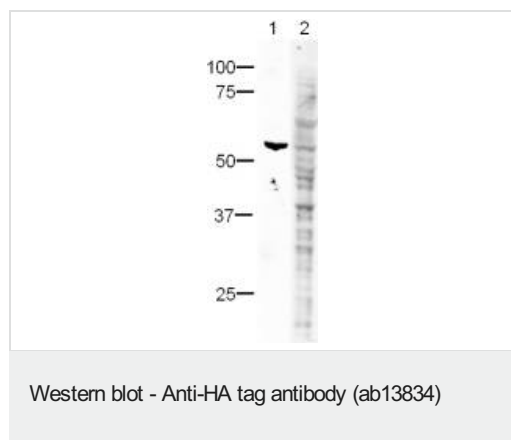
アプリケーション	Abreviews	特記事項
WB	★★★★★ (2)	1/500. Can be blocked with HA tag peptide (ab13835) .

ターゲット情報

関連性

Human influenza hemagglutinin (HA) is a surface glycoprotein required for the infectivity of the human virus. The HA tag is derived from the HA molecule corresponding to amino acids 98-106 has been extensively used as a general epitope tag in expression vectors. Many recombinant proteins have been engineered to express the HA tag, which does not appear to interfere with the bioactivity or the biodistribution of the recombinant protein. This tag facilitates the detection, isolation, and purification of the proteins.

画像



All lanes : Anti-HA tag antibody (ab13834) at 1/500 dilution

Lane 1 : HEK-293 (Human) Whole Cell Lysate - expressing HA tag protein (**ab20896**)

Lane 2 : HEK-293 (Human) Whole Cell Lysate - expressing HA tag protein (**ab20896**) with HA tag peptide (**ab13835**) at 1 µg/ml

Lysates/proteins at 10 µg per lane.

Secondary

All lanes : Alexa Fluor 680 Goat-anti-Rabbit IgG at 1/5000 dilution

Performed under reducing conditions.

Please note: All products are "FOR RESEARCH USE ONLY. NOT FOR USE IN DIAGNOSTIC PROCEDURES"

Our Abpromise to you: Quality guaranteed and expert technical support

- Replacement or refund for products not performing as stated on the datasheet
- Valid for 12 months from date of delivery
- Response to your inquiry within 24 hours

- We provide support in Chinese, English, French, German, Japanese and Spanish
- Extensive multi-media technical resources to help you
- We investigate all quality concerns to ensure our products perform to the highest standards

If the product does not perform as described on this datasheet, we will offer a refund or replacement. For full details of the Abpromise, please visit <https://www.abcam.co.jp/abpromise> or contact our technical team.

Terms and conditions

- Guarantee only valid for products bought direct from Abcam or one of our authorized distributors