

### Anti-GUCY1A2 antibody ab42108

★★★★☆ [1 Abreviews](#) [8 References](#) [画像数 2](#)

#### 製品の概要

製品名	Anti-GUCY1A2 antibody
製品の詳細	Rabbit polyclonal to GUCY1A2
由来種	Rabbit
アプリケーション	<b>適用あり:</b> IHC-P, WB
種交差性	<b>交差種:</b> Mouse, Rat
免疫原	Synthetic peptide corresponding to Human GUCY1A2 aa 692-708. Sequence: GICYFLEVR TGPKPPKP

 [Run BLAST with](#)

 [Run BLAST with](#)

#### 特記事項

The Life Science industry has been in the grips of a reproducibility crisis for a number of years. Abcam is leading the way in addressing this with our range of recombinant monoclonal antibodies and knockout edited cell lines for gold-standard validation. Please check that this product meets your needs before purchasing.

If you have any questions, special requirements or concerns, please send us an inquiry and/or contact our Support team ahead of purchase. Recommended alternatives for this product can be found below, along with publications, customer reviews and Q&As

#### 製品の特性

製品の状態	Liquid
保存方法	Shipped at 4°C. Upon delivery aliquot and store at -20°C or -80°C. Avoid repeated freeze / thaw cycles.
バッファー	Antibody stabilization buffer, with preservatives, consisting of Hepes, NaCl, KCl, glycerol, BSA and chaotropic agents.
精製度	Immunogen affinity purified
ポリ/モノ	ポリクローナル
アイソタイプ	IgG

#### アプリケーション

## The Abpromise guarantee

**Abpromise保証は、次のテスト済みアプリケーションにおけるab42108の使用に適用されます**

アプリケーションノートには、推奨の開始希釈率がありますが、適切な希釈率につきましてはご確認ください。

アプリケーション	Abreviews	特記事項
IHC-P		1/50 - 1/150.
WB		1/750. Detects a band of approximately 98 kDa (predicted molecular weight: 98 kDa).

## ターゲット情報

### 機能

Has guanylyl cyclase on binding to the beta-1 subunit.

Isoform 2 acts as a negative regulator of guanylyl cyclase activity as it forms non-functional heterodimers with the beta subunits.

### 組織特異性

Isoform 1 is expressed in fetal brain, liver, colon, endothelium and testis. Isoform 2 is expressed only in liver, colon and endothelium.

### 配列類似性

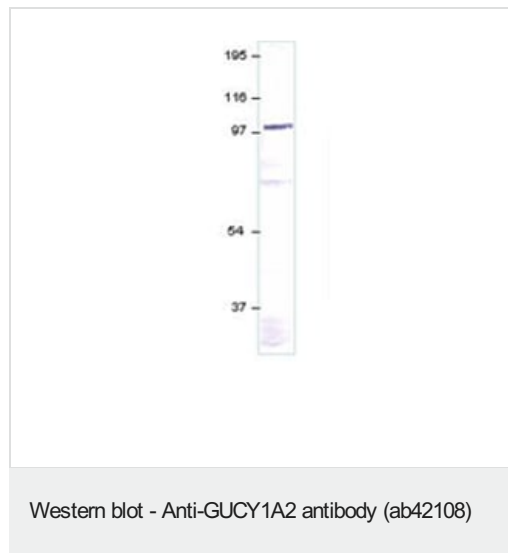
Belongs to the adenylyl cyclase class-4/guanylyl cyclase family.

Contains 1 guanylate cyclase domain.

### 細胞内局在

Cytoplasm.

## 画像

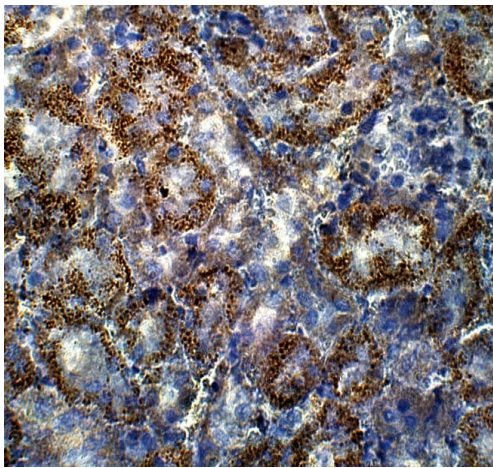


Anti-GUCY1A2 antibody (ab42108) at 1/750 dilution + Soluble

Guanylyl Cyclase alpha 2 Antibody Positive Control (Affinity Purified Recombinant full length protein)

**Predicted band size:** 98 kDa

**Observed band size:** 98 kDa



Immunohistochemistry (Formalin/PFA-fixed paraffin-embedded sections) analysis of mouse large intestine staining GUCY1A2 with ab42108 at a 1/100 dilution in IHC blocking buffer. DAB (brown) staining and Hematoxylin QS (blue) counterstain. 40X magnification.

Immunohistochemistry (Formalin/PFA-fixed paraffin-embedded sections) - Anti-GUCY1A2 antibody (ab42108)

**Please note:** All products are "FOR RESEARCH USE ONLY. NOT FOR USE IN DIAGNOSTIC PROCEDURES"

### Our Abpromise to you: Quality guaranteed and expert technical support

---

- Replacement or refund for products not performing as stated on the datasheet
- Valid for 12 months from date of delivery
- Response to your inquiry within 24 hours
- We provide support in Chinese, English, French, German, Japanese and Spanish
- Extensive multi-media technical resources to help you
- We investigate all quality concerns to ensure our products perform to the highest standards

If the product does not perform as described on this datasheet, we will offer a refund or replacement. For full details of the Abpromise, please visit <https://www.abcam.co.jp/abpromise> or contact our technical team.

### Terms and conditions

---

- Guarantee only valid for products bought direct from Abcam or one of our authorized distributors