

Anti-Guanylyl Cyclase alpha 1/GUCY1A3 antibody [EPR12270] ab172480

リコンビナント RabMAb

画像数 2

製品の概要

製品名	Anti-Guanylyl Cyclase alpha 1/GUCY1A3 antibody [EPR12270]
製品の詳細	Rabbit monoclonal [EPR12270] to Guanylyl Cyclase alpha 1/GUCY1A3
由来種	Rabbit
アプリケーション	適用あり: WB 適用なし: ICC/IF, IHC-P or IP
種交差性	交差種: Human 非交差種: Mouse, Rat
免疫原	Recombinant fragment within Human Guanylyl Cyclase alpha 1/GUCY1A3. The exact sequence is proprietary. Database link: Q02108
ポジティブ・コントロール	Human fetal kidney and fetal lung tissue lysate.
特記事項	This product is a recombinant monoclonal antibody, which offers several advantages including: - High batch-to-batch consistency and reproducibility - Improved sensitivity and specificity - Long-term security of supply - Animal-free production For more information see here . Our RabMAb [®] technology is a patented hybridoma-based technology for making rabbit monoclonal antibodies. For details on our patents, please refer to RabMAb[®] patents .

製品の特性

製品の状態	Liquid
保存方法	Shipped at 4°C. Store at +4°C short term (1-2 weeks). Upon delivery aliquot. Store at -20°C long term. Avoid freeze / thaw cycle.
バッファー	pH: 7.20 Preservative: 0.01% Sodium azide Constituents: 9% PBS, 40% Glycerol (glycerin, glycerine), 0.05% BSA, 50% Tissue culture supernatant

精製度	Tissue culture supernatant
ポリモノ	モノクローナル
クローン名	EPR12270
アイソタイプ	IgG

アプリケーション

The Abpromise guarantee **Abpromise保証は、次のテスト済みアプリケーションにおけるab172480の使用に適用されます**
 アプリケーションノートには、推奨の開始希釈率がありますが、適切な希釈率につきましてはご検討ください。

アプリケーション	Abreviews	特記事項
WB		1/1000 - 1/10000. Predicted molecular weight: 77 kDa.

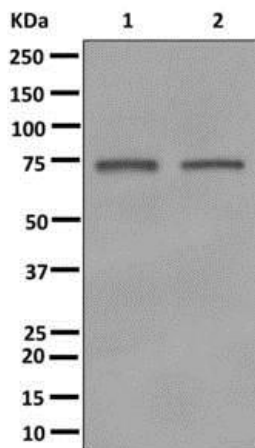
追加情報 Is unsuitable for ICC/IF, IHC-P or IP.

ターゲット情報

配列類似性 Belongs to the adenylyl cyclase class-4/guanylyl cyclase family.
 Contains 1 guanylate cyclase domain.

細胞内局在 Cytoplasm.

画像



All lanes : Anti-Guanylyl Cyclase alpha 1/GUCY1A3 antibody [EPR12270] (ab172480) at 1/1000 dilution

Lane 1 : Human fetal kidney tissue lysate

Lane 2 : Human fetal lung tissue lysate

Lysates/proteins at 10 µg per lane.

Predicted band size: 77 kDa

Western blot - Anti-Guanylyl Cyclase alpha
 1/GUCY1A3 antibody [EPR12270] (ab172480)

Why choose a recombinant antibody?



Research with confidence
Consistent and reproducible results



Long-term and scalable supply
Recombinant technology



Success from the first experiment
Confirmed specificity



Ethical standards compliant
Animal-free production

Anti-Guanylyl Cyclase alpha 1/GUCY1A3 antibody
[EPR12270] (ab172480)

Please note: All products are "FOR RESEARCH USE ONLY. NOT FOR USE IN DIAGNOSTIC PROCEDURES"

Our Abpromise to you: Quality guaranteed and expert technical support

- Replacement or refund for products not performing as stated on the datasheet
- Valid for 12 months from date of delivery
- Response to your inquiry within 24 hours
- We provide support in Chinese, English, French, German, Japanese and Spanish
- Extensive multi-media technical resources to help you
- We investigate all quality concerns to ensure our products perform to the highest standards

If the product does not perform as described on this datasheet, we will offer a refund or replacement. For full details of the Abpromise, please visit <https://www.abcam.co.jp/abpromise> or contact our technical team.

Terms and conditions

- Guarantee only valid for products bought direct from Abcam or one of our authorized distributors