

### Anti-GSTK1 antibody [EP1938Y] ab52759

KO 評価済 リコンビナント RabMAb

2 References 画像数 6

#### 製品の概要

製品名	Anti-GSTK1 antibody [EP1938Y]
製品の詳細	Rabbit monoclonal [EP1938Y] to GSTK1
由来種	Rabbit
アプリケーション	<b>適用あり:</b> ICC/IF, WB, IP, IHC-P <b>適用なし:</b> Flow Cyt
種交差性	<b>交差種:</b> Human
免疫原	Synthetic peptide within Human GSTK1 aa 150-250 (C terminal). The exact sequence is proprietary.
ポジティブ・コントロール	WB: HEK293T, HeLa and Daudi cell lysates; Fetal liver lysate. IHC-P: Human liver tissue. ICC: A549 cells. IP: Human heart lysate.
特記事項	<p>This product is a recombinant monoclonal antibody, which offers several advantages including:</p> <ul style="list-style-type: none"> <li>- High batch-to-batch consistency and reproducibility</li> <li>- Improved sensitivity and specificity</li> <li>- Long-term security of supply</li> <li>- Animal-free production</li> </ul> <p>For more information <a href="#">see here</a>.</p> <p>Our RabMAb<sup>®</sup> technology is a patented hybridoma-based technology for making rabbit monoclonal antibodies. For details on our patents, please refer to <a href="#">RabMAb<sup>®</sup> patents</a>.</p> <p>Mouse, Rat: We have preliminary internal testing data to indicate this antibody may not react with these species. Please contact us for more information.</p>

#### 製品の特性

製品の状態	Liquid
保存方法	Shipped at 4°C. Store at -20°C. Stable for 12 months at -20°C.
バッファー	<p>pH: 7.20</p> <p>Preservative: 0.05% Sodium azide</p> <p>Constituents: 0.1% BSA, 40% Glycerol (glycerin, glycerine), 9.85% Tris glycine, 50% Tissue culture supernatant</p>
精製度	Protein A purified

ポリ/モノ	モノクローナル
クローン名	EP1938Y
アイソタイプ	IgG

#### アプリケーション

**The Abpromise guarantee**      **Abpromise保証は、**次のテスト済みアプリケーションにおけるab52759の使用に適用されます  
アプリケーションノートには、推奨の開始希釈率がありますが、適切な希釈率につきましてはご検討ください。

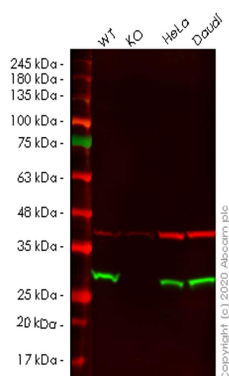
アプリケーション	Abreviews	特記事項
ICC/IF		1/100 - 1/250.
WB		1/1000 - 1/10000. Detects a band of approximately 25 kDa (predicted molecular weight: 25 kDa).
IP		1/50.
IHC-P		Use at an assay dependent concentration. Perform heat mediated antigen retrieval with citrate buffer pH 6 before commencing with IHC staining protocol.

**追加情報**      Is unsuitable for Flow Cyt.

#### ターゲット情報

機能	Significant glutathione conjugating activity is found only with the model substrate, 1-chloro-2,4-dinitrobenzene (CDNB).
組織特異性	Ubiquitous.
配列類似性	Belongs to the GST superfamily. Kappa family.
細胞内局在	Peroxisome.

#### 画像



Western blot - Anti-GSTK1 antibody [EP1938Y]  
(ab52759)

**All lanes :** Anti-GSTK1 antibody [EP1938Y] (ab52759) at 1/1000 dilution

**Lane 1 :** Wild-type HEK293T cell lysate

**Lane 2 :** GSTK1 knockout HEK293T cell lysate

**Lane 3 :** HeLa cell lysate

**Lane 4 :** Daudi cell lysate

Lysates/proteins at 20 µg per lane.

### Secondary

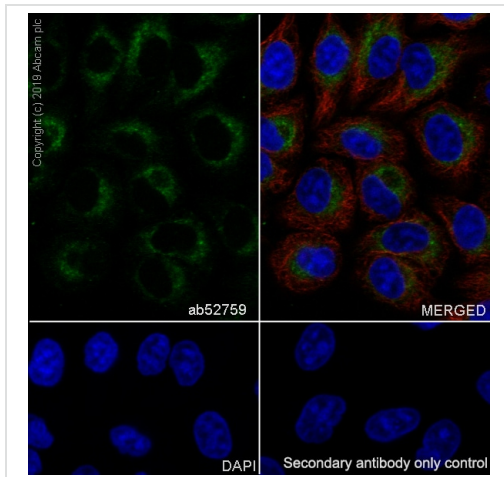
**All lanes :** Goat anti-Rabbit IgG H&L (IRDye® 800CW) preadsorbed ([ab216773](#)) at 1/10000 dilution

**Predicted band size:** 25 kDa

**Observed band size:** 27 kDa

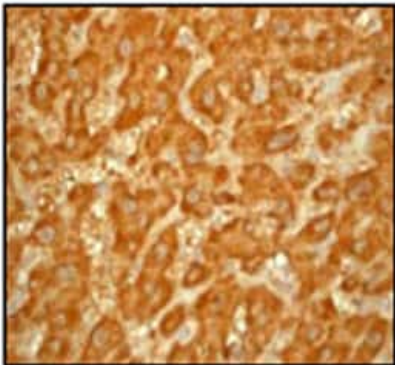
**Lanes 1-4:** Merged signal (red and green). Green - ab52759 observed at 27 kDa. Red - loading control [ab8245](#) observed at 36 kDa.

ab52759 Anti-GSTK1 antibody [EP1938Y] was shown to specifically react with GSTK1 in wild-type HEK293T cells. Loss of signal was observed when knockout cell line [ab266112](#) (knockout cell lysate [ab257461](#)) was used. Wild-type and GSTK1 knockout samples were subjected to SDS-PAGE. ab52759 and Anti-GAPDH antibody [6C5] - Loading Control ([ab8245](#)) were incubated at room temperature for 2.5 hours at 1 in 1000 dilution and 1 in 20000 dilution respectively. Blots were developed with Goat anti-Rabbit IgG H&L (IRDye® 800CW) preadsorbed ([ab216773](#)) and Goat anti-Mouse IgG H&L (IRDye® 680RD) preadsorbed ([ab216776](#)) secondary antibodies at 1 in 20000 dilution for 1 hour at room temperature before imaging.



Immunocytochemistry/ Immunofluorescence - Anti-GSTK1 antibody [EP1938Y] (ab52759)

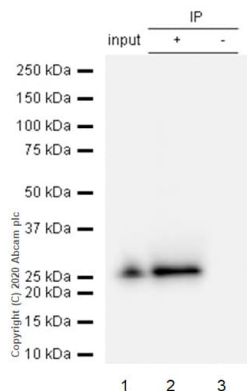
Immunocytochemistry analysis of A549 (human lung carcinoma epithelial cell) labeling GSTK1 with purified ab52759 at 1/100 dilution (10 µg/ml). Cells were fixed with 4% Paraformaldehyde and permeabilised with 0.1% tritonX-100. Goat anti rabbit IgG (Alexa Fluor® 488, [ab150077](#)) at 1/1000 (2 µg/ml) was used as the secondary antibody. [ab195889](#) Anti-alpha Tubulin antibody [DM1A] - Microtubule Marker (Alexa Fluor® 594) 1/200 (2.13 µg/ml) was used as counterstain. Nuclei were stained blue with DAPI. Negative control: PBS instead of the primary antibody.



Immunohistochemistry (Formalin/PFA-fixed paraffin-embedded sections) - Anti-GSTK1 antibody [EP1938Y] (ab52759)

Immunohistochemical staining of paraffin-embedded human liver using ab52759 at a 1:100 dilution.

Perform heat mediated antigen retrieval with citrate buffer pH 6 before commencing with IHC staining protocol.



Immunoprecipitation - Anti-GSTK1 antibody  
[EP1938Y] (ab52759)

Purified ab52759 at 1/50 dilution (2µg) immunoprecipitating GSTK1 in Human heart lysate.

Lane 1 (input): Human heart lysate 10µg

Lane 2 (+): ab52759 + Human heart lysate.

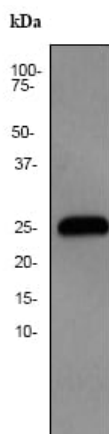
Lane 3 (-): Rabbit monoclonal IgG (**ab172730**) instead of ab52759 in Human heart lysate.

VeriBlot for IP Detection Reagent (HRP) (**ab131366**) (1/1000 dilution) was used for Western blotting.

Blocking Buffer and concentration: 5% NFDm/TBST.

Diluting buffer and concentration: 5% NFDm/TBST.

Observed band size: 25 kDa



Western blot - Anti-GSTK1 antibody [EP1938Y]  
(ab52759)

Anti-GSTK1 antibody [EP1938Y] (ab52759) at 1/5000 dilution + Fetal liver lysate at 10 µg





### Secondary

Goat anti-rabbit HRP labeled at 1/2000 dilution

**Predicted band size:** 25 kDa

**Observed band size:** 25 kDa

Why choose a recombinant antibody?

 <p><b>Research with confidence</b> Consistent and reproducible results</p>	 <p><b>Long-term and scalable supply</b> Recombinant technology</p>
 <p><b>Success from the first experiment</b> Confirmed specificity</p>	 <p><b>Ethical standards compliant</b> Animal-free production</p>

Anti-GSTK1 antibody [EP1938Y] (ab52759)

**Please note:** All products are "FOR RESEARCH USE ONLY. NOT FOR USE IN DIAGNOSTIC PROCEDURES"

### Our Abpromise to you: Quality guaranteed and expert technical support

- Replacement or refund for products not performing as stated on the datasheet
- Valid for 12 months from date of delivery
- Response to your inquiry within 24 hours
- We provide support in Chinese, English, French, German, Japanese and Spanish
- Extensive multi-media technical resources to help you
- We investigate all quality concerns to ensure our products perform to the highest standards

If the product does not perform as described on this datasheet, we will offer a refund or replacement. For full details of the Abpromise, please visit <https://www.abcam.co.jp/abpromise> or contact our technical team.

### Terms and conditions

- Guarantee only valid for products bought direct from Abcam or one of our authorized distributors