

Anti-GST3 / GST pi antibody ab53943

★★★★☆ **3 Abreviews** **17 References** 画像数 **2**

製品の概要

製品名	Anti-GST3 / GST pi antibody
製品の詳細	Goat polyclonal to GST3 / GST pi
由来種	Goat
特異性	ab53943 is specific for GST pi.
アプリケーション	適用あり: WB, IHC-P
種交差性	交差種: Human
免疫原	Full length native protein (purified) GST3/ GST pi (Rat)
特記事項	<p>The Life Science industry has been in the grips of a reproducibility crisis for a number of years. Abcam is leading the way in addressing this with our range of recombinant monoclonal antibodies and knockout edited cell lines for gold-standard validation. Please check that this product meets your needs before purchasing.</p> <p>If you have any questions, special requirements or concerns, please send us an inquiry and/or contact our Support team ahead of purchase. Recommended alternatives for this product can be found below, along with publications, customer reviews and Q&As</p>

製品の特性

製品の状態	Liquid
保存方法	Shipped at 4°C. Upon delivery aliquot and store at -20°C. Avoid freeze / thaw cycles.
バッファー	Preservative: 0.05% Sodium azide Constituents: PBS, 0.7% BSA
精製度	IgG fraction
特記事項(精製)	IgG fraction was prepared from the antisera using the caprylic acid precipitation method.
ポリ/モノ	ポリクローナル
アイソタイプ	IgG

アプリケーション

The Abpromise guarantee

Abpromise保証は、次のテスト済みアプリケーションにおけるab53943の使用に適用されます

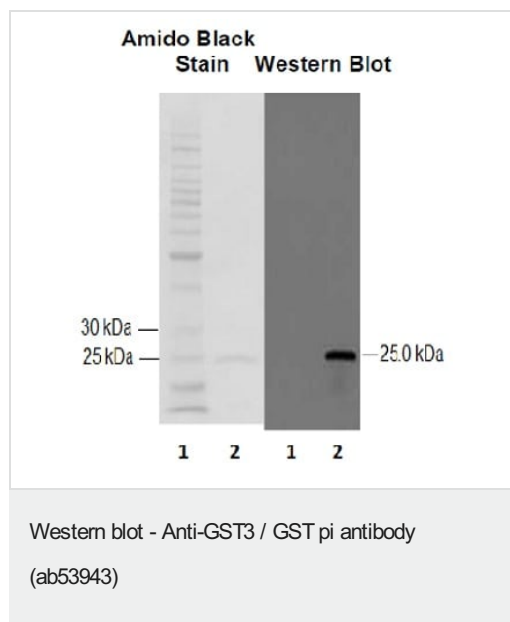
アプリケーションノートには、推奨の開始希釈率がありますが、適切な希釈率につきましてはご確認ください。

アプリケーション	Abreviews	特記事項
WB	★★★★★ (2)	1/3000. Detects a band of approximately 31 kDa (predicted molecular weight: 23 kDa).
IHC-P		1/200. Perform heat mediated antigen retrieval with citrate buffer pH 6 before commencing with IHC staining protocol.

ターゲット情報

機能	Conjugation of reduced glutathione to a wide number of exogenous and endogenous hydrophobic electrophiles.
配列類似性	Belongs to the GST superfamily. Pi family. Contains 1 GST C-terminal domain. Contains 1 GST N-terminal domain.

画像

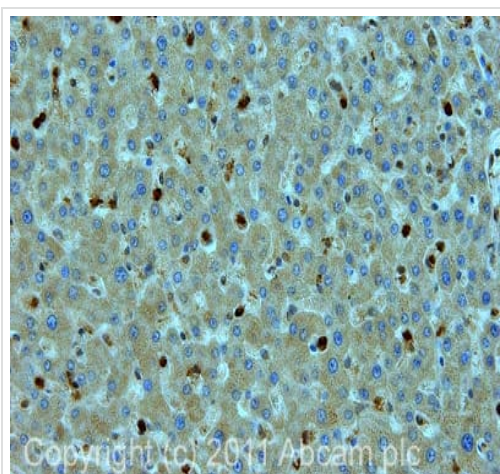


Amido Black stain and Western blot analysis of GST- π antibody.

Lane 1. Molecular weight marker.

Lane 2. Purified GST- π

A 1:2000 dilution is recommended for ECL method with overnight incubation at room temperature.



Immunohistochemistry (Formalin/PFA-fixed paraffin-embedded sections) - Anti-GST3 / GST pi antibody (ab53943)

IHC image of ab53943 staining in human normal liver formalin fixed paraffin embedded tissue section, performed on a Leica Bond™ system using the standard protocol B. The section was pre-treated using heat mediated antigen retrieval with sodium citrate buffer (pH6, epitope retrieval solution 1) for 20 mins. The section was then incubated with ab53943, 5µg/ml, for 15 mins at room temperature and detected using an HRP conjugated compact polymer system. DAB was used as the chromogen. The section was then counterstained with haematoxylin and mounted with DPX.

For other IHC staining systems (automated and non-automated) customers should optimize variable parameters such as antigen retrieval conditions, primary antibody concentration and antibody incubation times.

Please note: All products are "FOR RESEARCH USE ONLY. NOT FOR USE IN DIAGNOSTIC PROCEDURES"

Our Abpromise to you: Quality guaranteed and expert technical support

- Replacement or refund for products not performing as stated on the datasheet
- Valid for 12 months from date of delivery
- Response to your inquiry within 24 hours
- We provide support in Chinese, English, French, German, Japanese and Spanish
- Extensive multi-media technical resources to help you
- We investigate all quality concerns to ensure our products perform to the highest standards

If the product does not perform as described on this datasheet, we will offer a refund or replacement. For full details of the Abpromise, please visit <https://www.abcam.co.jp/abpromise> or contact our technical team.

Terms and conditions

- Guarantee only valid for products bought direct from Abcam or one of our authorized distributors