


Anti-GST3 / GST pi antibody ab117885

KO 評価済

★★★★★ 1 Abreviews 画像数 4

製品の概要

製品名	Anti-GST3 / GST pi antibody
製品の詳細	Rabbit polyclonal to GST3 / GST pi
由来種	Rabbit
アプリケーション	適用あり: IHC-P, ICC/IF, WB
種交差性	交差種: Human 交差が予測される動物種: Horse, Chimpanzee, Macaque monkey, Gorilla, Orangutan 
免疫原	Synthetic peptide. This information is proprietary to Abcam and/or its suppliers.
ポジティブ・コントロール	This antibody gave a positive signal in both Human Prostate and Kidney tissue lysates as well as the following whole cell lysates: PC3; HeLa; HEK293; Jurkat; K562. This antibody gave a positive result in IHC in the following FFPE tissue: Human normal prostate. This antibody gave a positive result when used in the following formaldehyde fixed cell lines: MCF-7
特記事項	<p>The Life Science industry has been in the grips of a reproducibility crisis for a number of years. Abcam is leading the way in addressing this with our range of recombinant monoclonal antibodies and knockout edited cell lines for gold-standard validation. Please check that this product meets your needs before purchasing.</p> <p>If you have any questions, special requirements or concerns, please send us an inquiry and/or contact our Support team ahead of purchase. Recommended alternatives for this product can be found below, along with publications, customer reviews and Q&As</p>

製品の特性

製品の状態	Liquid
保存方法	Shipped at 4°C. Store at +4°C short term (1-2 weeks). Upon delivery aliquot. Store at -20°C or -80°C. Avoid freeze / thaw cycle.
バッファー	pH: 7.40 Preservative: 0.02% Sodium azide Constituent: PBS
	Batches of this product that have a concentration < 1mg/ml may have BSA added as a stabilising agent. If you would like information about the formulation of a specific lot, please contact our

scientific support team who will be happy to help.

精製度

Immunogen affinity purified

ポリ/モノ

ポリクローナル

アイソタイプ

IgG

アプリケーション

The Abpromise guarantee

Abpromise保証は、次のテスト済みアプリケーションにおけるab117885の使用に適用されます

アプリケーションノートには、推奨の開始希釈率がありますが、適切な希釈率につきましてはご確認ください。

アプリケーション	Abreviews	特記事項
IHC-P		Use a concentration of 1 µg/ml.
ICC/IF	★★★★★ (1)	Use a concentration of 5 µg/ml.
WB		Use a concentration of 1 µg/ml. Detects a band of approximately 23 kDa (predicted molecular weight: 23 kDa).

ターゲット情報

機能

Conjugation of reduced glutathione to a wide number of exogenous and endogenous hydrophobic electrophiles.

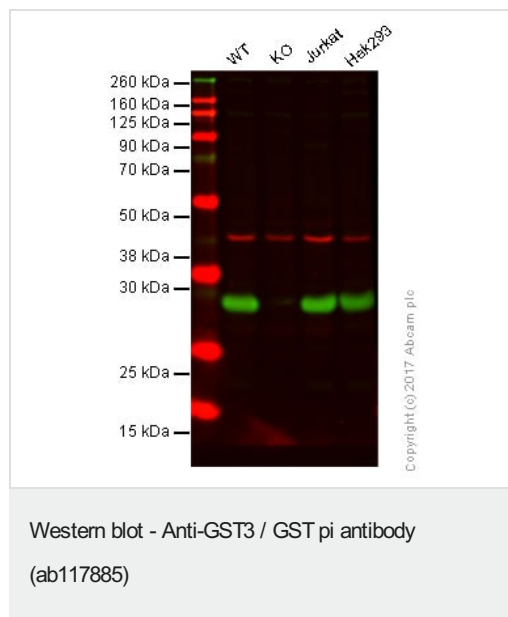
配列類似性

Belongs to the GST superfamily. Pi family.

Contains 1 GST C-terminal domain.

Contains 1 GST N-terminal domain.

画像



Lane 1: Wild-type HAP1 whole cell lysate (20 µg)

Lane 2: GST3 / GST pi knockout HAP1 whole cell lysate (20 µg)

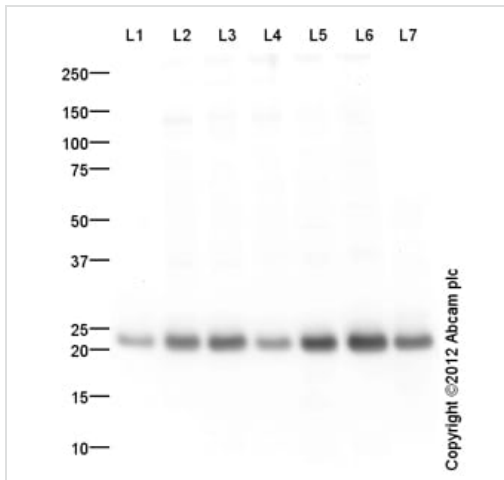
Lane 3: Jurkat whole cell lysate (20 µg)

Lane 4: Hek293 whole cell lysate (20 µg)

Lanes 1 - 4: Merged signal (red and green). Green - ab117885 observed at 23 kDa. Red - loading control, [ab9484](#), observed at 37 kDa.

ab117885 was shown to specifically react with GST3 / GST pi in wild-type HAP1 cells as signal was lost in GST3 / GST pi knockout cells. Wild-type and GST3 / GST pi knockout samples were subjected to SDS-PAGE. ab117885 and [ab9484](#) (Mouse anti-GAPDH loading control) were incubated overnight at 4°C at 1 µg/ml and 1/10,000 dilution respectively. Blots were developed with Goat anti-Rabbit IgG H&L (IRDye® 800CW) preabsorbed ([ab216773](#))

and Goat anti-Mouse IgG H&L (IRDye® 680RD) preabsorbed ([ab216776](#)) secondary antibodies at 1/10,000 dilution for 1 hour at room temperature before imaging.



Western blot - Anti-GST3 / GST pi antibody
(ab117885)

All lanes : Anti-GST3 / GST pi antibody (ab117885) at 1 µg/ml

Lane 1 : Human prostate tissue lysate (cirrhosis) - total protein
([ab30307](#))

Lane 2 : PC3 (Human prostate carcinoma cell line) Whole Cell
Lysate

Lane 3 : HeLa (Human epithelial carcinoma cell line) Whole Cell
Lysate

Lane 4 : HEK293 (Human embryonic kidney cell line) Whole Cell
Lysate

Lane 5 : Jurkat (Human T cell lymphoblast-like cell line) Whole Cell
Lysate

Lane 6 : K562 (Human erythromyeloblastoid leukemia cell line)
Whole Cell Lysate

Lane 7 : Human kidney tissue lysate - total protein ([ab30203](#))

Lysates/proteins at 10 µg per lane.

Secondary

All lanes : Goat Anti-Rabbit IgG H&L (HRP) preadsorbed
([ab97080](#)) at 1/5000 dilution

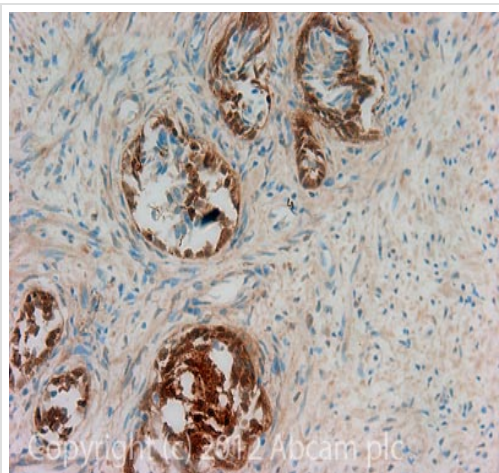
Developed using the ECL technique.

Performed under reducing conditions.

Predicted band size: 23 kDa

Observed band size: 23 kDa

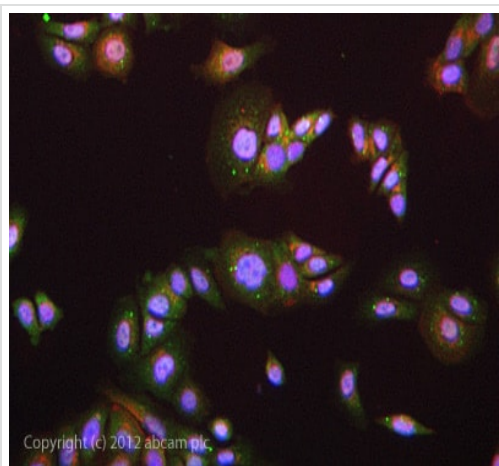
Exposure time: 30 seconds



Immunohistochemistry (Formalin/PFA-fixed paraffin-embedded sections) - Anti-GST3 / GST pi antibody (ab117885)

IHC image of GST3 / GST pi staining in Human normal prostate formalin fixed paraffin embedded tissue section, performed on a Leica Bond™ system using the standard protocol F. The section was pre-treated using heat mediated antigen retrieval with sodium citrate buffer (pH6, epitope retrieval solution 1) for 20 mins. The section was then incubated with ab117885, 1µg/ml, for 15 mins at room temperature and detected using an HRP conjugated compact polymer system. DAB was used as the chromogen. The section was then counterstained with haematoxylin and mounted with DPX.

For other IHC staining systems (automated and non-automated) customers should optimize variable parameters such as antigen retrieval conditions, primary antibody concentration and antibody incubation times.



Immunocytochemistry/ Immunofluorescence - Anti-GST3 / GST pi antibody (ab117885)

ab117885 stained MCF-7 cells. The cells were 4% formaldehyde fixed (10 min) and then incubated in 1%BSA / 10% normal goat serum / 0.3M glycine in 0.1% PBS-Tween for 1h to permeabilise the cells and block non-specific protein-protein interactions. The cells were then incubated with the antibody ab117885 at 5µg/ml overnight at +4°C. The secondary antibody (green) was DyLight® 488 goat anti- rabbit ([ab96899](#)) IgG (H+L) used at a 1/1000 dilution for 1h. Alexa Fluor® 594 WGA was used to label plasma membranes (red) at a 1/200 dilution for 1h. DAPI was used to stain the cell nuclei (blue) at a concentration of 1.43µM.

Please note: All products are "FOR RESEARCH USE ONLY. NOT FOR USE IN DIAGNOSTIC PROCEDURES"

Our Abpromise to you: Quality guaranteed and expert technical support

- Replacement or refund for products not performing as stated on the datasheet

- Valid for 12 months from date of delivery
- Response to your inquiry within 24 hours
- We provide support in Chinese, English, French, German, Japanese and Spanish
- Extensive multi-media technical resources to help you
- We investigate all quality concerns to ensure our products perform to the highest standards

If the product does not perform as described on this datasheet, we will offer a refund or replacement. For full details of the Abpromise, please visit <https://www.abcam.co.jp/abpromise> or contact our technical team.

Terms and conditions

- Guarantee only valid for products bought direct from Abcam or one of our authorized distributors