

Anti-GSK3 beta (phospho Y216) + GSK3 alpha (phospho Y279) antibody ab75745

★★★★★ [5 Abreviews](#) [153 References](#) [画像数 4](#)

製品の概要

製品名	Anti-GSK3 beta (phospho Y216) + GSK3 alpha (phospho Y279) antibody
製品の詳細	Rabbit polyclonal to GSK3 beta (phospho Y216) + GSK3 alpha (phospho Y279)
由来種	Rabbit
特異性	ab75745 detects endogenous levels of GSK3 beta only when phosphorylated at tyrosine 216 and GSK3 alpha when phosphorylated at tyrosine 276. This antibody can also cross-react with GSK3 alpha subunit due to the consistent antigen-sequence of "GEPNVSICSRYY".
アプリケーション	適用あり: ICC/IF, WB, IHC-P
種交差性	交差種: Mouse, Rat, Human
免疫原	This product was produced with the following immunogens: Synthetic peptide corresponding to Human GSK3 beta (phospho Y216). Synthetic peptide corresponding to Human GSK3 alpha (phospho Y279). Database link: P49840

 [Run BLAST with](#)

 [Run BLAST with](#)

特記事項

The Life Science industry has been in the grips of a reproducibility crisis for a number of years. Abcam is leading the way in addressing this with our range of recombinant monoclonal antibodies and knockout edited cell lines for gold-standard validation. Please check that this product meets your needs before purchasing.

If you have any questions, special requirements or concerns, please send us an inquiry and/or contact our Support team ahead of purchase. Recommended alternatives for this product can be found below, along with publications, customer reviews and Q&As

製品の特性

製品の状態	Liquid
保存方法	Shipped at 4°C. Upon delivery aliquot and store at -20°C. Avoid freeze / thaw cycles.
バッファー	pH: 7.40 Preservative: 0.02% Sodium azide Constituents: 0.87% Sodium chloride, 50% Glycerol, PBS

Without Mg²⁺ and Ca²⁺

精製度	Immunogen affinity purified
特記事項 (精製)	ab75745 was affinity purified from rabbit antiserum by affinity chromatography using epitope specific phosphopeptide. The antibody against non phosphopeptide was removed by chromatography using non phosphopeptide corresponding to the phosphorylation site.
ポリ/モノ	ポリクローナル
アイソタイプ	IgG

アプリケーション

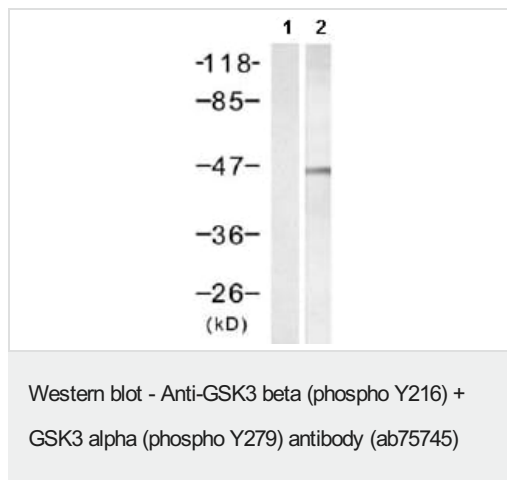
The Abpromise guarantee **Abpromise保証は、次のテスト済みアプリケーションにおけるab75745の使用に適用されます**
アプリケーションノートには、推奨の開始希釈率がありますが、適切な希釈率につきましてはご検討ください。

アプリケーション	Abreviews	特記事項
ICC/IF		1/100 - 1/200.
WB	★★★★★ (4)	1/500 - 1/1000. Predicted molecular weight: 47 kDa. This antibody can be used with studies using ab110532 .
IHC-P		1/50 - 1/100.

ターゲット情報

細胞内局在 GSK3 beta: Cytoplasm. Nucleus. Cell membrane. The phosphorylated form shows localization to cytoplasm and cell membrane. The MEMO1-RHOA-DIAPH1 signaling pathway controls localization of the phosphorylated form to the cell membrane.

画像



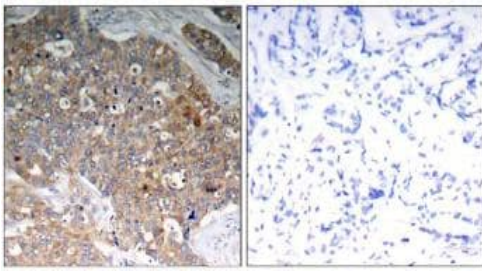
All lanes : Anti-GSK3 beta (phospho Y216) + GSK3 alpha (phospho Y279) antibody (ab75745) at 1/500 dilution

Lane 1 : 293 cell extracts, untreated

Lane 2 : 293 cell extracts, treated with insulin (40μM, 30min)

Predicted band size: 47 kDa

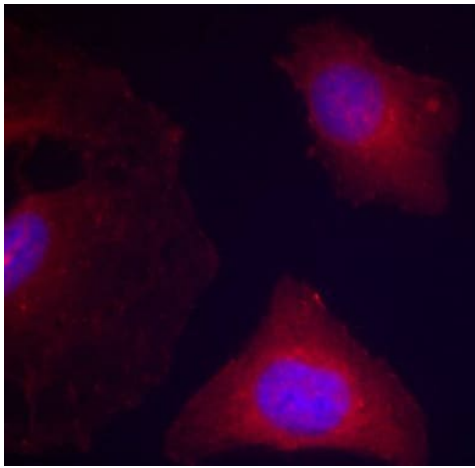
Observed band size: 47 kDa



P-Peptide - +

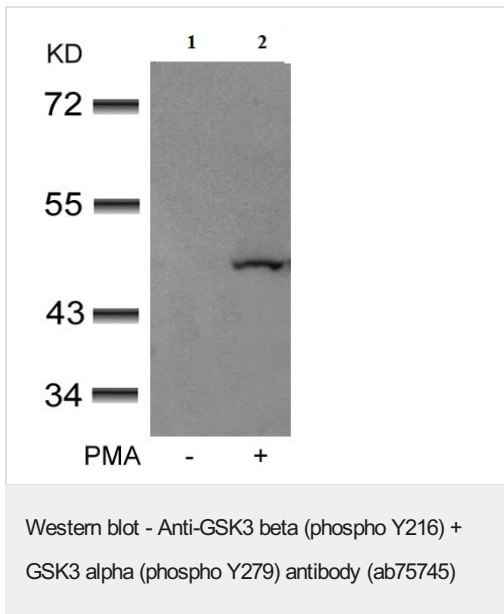
Immunohistochemistry (Formalin/PFA-fixed paraffin-embedded sections) - Anti-GSK3 beta (phospho Y216) + GSK3 alpha (phospho Y279) antibody (ab75745)

ab75745, at a 1/50 dilution, staining GSK3 alpha/beta in paraffin embedded human breast carcinoma tissue by Immunohistochemistry, in the absence (left image) or presence (right image) of the immunizing phospho peptide.



Immunocytochemistry/ Immunofluorescence - Anti-GSK3 beta (phospho Y216) + GSK3 alpha (phospho Y279) antibody (ab75745)

ab75745 at 1/100 dilution staining GSK3 alpha/beta in human HeLa cells by ICC/IF.



All lanes : Anti-GSK3 beta (phospho Y216) + GSK3 alpha (phospho Y279) antibody (ab75745) at 1/500 dilution

Lane 1 : 293 cells untreated PMA

Lane 2 : 293 cells treated PMA

Predicted band size: 47 kDa

Please note: All products are "FOR RESEARCH USE ONLY. NOT FOR USE IN DIAGNOSTIC PROCEDURES"

Our Abpromise to you: Quality guaranteed and expert technical support

- Replacement or refund for products not performing as stated on the datasheet
- Valid for 12 months from date of delivery
- Response to your inquiry within 24 hours
- We provide support in Chinese, English, French, German, Japanese and Spanish
- Extensive multi-media technical resources to help you
- We investigate all quality concerns to ensure our products perform to the highest standards

If the product does not perform as described on this datasheet, we will offer a refund or replacement. For full details of the Abpromise, please visit <https://www.abcam.co.jp/abpromise> or contact our technical team.

Terms and conditions

- Guarantee only valid for products bought direct from Abcam or one of our authorized distributors