

Anti-GSK3 beta antibody [3D10] ab93926

★★★★★ [8 Abreviews](#) [132 References](#) [画像数 4](#)

製品の概要

製品名	Anti-GSK3 beta antibody [3D10]
製品の詳細	Mouse monoclonal [3D10] to GSK3 beta
由来種	Mouse
アプリケーション	適用あり: ICC/IF, Flow Cyt, WB, IHC-P
種交差性	交差種: Mouse, Rat, Human
免疫原	Purified recombinant C-terminal fragment of Human GSK3 beta expressed in <i>E. coli</i> .
ポジティブ・コントロール	WB: A549, K562, PC-12, NIH/3T3, and HEK293 cell lysates IHC-P: Lung cancer and breast cancer tissues ICC/IF: NIH/3T3 and U251 cells
特記事項	<p>The Life Science industry has been in the grips of a reproducibility crisis for a number of years. Abcam is leading the way in addressing this with our range of recombinant monoclonal antibodies and knockout edited cell lines for gold-standard validation. Please check that this product meets your needs before purchasing.</p> <p>If you have any questions, special requirements or concerns, please send us an inquiry and/or contact our Support team ahead of purchase. Recommended alternatives for this product can be found below, along with publications, customer reviews and Q&As</p>

製品の特性

製品の状態	Liquid
保存方法	Shipped at 4°C. Store at -20°C.
バッファー	Preservative: 0.05% Sodium azide Constituent: PBS
精製度	Protein G purified
特記事項 (精製)	Purified from tissue culture supernatant.
ポリ/モノ	モノクローナル
クローン名	3D10
アイソタイプ	IgG2a

アプリケーション

The Abpromise guarantee

Abpromise保証は、次のテスト済みアプリケーションにおけるab93926の使用に適用されます

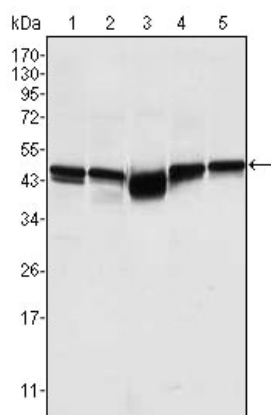
アプリケーションノートには、推奨の開始希釈率がありますが、適切な希釈率につきましてはご検討ください。

アプリケーション	Abreviews	特記事項
ICC/IF	★★★★★ (3)	1/200 - 1/1000.
Flow Cyt		Use 0.5µg for 10 ⁶ cells. ab170191 - Mouse monoclonal IgG2a, is suitable for use as an isotype control with this antibody.
WB	★★★★★ (5)	1/500 - 1/2000. Predicted molecular weight: 47 kDa.
IHC-P		1/4000 - 1/10000.

ターゲット情報

機能	Participates in the Wnt signaling pathway. Implicated in the hormonal control of several regulatory proteins including glycogen synthase, MYB and the transcription factor JUN. Phosphorylates JUN at sites proximal to its DNA-binding domain, thereby reducing its affinity for DNA. Phosphorylates MUC1 in breast cancer cells, and decreases the interaction of MUC1 with CTNNB1/beta-catenin. Phosphorylates CTNNB1/beta-catenin. Phosphorylates SNAI1. Plays an important role in ERBB2-dependent stabilization of microtubules at the cell cortex. Prevents the phosphorylation of APC and CLASP2, allowing its association with the cell membrane. In turn, membrane-bound APC allows the localization of MACF1 to the cell membrane, which is required for microtubule capture and stabilization. Phosphorylates MACF1 and this phosphorylation inhibits the binding of MACF1 to microtubules which is critical for its role in bulge stem cell migration and skin wound repair.
組織特異性	Expressed in testis, thymus, prostate and ovary and weakly expressed in lung, brain and kidney.
配列類似性	Belongs to the protein kinase superfamily. CMGC Ser/Thr protein kinase family. GSK-3 subfamily. Contains 1 protein kinase domain.
翻訳後修飾	Phosphorylated by AKT1 and ILK1. Activated by phosphorylation at Tyr-216.
細胞内局在	Cytoplasm. Nucleus. Cell membrane. The phosphorylated form shows localization to cytoplasm and cell membrane. The MEMO1-RHOA-DIAPH1 signaling pathway controls localization of the phosphorylated form to the cell membrane.

画像



Western blot - Anti-GSK3 beta antibody [3D10]
(ab93926)

All lanes : Anti-GSK3 beta antibody [3D10] (ab93926) at 1/500 dilution

Lane 1 : A549 cell lysate

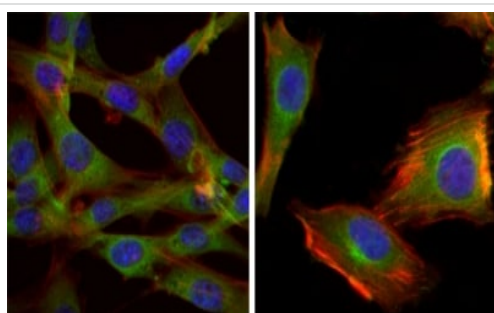
Lane 2 : K562 cell lysate

Lane 3 : PC-12 cell lysate

Lane 4 : NIH/3T3 cell lysate

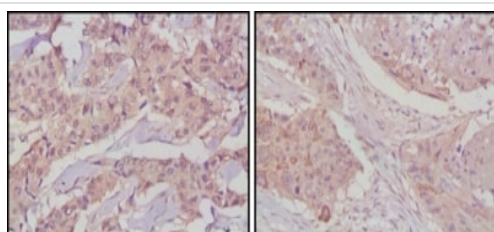
Lane 5 : HEK293 cell lysate

Predicted band size: 47 kDa



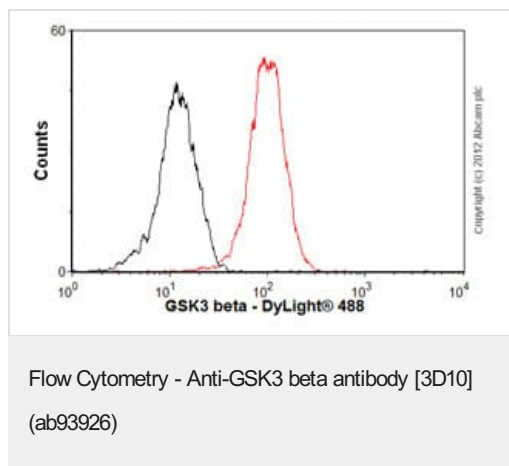
Immunocytochemistry/ Immunofluorescence - Anti-GSK3 beta antibody [3D10] (ab93926)

ab93926, at a 1/4000 dilution, staining GSK3 beta in NIH/3T3 cells (left) and U251 cells (right) by Immunofluorescence (green). DRAQ5 fluorescent DNA dye is blue and Actin filaments have been labeled with Alexa Fluor-555 phalloidin (red).



Immunohistochemistry (Formalin/PFA-fixed paraffin-embedded sections) - Anti-GSK3 beta antibody [3D10] (ab93926)

ab93926, at a 1/4000 dilution, staining GSK3 beta in paraffin embedded Human lung cancer (left) and breast cancer (right) tissues by Immunohistochemistry. Detection: DAB staining.



Overlay histogram showing HeLa cells stained with ab93926 (red line). The cells were fixed with 80% methanol (5 min) and then permeabilized with 0.1% PBS-Tween for 20 min. The cells were then incubated in 1x PBS / 10% normal goat serum / 0.3M glycine to block non-specific protein-protein interactions followed by the antibody (ab93926, 0.5µg/1x10⁶ cells) for 30 min at 22°C. The secondary antibody used was DyLight® 488 goat anti-mouse IgG (H+L) (**ab96879**) at 1/500 dilution for 30 min at 22°C. Isotype control antibody (black line) was mouse IgG2a [ICIGG2A] (**ab91361**, 1µg/1x10⁶ cells) used under the same conditions. Acquisition of >5,000 events was performed.

Please note: All products are "FOR RESEARCH USE ONLY. NOT FOR USE IN DIAGNOSTIC PROCEDURES"

Our Abpromise to you: Quality guaranteed and expert technical support

- Replacement or refund for products not performing as stated on the datasheet
- Valid for 12 months from date of delivery
- Response to your inquiry within 24 hours
- We provide support in Chinese, English, French, German, Japanese and Spanish
- Extensive multi-media technical resources to help you
- We investigate all quality concerns to ensure our products perform to the highest standards

If the product does not perform as described on this datasheet, we will offer a refund or replacement. For full details of the Abpromise, please visit <https://www.abcam.co.jp/abpromise> or contact our technical team.

Terms and conditions

- Guarantee only valid for products bought direct from Abcam or one of our authorized distributors