


Anti-GSK3 alpha (phospho S21) antibody ab28808

5 References [画像数 3](#)

製品の概要

製品名	Anti-GSK3 alpha (phospho S21) antibody
製品の詳細	Rabbit polyclonal to GSK3 alpha (phospho S21)
由来種	Rabbit
アプリケーション	適用あり: ICC/IF, WB, IHC-P
種交差性	交差種: Human 交差が予測される動物種: Rat 
免疫原	Synthetic peptide corresponding to GSK3 alpha (phospho S21).
特記事項	<p>The Life Science industry has been in the grips of a reproducibility crisis for a number of years. Abcam is leading the way in addressing this with our range of recombinant monoclonal antibodies and knockout edited cell lines for gold-standard validation. Please check that this product meets your needs before purchasing.</p> <p>If you have any questions, special requirements or concerns, please send us an inquiry and/or contact our Support team ahead of purchase. Recommended alternatives for this product can be found below, along with publications, customer reviews and Q&As</p>

製品の特性

製品の状態	Liquid
保存方法	Shipped at 4°C. Upon delivery aliquot and store at -20°C. Avoid freeze / thaw cycles.
バッファー	pH: 7.40 Preservative: 0.02% Sodium azide Constituents: PBS, 50% Glycerol (glycerin, glycerine), 0.87% Sodium chloride
精製度	Immunogen affinity purified
ポリ/モノ	ポリクローナル
アイソタイプ	IgG

アプリケーション

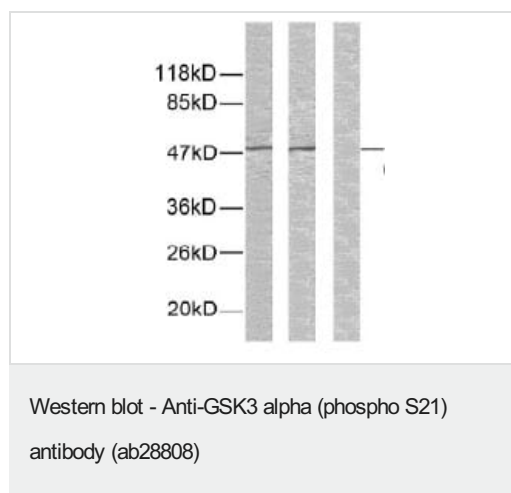
The Abpromise guarantee Abpromise保証は、次のテスト済みアプリケーションにおけるab28808の使用に適用されます
アプリケーションノートには、推奨の開始希釈率がありますが、適切な希釈率につきましてはご検討ください。

アプリケーション	Abreviews	特記事項
ICC/IF		Use a concentration of 1 - 5 µg/ml.
WB		1/500 - 1/1000. Predicted molecular weight: 50 kDa.
IHC-P		Use at an assay dependent concentration.

ターゲット情報

機能	Implicated in the hormonal control of several regulatory proteins including glycogen synthase, MYB and the transcription factor JUN.
配列類似性	Belongs to the protein kinase superfamily. CMGC Ser/Thr protein kinase family. GSK-3 subfamily. Contains 1 protein kinase domain.

画像



All lanes : Anti-GSK3 alpha (phospho S21) antibody (ab28808) at 1/1000 dilution

Lane 1 : Extracts from ovary cancer cells.

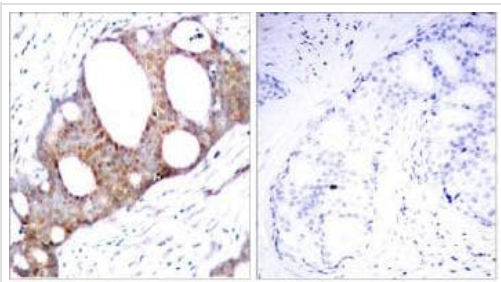
Lane 2 : Extracts from ovary cancer cells. with synthesised non phosphopeptide at 1 µg/ml

Lane 3 : Extracts from ovary cancer cells. with synthesised phosphopeptide at 1 µg/ml

Lysates/proteins at 30 µg per lane.

Predicted band size: 50 kDa

Observed band size: 50 kDa



Immunohistochemistry (Formalin/PFA-fixed paraffin-embedded sections) - Anti-GSK3 alpha (phospho S21) antibody (ab28808)

Immunohistochemical analysis of paraffin embedded breast carcinoma, using primary CDK2 (Phospho-Thr160) ab28808 at 1:100 dilution and Alkaline Phosphatase AffiniPure Goat Anti-Rabbit IgG (H+L) secondary antibody. Left: Untreated; Right: Treated with synthesized phosphopeptide.

Immunocytochemistry/ Immunofluorescence - Anti-GSK3 alpha (phospho S21) antibody (ab28808)

ICC/IF image of ab28808 stained HeLa cells. The cells were 4% PFA fixed (10 min) and then incubated in 1%BSA / 10% normal goat serum / 0.3M glycine in 0.1% PBS-Tween for 1h to permeabilise the cells and block non-specific protein-protein interactions. The cells were then incubated with the antibody (ab28808, 1µg/ml) overnight at +4°C. The secondary antibody (green) was Alexa Fluor® 488 goat anti-rabbit IgG (H+L) used at a 1/1000 dilution for 1h. Alexa Fluor® 594 WGA was used to label plasma membranes (red) at a 1/200 dilution for 1h. DAPI was used to stain the cell nuclei (blue) at a concentration of 1.43µM.

Please note: All products are "FOR RESEARCH USE ONLY. NOT FOR USE IN DIAGNOSTIC PROCEDURES"

Our Abpromise to you: Quality guaranteed and expert technical support

- Replacement or refund for products not performing as stated on the datasheet
- Valid for 12 months from date of delivery
- Response to your inquiry within 24 hours
- We provide support in Chinese, English, French, German, Japanese and Spanish
- Extensive multi-media technical resources to help you
- We investigate all quality concerns to ensure our products perform to the highest standards

If the product does not perform as described on this datasheet, we will offer a refund or replacement. For full details of the Abpromise, please visit <https://www.abcam.co.jp/abpromise> or contact our technical team.

Terms and conditions

- Guarantee only valid for products bought direct from Abcam or one of our authorized distributors