

Anti-GSC antibody [EPR4847] ab109024

リコンビナント RabMAb

★★★★☆ [2 Abreviews](#) [1 References](#) [画像数 2](#)

製品の概要

製品名	Anti-GSC antibody [EPR4847]
製品の詳細	Rabbit monoclonal [EPR4847] to GSC
由来種	Rabbit
特異性	Negative WB result with mouse brain, heart, kidney and spleen tissue lysates, but there is a feedback this antibody detected mouse GSC with NMuMG (mouse mammary gland, normal epithelial) cell lysate. Other samples has not been tested.
アプリケーション	適用あり: WB 適用なし: Flow Cyt, ICC/IF or IHC-P
種交差性	交差種: Human
免疫原	Synthetic peptide. This information is proprietary to Abcam and/or its suppliers.
ポジティブ・コントロール	Human brain, HT29, MCF7, and HepG2 lysates.
特記事項	<p>This product is a recombinant monoclonal antibody, which offers several advantages including:</p> <ul style="list-style-type: none">- High batch-to-batch consistency and reproducibility- Improved sensitivity and specificity- Long-term security of supply- Animal-free production <p>For more information see here.</p> <p>Our RabMAb[®] technology is a patented hybridoma-based technology for making rabbit monoclonal antibodies. For details on our patents, please refer to RabMAb[®] patents.</p> <p>Rat: We have preliminary internal testing data to indicate this antibody may not react with this species. Please contact us for more information.</p>

製品の特性

製品の状態	Liquid
保存方法	Shipped at 4°C. Store at -20°C. Stable for 12 months at -20°C.
バッファー	pH: 7.20 Preservative: 0.05% Sodium azide Constituents: 0.1% BSA, 40% Glycerol (glycerin, glycerine), 9.85% Tris glycine, 50% Tissue culture supernatant

精製度	Protein A purified
ポリ/モノ	モノクローナル
クローン名	EPR4847
アイソタイプ	IgG

アプリケーション

The Abpromise guarantee **Abpromise保証は、次のテスト済みアプリケーションにおけるab109024の使用に適用されず**
 アプリケーションノートには、推奨の開始希釈率がありますが、適切な希釈率につきましてはご検討ください。

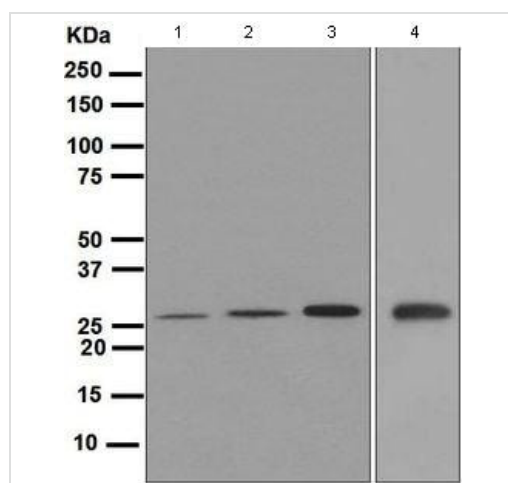
アプリケーション	Abreviews	特記事項
WB	★★★★★ (1)	1/1000 - 1/10000. Detects a band of approximately 28 kDa (predicted molecular weight: 28 kDa).

追加情報 Is unsuitable for Flow Cyt, ICC/IF or IHC-P.

ターゲット情報

機能	Regulates chordin (CHRD). May play a role in spatial programming within discrete embryonic fields or lineage compartments during organogenesis. In concert with NKX3-2, plays a role in defining the structural components of the middle ear; required for the development of the entire tympanic ring.
配列類似性	Belongs to the paired homeobox family. Bicoid subfamily. Contains 1 homeobox DNA-binding domain.
細胞内局在	Nucleus.

画像



All lanes : Anti-GSC antibody [EPR4847] (ab109024) at 1/1000 dilution

Lane 1 : Human brain lysate

Lane 2 : HT29 lysate

Lane 3 : MCF7 lysate

Lane 4 : HepG2 lysate

Lysates/proteins at 10 µg per lane.

Predicted band size: 28 kDa

Western blot - Anti-GSC antibody [EPR4847]
(ab109024)

Why choose a recombinant antibody?



Research with confidence
Consistent and reproducible results



Long-term and scalable supply
Recombinant technology



Success from the first experiment
Confirmed specificity



Ethical standards compliant
Animal-free production

Anti-GSC antibody [EPR4847] (ab109024)

Please note: All products are "FOR RESEARCH USE ONLY. NOT FOR USE IN DIAGNOSTIC PROCEDURES"

Our Abpromise to you: Quality guaranteed and expert technical support

- Replacement or refund for products not performing as stated on the datasheet
- Valid for 12 months from date of delivery
- Response to your inquiry within 24 hours
- We provide support in Chinese, English, French, German, Japanese and Spanish
- Extensive multi-media technical resources to help you
- We investigate all quality concerns to ensure our products perform to the highest standards

If the product does not perform as described on this datasheet, we will offer a refund or replacement. For full details of the Abpromise, please visit <https://www.abcam.co.jp/abpromise> or contact our technical team.

Terms and conditions

- Guarantee only valid for products bought direct from Abcam or one of our authorized distributors