


Anti-GRP78 BiP antibody ab32618

[50 References](#) [画像数 4](#)

製品の概要

製品名	Anti-GRP78 BiP antibody
製品の詳細	Rabbit polyclonal to GRP78 BiP
由来種	Rabbit
アプリケーション	適用あり: WB, IHC-P, ICC/IF
種交差性	交差種: Mouse, Human, Chinese hamster 交差が予測される動物種: Rat, Chicken, Hamster, Xenopus laevis 
免疫原	Synthetic peptide within Human GRP78 BiP aa 1-100. The exact sequence is proprietary. Database link: P11021
ポジティブ・コントロール	HeLa cells, breast carcinoma.
特記事項	<p>This product is FOR RESEARCH USE ONLY. For commercial use, please contact partnerships@abcam.com.</p> <p>The Life Science industry has been in the grips of a reproducibility crisis for a number of years. Abcam is leading the way in addressing this with our range of recombinant monoclonal antibodies and knockout edited cell lines for gold-standard validation. Please check that this product meets your needs before purchasing.</p> <p>If you have any questions, special requirements or concerns, please send us an inquiry and/or contact our Support team ahead of purchase. Recommended alternatives for this product can be found below, along with publications, customer reviews and Q&As</p>

製品の特性

製品の状態	Liquid
保存方法	Shipped at 4°C. Upon delivery aliquot and store at -20°C. Avoid freeze / thaw cycles.
バッファー	pH: 7.60 Preservative: 0.1% Sodium azide Constituents: PBS, 1% BSA
精製度	Immunogen affinity purified
ポリ/モノ	ポリクローナル
アイソタイプ	IgG

アプリケーション

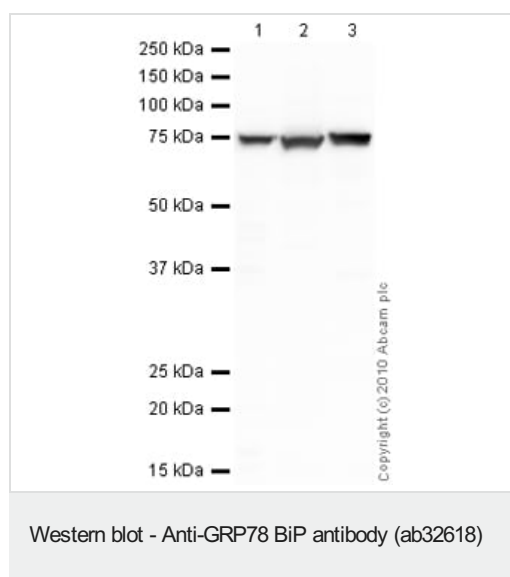
The Abpromise guarantee Abpromise保証は、次のテスト済みアプリケーションにおけるab32618の使用に適用されます
アプリケーションノートには、推奨の開始希釈率がありますが、適切な希釈率につきましてはご確認ください。

アプリケーション	Abreviews	特記事項
WB		Use at an assay dependent concentration. Detects a band of approximately 75 kDa (predicted molecular weight: 78 kDa).
IHC-P		1/100. Perform heat mediated antigen retrieval before commencing with IHC staining protocol.
ICC/IF		1/100.

ターゲット情報

機能	Probably plays a role in facilitating the assembly of multimeric protein complexes inside the endoplasmic reticulum. Involved in the correct folding of proteins and degradation of misfolded proteins via its interaction with DNAJC10, probably to facilitate the release of DNAJC10 from its substrate.
関連疾患	Autoantigen in rheumatoid arthritis.
配列類似性	Belongs to the heat shock protein 70 family.
細胞内局在	Endoplasmic reticulum lumen. Melanosome. Cytoplasm. Identified by mass spectrometry in melanosome fractions from stage I to stage IV.

画像



All lanes : Anti-GRP78 BiP antibody (ab32618) at 1 µg/ml

Lane 1 : Liver (Mouse) Tissue Lysate

Lane 2 : CHO-K1 cell lysate Whole Cell Lysate

Lane 3 : HeLa (Human epithelial carcinoma cell line) Whole Cell Lysate

Lysates/proteins at 10 µg per lane.

Secondary

All lanes : Goat Anti-Rabbit IgG H&L (HRP) preadsorbed ([ab97080](#)) at 1/5000 dilution

Developed using the ECL technique.

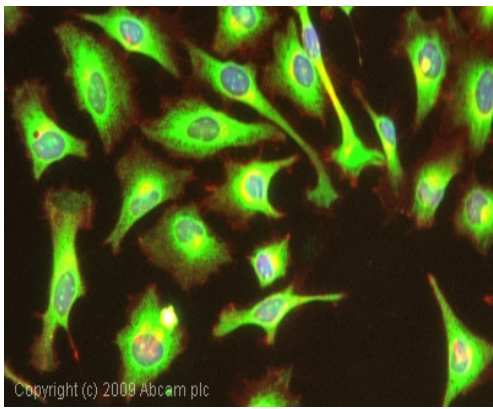
Performed under reducing conditions.

Predicted band size: 78 kDa

Observed band size: 75 kDa

Exposure time: 30 seconds

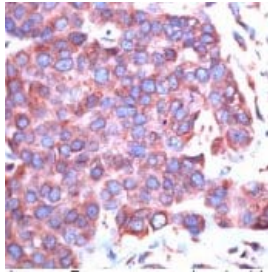
The band observed at 75 kDa could potentially be a cleaved form of GRP78 BiP due to the presence of a 18 amino acid signal peptide.



Copyright (c) 2009 Abcam plc

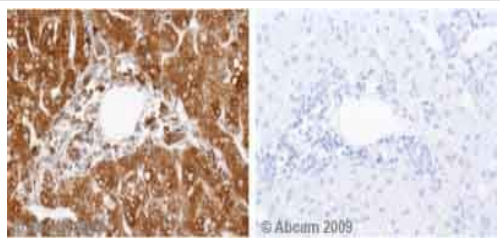
Immunocytochemistry/ Immunofluorescence - Anti-GRP78 BiP antibody (ab32618)

ICC/IF image of ab32618 stained HeLa cells. The cells were 100% methanol fixed (5 min) and then incubated in 1%BSA / 10% normal goat serum / 0.3M glycine in 0.1% PBS-Tween for 1h to permeabilise the cells and block non-specific protein-protein interactions. The cells were then incubated with the antibody (ab32618, 1µg/ml) overnight at +4°C. The secondary antibody (green) was Alexa Fluor® 488 goat anti-rabbit IgG (H+L) used at a 1/1000 dilution for 1h. Alexa Fluor® 594 WGA was used to label plasma membranes (red) at a 1/200 dilution for 1h. DAPI was used to stain the cell nuclei (blue) at a concentration of 1.43µM.



Immunohistochemistry (Formalin/PFA-fixed paraffin-embedded sections) - Anti-GRP78 BiP antibody (ab32618)

This image shows human breast carcinoma stained with ab32618 diluted 1/100.



Immunohistochemistry (Formalin/PFA-fixed paraffin-embedded sections) - Anti-GRP78 BiP antibody (ab32618)

Ab32618 staining Human normal liver parenchyma. Staining is localised to endoplasmic reticulum compartment.

Left panel: with primary antibody at 2 ug/ml. Right panel: isotype control.

Sections were stained using an automated system DAKO Autostainer Plus , at room temperature: sections were rehydrated and antigen retrieved with the Dako 3 in 1 AR buffers citrate pH6.0 in a DAKO PT Link. Slides were peroxidase blocked in 3% H₂O₂ in methanol for 10 mins. They were then blocked with Dako Protein block for 10 minutes (containing casein 0.25% in PBS) then incubated with primary antibody for 20 min and detected with Dako envision flex amplification kit for 30 minutes. Colorimetric detection was completed with Diaminobenzidine for 5 minutes. Slides were counterstained with Haematoxylin and coverslipped under DePeX. Please note that for manual staining we recommend to optimize the primary antibody concentration and incubation time (overnight incubation), and amplification may be requi

Please note: All products are "FOR RESEARCH USE ONLY. NOT FOR USE IN DIAGNOSTIC PROCEDURES"

Our Abpromise to you: Quality guaranteed and expert technical support

- Replacement or refund for products not performing as stated on the datasheet
- Valid for 12 months from date of delivery
- Response to your inquiry within 24 hours
- We provide support in Chinese, English, French, German, Japanese and Spanish
- Extensive multi-media technical resources to help you
- We investigate all quality concerns to ensure our products perform to the highest standards

If the product does not perform as described on this datasheet, we will offer a refund or replacement. For full details of the Abpromise, please visit <https://www.abcam.co.jp/abpromise> or contact our technical team.

Terms and conditions

- Guarantee only valid for products bought direct from Abcam or one of our authorized distributors