

Anti-Grp75/MOT antibody ab53098

★★★★★ **2 Abreviews** **21 References** 画像数 **4**

製品の概要

製品名	Anti-Grp75/MOT antibody
製品の詳細	Rabbit polyclonal to Grp75/MOT
由来種	Rabbit
特異性	Detects endogenous levels of total Grp75 / MOT protein
アプリケーション	適用あり: ELISA, WB, IHC-P, ICC/IF
種交差性	交差種: Mouse, Rat, Human, African green monkey
免疫原	Synthetic peptide corresponding to Human Grp75/MOT aa 630-679. Database link: P38646
特記事項	<p>The Life Science industry has been in the grips of a reproducibility crisis for a number of years. Abcam is leading the way in addressing this with our range of recombinant monoclonal antibodies and knockout edited cell lines for gold-standard validation. Please check that this product meets your needs before purchasing.</p> <p>If you have any questions, special requirements or concerns, please send us an inquiry and/or contact our Support team ahead of purchase. Recommended alternatives for this product can be found below, along with publications, customer reviews and Q&As</p>

製品の特性

製品の状態	Liquid
保存方法	Shipped at 4°C. Store at -20°C. Stable for 12 months at -20°C.
バッファー	<p>pH: 7.40</p> <p>Preservative: 0.02% Sodium azide</p> <p>Constituents: 50% Glycerol, 0.87% Sodium chloride, PBS</p>
精製度	Without Mg+2 and Ca+2
特記事項 (精製)	Immunogen affinity purified
ポリ/モノ	Affinity purified from rabbit antiserum by affinity chromatography using epitope specific immunogen.
アイソタイプ	ポリクローナル
	IgG

アプリケーション

The Abpromise guarantee

Abpromise保証は、次のテスト済みアプリケーションにおけるab53098の使用に適用されます

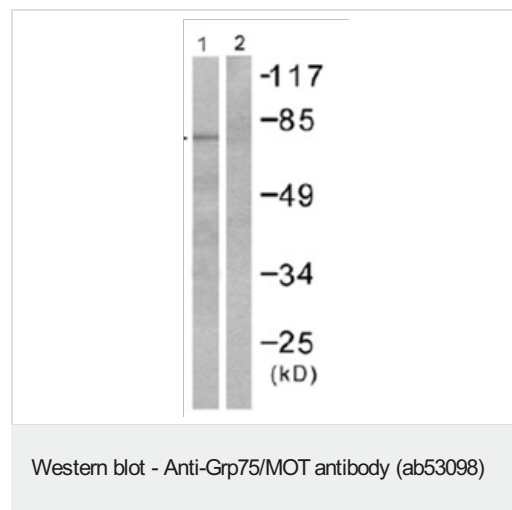
アプリケーションノートには、推奨の開始希釈率がありますが、適切な希釈率につきましてはご検討ください。

アプリケーション	Abreviews	特記事項
ELISA		Use at an assay dependent concentration.
WB	★★★★★ (1)	1/300 - 1/1000. Detects a band of approximately 74 kDa (predicted molecular weight: 74 kDa).
IHC-P	★★★★★ (1)	Use at an assay dependent concentration.
ICC/IF		Use a concentration of 1 µg/ml.

ターゲット情報

機能	Implicated in the control of cell proliferation and cellular aging. May also act as a chaperone.
配列類似性	Belongs to the heat shock protein 70 family.
翻訳後修飾	Phosphorylated upon DNA damage, probably by ATM or ATR.
細胞内局在	Mitochondrion.

画像



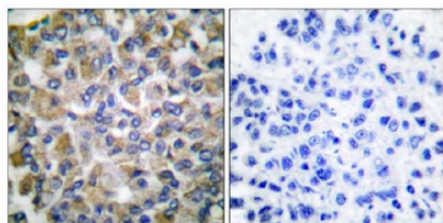
All lanes : Anti-Grp75/MOT antibody (ab53098) at 1/300 dilution

Lane 1 : COS-7 (African green monkey kidney fibroblast-like cell line) cell extract

Lane 2 : COS-7 (African green monkey kidney fibroblast-like cell line) cell extract with peptide

Predicted band size: 74 kDa

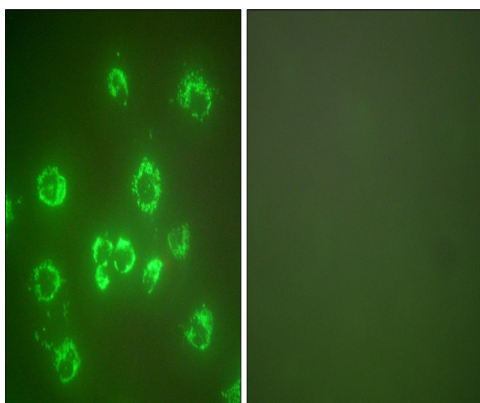
Observed band size: 74 kDa



Peptide - +

Immunohistochemistry (Formalin/PFA-fixed paraffin-embedded sections) - Anti-Grp75/MOT antibody (ab53098)

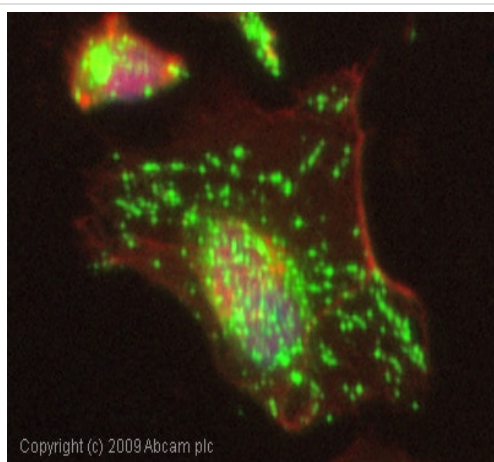
Immunohistochemical analysis of Grp75/MOT in paraffin-embedded human breast carcinoma tissue, using ab53098 at 1/50 dilution, in the presence (right) or absence (left) of peptide.



Peptide - +

Immunocytochemistry/ Immunofluorescence - Anti-Grp75/MOT antibody (ab53098)

Immunocytochemistry/ Immunofluorescence analysis of Grp75/MOT in COS-7 (African green monkey kidney fibroblast-like) cells, using ab53098 at 1/100 dilution, in the presence (right) or absence (left) of peptide.



Copyright (c) 2009 Abcam plc

Immunocytochemistry/ Immunofluorescence - Anti-Grp75/MOT antibody (ab53098)

ICC/IF image of ab53098 stained HeLa cells. The cells were 4% PFA fixed (10 min) and then incubated in 1%BSA / 10% normal goat serum / 0.3M glycine in 0.1% PBS-Tween for 1h to permeabilise the cells and block non-specific protein-protein interactions. The cells were then incubated with the antibody (ab53098, 1µg/ml) overnight at +4°C. The secondary antibody (green) was Alexa Fluor® 488 goat anti-rabbit IgG (H+L) used at a 1/1000 dilution for 1h. Alexa Fluor® 594 WGA was used to label plasma membranes (red) at a 1/200 dilution for 1h. DAPI was used to stain the cell nuclei (blue) at a concentration of 1.43µM.

Please note: All products are "FOR RESEARCH USE ONLY. NOT FOR USE IN DIAGNOSTIC PROCEDURES"

Our Abpromise to you: Quality guaranteed and expert technical support

- Replacement or refund for products not performing as stated on the datasheet
- Valid for 12 months from date of delivery
- Response to your inquiry within 24 hours

- We provide support in Chinese, English, French, German, Japanese and Spanish
- Extensive multi-media technical resources to help you
- We investigate all quality concerns to ensure our products perform to the highest standards

If the product does not perform as described on this datasheet, we will offer a refund or replacement. For full details of the Abpromise, please visit <https://www.abcam.co.jp/abpromise> or contact our technical team.

Terms and conditions

- Guarantee only valid for products bought direct from Abcam or one of our authorized distributors