


Anti-GRLF1 antibody ab85950

★★★★★ **1 Abreviews** **画像数 3**

製品の概要

製品名	Anti-GRLF1 antibody
製品の詳細	Rabbit polyclonal to GRLF1
由来種	Rabbit
アプリケーション	適用あり: WB, IP
種交差性	交差種: Mouse, Human 交差が予測される動物種: Rat, Horse, Guinea pig, Cow, Dog, Pig, Chimpanzee, Ferret, Rhesus monkey, Gorilla, Orangutan 
免疫原	Synthetic peptide corresponding to Human GRLF1 aa 1200-1300. Database link: Q9NRY4
ポジティブ・コントロール	WB: HeLa, 293T, CT26-WT, 4T1 and Renca whole cell lysates. IP: HeLa whole cell lysate.
特記事項	<p>The Life Science industry has been in the grips of a reproducibility crisis for a number of years. Abcam is leading the way in addressing this with our range of recombinant monoclonal antibodies and knockout edited cell lines for gold-standard validation. Please check that this product meets your needs before purchasing.</p> <p>If you have any questions, special requirements or concerns, please send us an inquiry and/or contact our Support team ahead of purchase. Recommended alternatives for this product can be found below, along with publications, customer reviews and Q&As</p>

製品の特性

製品の状態	Liquid
保存方法	Shipped at 4°C. Upon delivery aliquot and store at -20°C. Avoid freeze / thaw cycles.
バッファー	pH: 6.8 Preservative: 0.09% Sodium azide Constituents: Tris buffered saline, 0.1% BSA
精製度	Immunogen affinity purified
特記事項 (精製)	ab85950 was affinity purified using an epitope specific to GRLF1 immobilized on solid support.
ポリ/モノ	ポリクローナル
アイソタイプ	IgG

アプリケーション

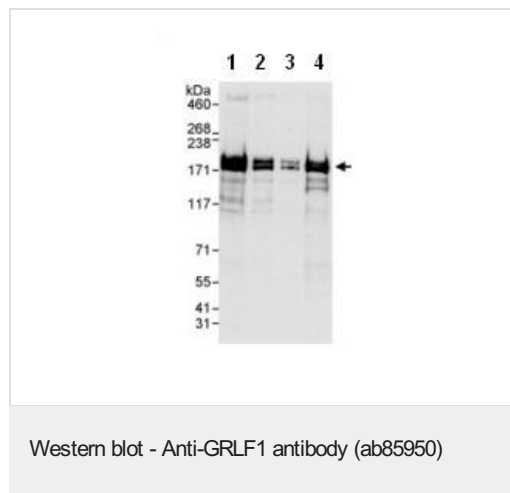
The Abpromise guarantee Abpromise保証は、 次のテスト済みアプリケーションにおけるab85950の使用に適用されます
アプリケーションノートには、推奨の開始希釈率がありますが、適切な希釈率につきましてはご検討ください。

アプリケーション	Abreviews	特記事項
WB	★★★★☆ (1)	1/2000 - 1/10000. Predicted molecular weight: 172 kDa.
IP		Use at 2-5 µg/mg of lysate.

ターゲット情報

機能	Represses transcription of the glucocorticoid receptor by binding to the cis-acting regulatory sequence 5'-GAGAAAAGAACTGGAGAACTC-3'. May participate in the regulation of retinal development and degeneration. May transduce signals from p21-ras to the nucleus, acting via the ras GTPase-activating protein (GAP). May also act as a tumor suppressor.
配列類似性	Contains 4 FF domains. Contains 1 Rho-GAP domain.
翻訳後修飾	Tyrosine phosphorylated. Phosphorylated upon DNA damage, probably by ATM or ATR.
細胞内局在	Cytoplasm. Nucleus.

画像



All lanes : Anti-GRLF1 antibody (ab85950) at 0.04 µg/ml

Lane 1 : HeLa whole cell lysate at 50 µg

Lane 2 : HeLa whole cell lysate at 15 µg

Lane 3 : HeLa whole cell lysate at 5 µg

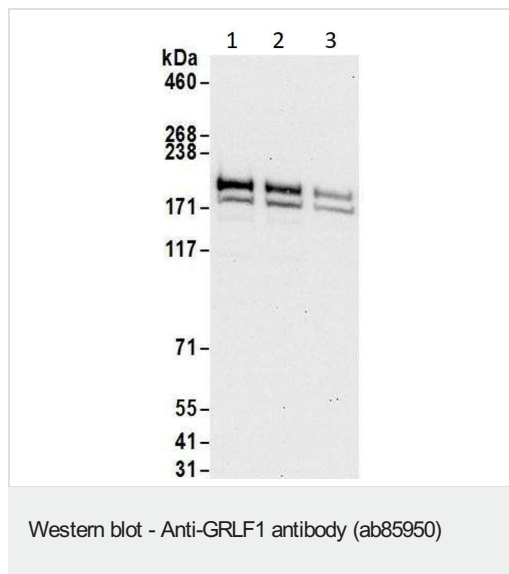
Lane 4 : 293T whole cell lysate at 50 µg

Developed using the ECL technique.

Predicted band size: 172 kDa

Observed band size: 172 kDa

Exposure time: 10 seconds



All lanes : Anti-GRLF1 antibody (ab85950) at 1/2000 dilution

Lane 1 : CT26-WT (Mouse colon carcinoma cell - Wild Type) whole cell lysate

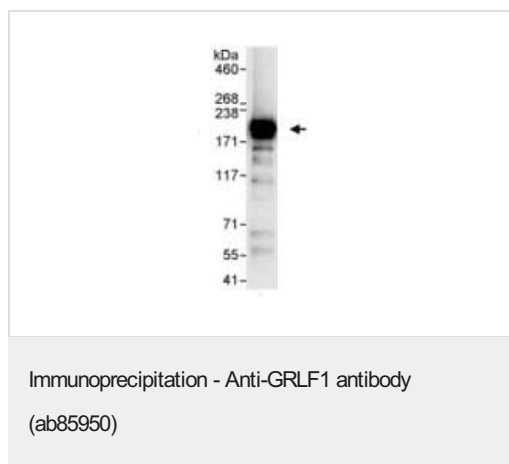
Lane 2 : 4T1 (Mouse mammary gland cells) whole cell lysate

Lane 3 : Renca (Mouse renal carcinoma cells) whole cell lysate

Lysates/proteins at 50 µg per lane.

Predicted band size: 172 kDa

Exposure time: 30 seconds



Detection of human GRLF1 in Immunoprecipitates of whole cell lysate from HeLa cells (1 mg for IP, 20% of IP loaded) using ab85950 at 3 µg/mg lysate for IP, and at 1 µg/ml for subsequent Western blot.

Detection: Chemiluminescence with an exposure time of 3 seconds.

Please note: All products are "FOR RESEARCH USE ONLY. NOT FOR USE IN DIAGNOSTIC PROCEDURES"

Our Abpromise to you: Quality guaranteed and expert technical support

- Replacement or refund for products not performing as stated on the datasheet
- Valid for 12 months from date of delivery
- Response to your inquiry within 24 hours
- We provide support in Chinese, English, French, German, Japanese and Spanish
- Extensive multi-media technical resources to help you
- We investigate all quality concerns to ensure our products perform to the highest standards

If the product does not perform as described on this datasheet, we will offer a refund or replacement. For full details of the Abpromise, please visit <https://www.abcam.co.jp/abpromise> or contact our technical team.

Terms and conditions

- Guarantee only valid for products bought direct from Abcam or one of our authorized distributors