


Anti-GRK6 antibody [EPR2046(2)] ab109302

リコンビナント RabMAb

2 References [画像数 2](#)

製品の概要

製品名	Anti-GRK6 antibody [EPR2046(2)]
製品の詳細	Rabbit monoclonal [EPR2046(2)] to GRK6
由来種	Rabbit
アプリケーション	適用あり: WB 適用なし: Flow Cyt, IHC-P or IP
種交差性	交差種: Human 交差が予測される動物種: Mouse 
免疫原	Synthetic peptide. This information is proprietary to Abcam and/or its suppliers.
ポジティブ・コントロール	U937 cell lysate, Ramos cell lysate, Jurkat cell lysate, K562 cell lysate.
特記事項	<p>This product is a recombinant monoclonal antibody, which offers several advantages including:</p> <ul style="list-style-type: none">- High batch-to-batch consistency and reproducibility- Improved sensitivity and specificity- Long-term security of supply- Animal-free production <p>For more information see here.</p> <p>Our RabMAb[®] technology is a patented hybridoma-based technology for making rabbit monoclonal antibodies. For details on our patents, please refer to RabMAb[®] patents.</p> <p>Rat: We have preliminary internal testing data to indicate this antibody may not react with this species. Please contact us for more information.</p>

製品の特性

製品の状態	Liquid
保存方法	Shipped at 4°C. Store at -20°C. Stable for 12 months at -20°C.
バッファー	pH: 7.20 Preservative: 0.05% Sodium azide Constituents: 0.1% BSA, 40% Glycerol (glycerin, glycerine), 9.85% Tris glycine, 50% Tissue culture supernatant
精製度	Protein A purified

ポリ/モノ	モノクローナル
クローン名	EPR2046(2)
アイソタイプ	IgG

アプリケーション

The Abpromise guarantee **Abpromise保証は、次のテスト済みアプリケーションにおけるab109302の使用に適用されます**
 アプリケーションノートには、推奨の開始希釈率がありますが、適切な希釈率につきましてはご検討ください。

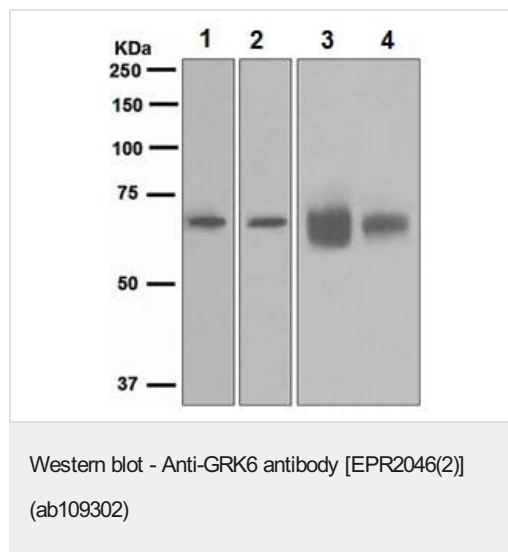
アプリケーション	Abreviews	特記事項
WB		1/1000 - 1/10000. Predicted molecular weight: 66 kDa.

追加情報 Is unsuitable for Flow Cyt, IHC-P or IP.

ターゲット情報

機能	Specifically phosphorylates the activated forms of G protein-coupled receptors.
組織特異性	Widely expressed.
配列類似性	Belongs to the protein kinase superfamily. AGC Ser/Thr protein kinase family. GPRK subfamily. Contains 1 AGC-kinase C-terminal domain. Contains 1 protein kinase domain. Contains 1 RGS domain.
翻訳後修飾	It is uncertain whether palmitoylation is on Cys-561 and/or Cys-562 and/or Cys-565.
細胞内局在	Membrane.
製品の状態	There are 2 isoforms produced by alternative splicing.

画像




All lanes : Anti-GRK6 antibody [EPR2046(2)] (ab109302) at 1/1000 dilution

- Lane 1** : U937 cell lysate
- Lane 2** : Ramos cell lysate
- Lane 3** : Jurkat cell lysate
- Lane 4** : K562 cell lysate

Lysates/proteins at 10 µg per lane.

Predicted band size: 66 kDa

Why choose a recombinant antibody?



- Research with confidence**
Consistent and reproducible results
- Long-term and scalable supply**
Recombinant technology
- Success from the first experiment**
Confirmed specificity
- Ethical standards compliant**
Animal-free production

Anti-GRK6 antibody [EPR2046(2)] (ab109302)

Please note: All products are "FOR RESEARCH USE ONLY. NOT FOR USE IN DIAGNOSTIC PROCEDURES"

Our Abpromise to you: Quality guaranteed and expert technical support

- Replacement or refund for products not performing as stated on the datasheet
- Valid for 12 months from date of delivery
- Response to your inquiry within 24 hours
- We provide support in Chinese, English, French, German, Japanese and Spanish
- Extensive multi-media technical resources to help you
- We investigate all quality concerns to ensure our products perform to the highest standards

If the product does not perform as described on this datasheet, we will offer a refund or replacement. For full details of the Abpromise, please visit <https://www.abcam.co.jp/abpromise> or contact our technical team.

Terms and conditions

- Guarantee only valid for products bought direct from Abcam or one of our authorized distributors