

Anti-GRK5 antibody ab64943

★★★★★ [3 Abreviews](#) [5 References](#) [画像数 3](#)

製品の概要

製品名	Anti-GRK5 antibody
製品の詳細	Rabbit polyclonal to GRK5
由来種	Rabbit
アプリケーション	適用あり: ELISA, IHC-Fr, WB, ICC/IF, IHC-P
種交差性	交差種: Mouse, Rat, Human
免疫原	Synthetic peptide from internal of human GRK5.
特記事項	<p>The Life Science industry has been in the grips of a reproducibility crisis for a number of years. Abcam is leading the way in addressing this with our range of recombinant monoclonal antibodies and knockout edited cell lines for gold-standard validation. Please check that this product meets your needs before purchasing.</p> <p>If you have any questions, special requirements or concerns, please send us an inquiry and/or contact our Support team ahead of purchase. Recommended alternatives for this product can be found below, along with publications, customer reviews and Q&As</p>

製品の特性

製品の状態	Liquid
保存方法	Shipped at 4°C. Store at -20°C. Stable for 12 months at -20°C.
バッファー	<p>pH: 7.40</p> <p>Preservative: 0.02% Sodium azide</p> <p>Constituents: PBS, 50% Glycerol (glycerin, glycerine), 0.87% Sodium chloride</p>
精製度	Without Mg ²⁺ and Ca ²⁺
ポリ/モノ	Immunogen affinity purified
アイソタイプ	ポリクローナル
	IgG

アプリケーション

The Abpromise guarantee

Abpromise保証は、次のテスト済みアプリケーションにおけるab64943の使用に適用されます

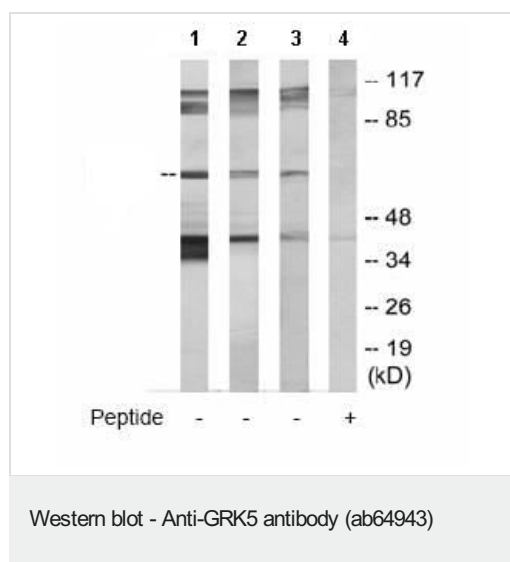
アプリケーションノートには、推奨の開始希釈率がありますが、適切な希釈率につきましてはご検討ください。

アプリケーション	Abreviews	特記事項
ELISA		Use at an assay dependent concentration.
IHC-Fr	★★★★★ (1)	Use at an assay dependent concentration.
WB	★★★★★ (2)	1/500 - 1/1000. Detects a band of approximately 68 kDa (predicted molecular weight: 68 kDa).
ICC/IF		Use a concentration of 1 µg/ml.
IHC-P		Use a concentration of 1 µg/ml. Perform heat mediated antigen retrieval with citrate buffer pH 6 before commencing with IHC staining protocol.

ターゲット情報

機能	Specifically phosphorylates the activated forms of G protein-coupled receptors.
組織特異性	Highest levels in heart, placenta, lung > skeletal muscle > brain, liver, pancreas > kidney.
配列類似性	Belongs to the protein kinase superfamily. AGC Ser/Thr protein kinase family. GPRK subfamily. Contains 1 AGC-kinase C-terminal domain. Contains 1 protein kinase domain. Contains 1 RGS domain.

画像



All lanes : Anti-GRK5 antibody (ab64943) at 1/500 dilution

Lane 1 : HUVEC extract

Lane 2 : HepG2 cell extract

Lane 3 : HeLa cell extract

Lane 4 : HeLa cell extract with immunising peptide

Predicted band size: 68 kDa

Observed band size: 68 kDa

Additional bands at: 100 kDa (possible non-specific binding), 40 kDa (possible non-specific binding)

Immunocytochemistry/ Immunofluorescence - Anti-GRK5 antibody (ab64943)

ICC/IF image of ab64943 stained HeLa cells. The cells were 4% PFA fixed (10 min) and then incubated in 1%BSA / 10% normal goat serum / 0.3M glycine in 0.1% PBS-Tween for 1h to permeabilise the cells and block non-specific protein-protein

interactions. The cells were then incubated with the antibody (ab64943, 1 µg/ml) overnight at +4°C. The secondary antibody (green) was Alexa Fluor® 488 goat anti-rabbit IgG (H+L) used at a 1/1000 dilution for 1h. Alexa Fluor® 594 WGA was used to label plasma membranes (red) at a 1/200 dilution for 1h. DAPI was used to stain the cell nuclei (blue) at a concentration of 1.43 µM.

Immunohistochemistry (Formalin/PFA-fixed paraffin-embedded sections) - Anti-GRK5 antibody (ab64943)

IHC image of ab64943 staining in human breast carcinoma formalin fixed paraffin embedded tissue section, performed on a Leica Bond™ system using the standard protocol F. The section was pre-treated using heat mediated antigen retrieval with sodium citrate buffer (pH6, epitope retrieval solution 1) for 20 mins. The section was then incubated with ab64943, 1 µg/ml, for 15 mins at room temperature and detected using an HRP conjugated compact polymer system. DAB was used as the chromogen. The section was then counterstained with haematoxylin and mounted with DPX.

For other IHC staining systems (automated and non-automated) customers should optimize variable parameters such as antigen retrieval conditions, primary antibody concentration and antibody incubation times.

Please note: All products are "FOR RESEARCH USE ONLY. NOT FOR USE IN DIAGNOSTIC PROCEDURES"

Our Abpromise to you: Quality guaranteed and expert technical support

- Replacement or refund for products not performing as stated on the datasheet
- Valid for 12 months from date of delivery
- Response to your inquiry within 24 hours
- We provide support in Chinese, English, French, German, Japanese and Spanish
- Extensive multi-media technical resources to help you
- We investigate all quality concerns to ensure our products perform to the highest standards

If the product does not perform as described on this datasheet, we will offer a refund or replacement. For full details of the Abpromise, please visit <https://www.abcam.co.jp/abpromise> or contact our technical team.

Terms and conditions

- Guarantee only valid for products bought direct from Abcam or one of our authorized distributors