

Anti-GRIN1 antibody ab74577

画像数 1

製品の概要

製品名	Anti-GRIN1 antibody
製品の詳細	Rabbit polyclonal to GRIN1
由来種	Rabbit
アプリケーション	適用あり: WB
種交差性	交差種: Human
免疫原	Synthetic peptide corresponding to Human GRIN1 (internal sequence).
ポジティブ・コントロール	WB: HT29 cell extracts.
特記事項	<p>The Life Science industry has been in the grips of a reproducibility crisis for a number of years. Abcam is leading the way in addressing this with our range of recombinant monoclonal antibodies and knockout edited cell lines for gold-standard validation. Please check that this product meets your needs before purchasing.</p> <p>If you have any questions, special requirements or concerns, please send us an inquiry and/or contact our Support team ahead of purchase. Recommended alternatives for this product can be found below, along with publications, customer reviews and Q&As</p>

製品の特性

製品の状態	Liquid
保存方法	Shipped at 4°C. Upon delivery aliquot and store at -20°C. Avoid freeze / thaw cycles.
バッファー	pH: 7.40 Preservative: 0.02% Sodium azide Constituents: 50% Glycerol (glycerin, glycerine), 0.87% Sodium chloride, PBS
精製度	Without Mg ²⁺ and Ca ²⁺ Immunogen affinity purified
特記事項 (精製)	ab74577 was affinity purified from rabbit antiserum by affinity chromatography using epitope specific immunogen.
ポリクローナル	ポリクローナル
アイソタイプ	IgG

アプリケーション

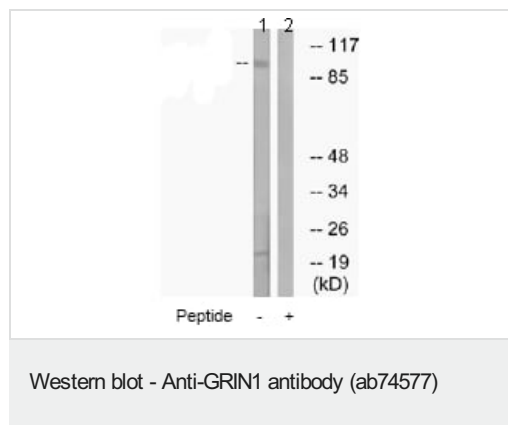
The Abpromise guarantee Abpromise保証は、次のテスト済みアプリケーションにおけるab74577の使用に適用されず
アプリケーションノートには、推奨の開始希釈率がありますが、適切な希釈率につきましてはご検討ください。

アプリケーション	Abreviews	特記事項
WB		1/500 - 1/1000. Predicted molecular weight: 102 kDa.

ターゲット情報

機能	May be involved in neurite outgrowth.
組織特異性	Widely expressed in the central nervous system, with highest levels in spinal cord.
翻訳後修飾	Palmitoylation on Cys-999 and/or Cys-1000 is required for membrane targeting.
細胞内局在	Cell membrane. Cell projection, growth cone. Highly enriched in growth cone.

画像



All lanes : Anti-GRIN1 antibody (ab74577) at 1/500 dilution

Lane 1 : HT29 cell extracts

Lane 2 : HT29 cell extracts with immunising peptide at 10 µg

Lysates/proteins at 10 µg per lane.

Predicted band size: 102 kDa

Observed band size: 102 kDa

Additional bands at: 20 kDa. We are unsure as to the identity of these extra bands.

Please note: All products are "FOR RESEARCH USE ONLY. NOT FOR USE IN DIAGNOSTIC PROCEDURES"

Our Abpromise to you: Quality guaranteed and expert technical support

- Replacement or refund for products not performing as stated on the datasheet
- Valid for 12 months from date of delivery
- Response to your inquiry within 24 hours
- We provide support in Chinese, English, French, German, Japanese and Spanish
- Extensive multi-media technical resources to help you
- We investigate all quality concerns to ensure our products perform to the highest standards

If the product does not perform as described on this datasheet, we will offer a refund or replacement. For full details of the Abpromise,

please visit <https://www.abcam.co.jp/abpromise> or contact our technical team.

Terms and conditions

- Guarantee only valid for products bought direct from Abcam or one of our authorized distributors